



International Office

Everest Biotech Ltd

Vector Laboratories, Inc.
6737 Mowry Ave
Newark, CA 94560
United States

Customer Service:

customerservice@vectorlabs.com

Technical Service:

technical@vectorlabs.com

Tel: +1 (800) 227-6666

www.everestbiotech.com

**Research Use Only. Not for
diagnostic or therapeutic use.**

EB09687 - Goat Anti-MXRA5 Antibody

Size: 100µg specific antibody in 200µl



Target Protein

Principal Names: MXRA5, matrix-remodelling associated 5, DKFZp564I1922, OTTHUMP00000022860, adhesion protein with leucine-rich repeats and Immunoglobulin domains related to perlecan, adlcan

Official Symbol: MXRA5

Accession Number(s): NP_056234.2

Human GeneID(s): [25878](#)

Immunogen

Peptide with sequence C-QAETTTLDQDHLET, from the internal region of the protein sequence according to NP_056234.2.

Please note the [peptide](#) is available for sale.

Purification and Storage

Purified from goat serum by ammonium sulphate precipitation followed by antigen affinity chromatography using the immunizing peptide.

Supplied at 0.5 mg/ml in Tris saline, 0.02% sodium azide, pH7.3 with 0.5% bovine serum albumin.

Aliquot and store at -20°C. Minimize freezing and thawing.

Applications Tested

Peptide ELISA: antibody detection limit dilution 1:16000.

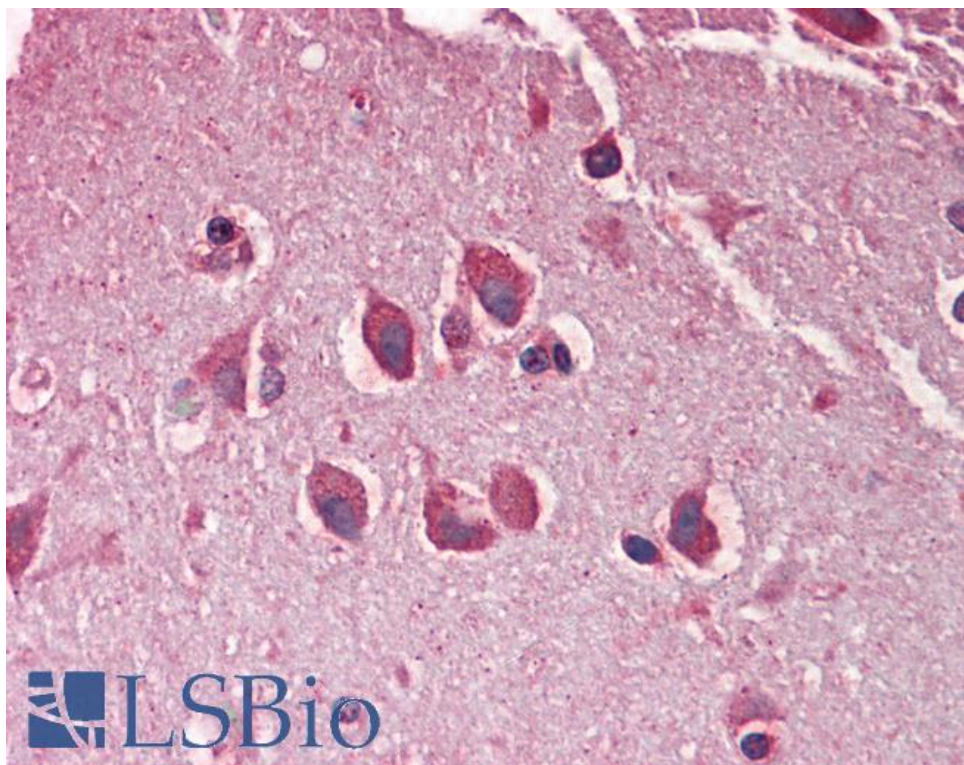
Western blot: Preliminary experiments in Human Brain (Hippocampus) and Skeletal Muscle lysates gave no specific signal but low background (at antibody concentration up to 1µg/ml).

IHC: Paraffin embedded Human Brain (Cortex). Recommended concentration: 5µg/ml.

Species Reactivity

Tested: Human

Expected from sequence similarity: Human



EB09687 (5µg/ml) staining of paraffin embedded Human Cortex. Steamed antigen retrieval with citrate buffer pH 6, AP-staining.