



International Office

Everest Biotech Ltd

Vector Laboratories, Inc.
6737 Mowry Ave
Newark, CA 94560
United States

Customer Service:

customerservice@vectorlabs.com

Technical Service:

technical@vectorlabs.com

Tel: +1 (800) 227-6666

www.everestbiotech.com

**Research Use Only. Not for
diagnostic or therapeutic use.**

EB07870 - Goat Anti-c-Myb (aa281-294) Antibody

Size: 100µg specific antibody in 200µl



Target Protein

Principal Names: c-myb, MYB, v-myb myeloblastosis viral oncogene homolog (avian), c-myb_CDS, efg, Avian myeloblastosis viral (v-myb) oncogene homolog, c-myb protein (140 AA), c-myb10A_CDS, c-myb13A_CDS, c-myb14A_CDS, c-myb8B_CDS, v-myb avian myeloblastosis viral oncogene homolog, v-myb myeloblastosis viral oncogene homolog

Official Symbol: MYB

Accession Number(s): NP_001123645.1; NP_005366.2; NP_001123644.1; NP_001155128.1; NP_001155129.1; NP_001155130.1; NP_001155131.1

Human GeneID(s): [4602](#)

Non-Human GeneID(s): 17863 (mouse)

Important Comments: This antibody is expected to recognize isoforms 1-7 only (Numbering from NCBI RefSeq). (NP_001123645.1; NP_005366.2; NP_001123644.1; NP_001155128.1; NP_001155129.1; NP_001155130.1; NP_001155131.1)

Immunogen

Peptide with sequence C-QRHYNDEDPEKEKR, from the internal region of the protein sequence according to NP_001123645.1; NP_005366.2; NP_001123644.1; NP_001155128.1; NP_001155129.1; NP_001155130.1; NP_001155131.1.

Please note the [peptide](#) is available for sale.

Purification and Storage

Purified from goat serum by ammonium sulphate precipitation followed by antigen affinity chromatography using the immunizing peptide.

Supplied at 0.5 mg/ml in Tris saline, 0.02% sodium azide, pH7.3 with 0.5% bovine serum albumin.

Aliquot and store at -20°C. Minimize freezing and thawing.

Applications Tested

Peptide ELISA: antibody detection limit dilution 1:4000.

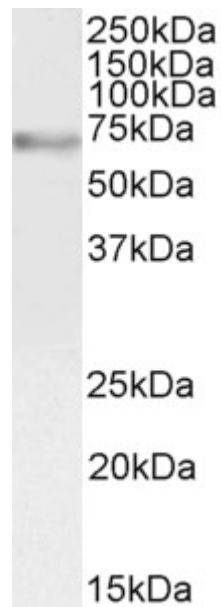
Western blot: Approx 70kDa band observed in lysates of cell line MOLT4 and in preliminary testing of Human Bone Marrow and Lymph Node lysate (calculated MW of 72.3kDa according to NP_005366.2). Recommended concentration: 1-3µg/ml.

IHC: Paraffin embedded Human Kidney. Recommended concentration: 4µg/ml.

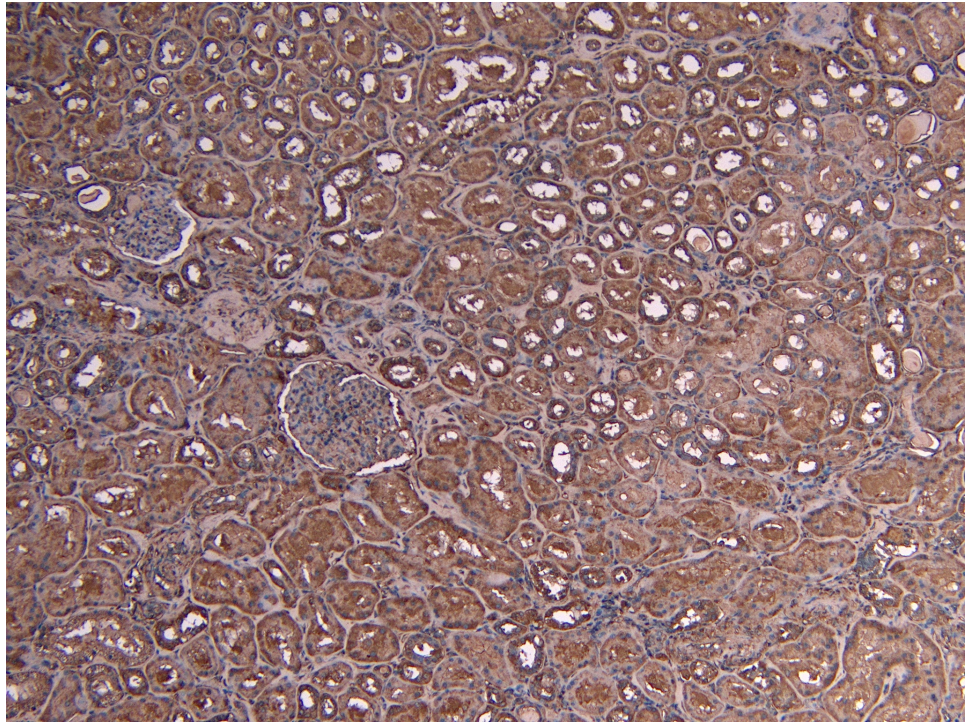
Species Reactivity

Tested: Human

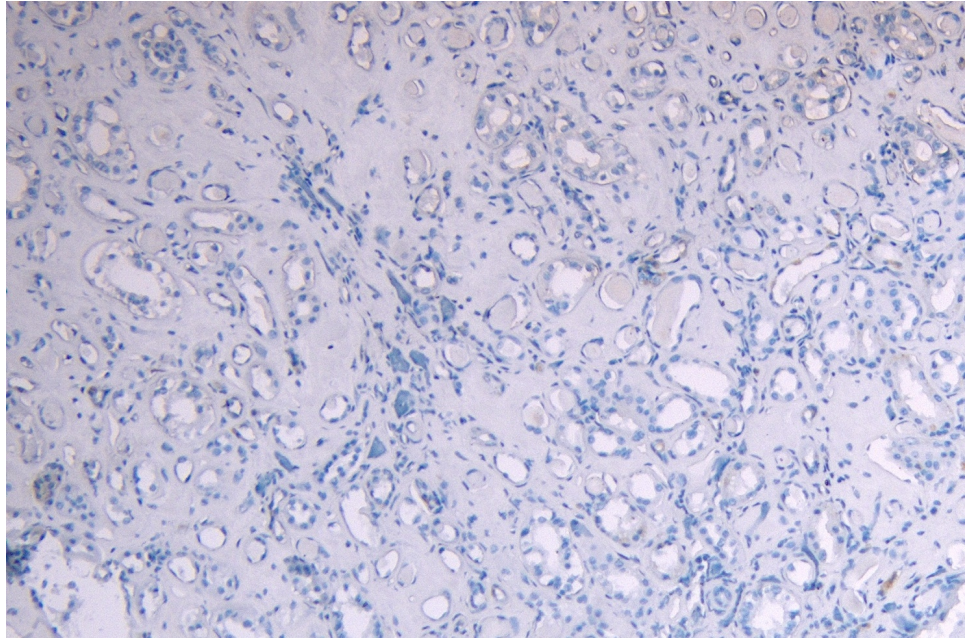
Expected from sequence similarity: Human, Mouse, Rat, Dog



EB07870 (2 μ g/ml) staining of MOLT4 cell lysate (35 μ g protein in RIPA buffer). Detected by chemiluminescence.



EB07870 (4 μ g/ml) staining of paraffin embedded Human Kidney. Heat induced antigen retrieval with citrate buffer pH 6, HRP-staining.



EB07870 Negative Control showing staining of paraffin embedded Human Kidney, with no primary antibody.