



## UK Office

### Everest Biotech Ltd

Cherwell Innovation Centre  
77 Heyford Park  
Upper Heyford  
Oxfordshire  
OX25 5HD  
UK

Enquiries:

[info@everestbiotech.com](mailto:info@everestbiotech.com)

Sales:

[sales@everestbiotech.com](mailto:sales@everestbiotech.com)

Tech support:

[support@everestbiotech.com](mailto:support@everestbiotech.com)

Tel: +44 (0)1869 238326

[www.everestbiotech.com](http://www.everestbiotech.com)

**Research Use Only. Not for  
diagnostic or therapeutic use.**

## EB08504 - Goat Anti-MYF5 Antibody

Size: 100µg specific antibody in 200µl



### Target Protein

**Principal Names:** MYF5, myogenic factor 5

**Official Symbol:** MYF5

**Accession Number(s):** NP\_005584.1

**Human GeneID(s):** [4617](#)

### Immunogen

Peptide with sequence PECNSPVWSRKSST, from the internal region of the protein sequence according to NP\_005584.1.

Please note the [peptide](#) is available for sale.

### Purification and Storage

Purified from goat serum by ammonium sulphate precipitation followed by antigen affinity chromatography using the immunizing peptide.

Supplied at 0.5 mg/ml in Tris saline, 0.02% sodium azide, pH7.3 with 0.5% bovine serum albumin.

Aliquot and store at -20°C. Minimize freezing and thawing.

### Applications Tested

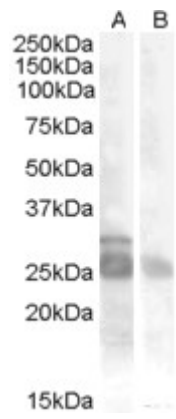
**Peptide ELISA:** antibody detection limit dilution 1:32000.

**Western blot:** Approx 28kDa band observed in Human Skeletal Muscle lysates (calculated MW of 28.4kDa according to NP\_005584.1). Recommended concentration: 0.5-1.5µg/ml. An additional band of 26kDa was consistently observed, however this band was not blocked by the immunizing peptide and it is therefore a non-specific signal. We call for caution when used for other assays than Western blot.

### Species Reactivity

**Tested:** Human

**Expected from sequence similarity:** Human



EB08504 (0.5µg/ml) staining of Muscle lysate (35µg protein in RIPA buffer) with (B) and without (A) blocking with the immunising peptide. Primary incubation was 1 hour. Detected by chemiluminescence.