



International Office

Everest Biotech Ltd

Vector Laboratories, Inc.
6737 Mowry Ave
Newark, CA 94560
United States

Customer Service:

customerservice@vectorlabs.com

Technical Service:

technical@vectorlabs.com

Tel: +1 (800) 227-6666

www.everestbiotech.com

**Research Use Only. Not for
diagnostic or therapeutic use.**

EB07865 - Goat Anti-MYLK Antibody

Size: 100µg specific antibody in 200µl



Target Protein

Principal Names: MYLK, myosin, light chain kinase, DKFZp686I10125, FLJ12216, KRP, MLCK, MLCK108, MLCK210, MSTP083, myosin light chain kinase, myosin, light polypeptide kinase

Official Symbol: MYLK

Accession Number(s): NP_444253.3; NP_444254.3 ; NP_444255.3; NP_444256.3

Human GeneID(s): [4638](#)

Important Comments: This antibody is expected to recognise all reported isoforms (NP_444253.3; NP_444254.3 ; NP_444255.3 and NP_444256.3).

Immunogen

Peptide with sequence C-KDTKNMEAKKLSKD, from the internal region of the protein sequence according to NP_444253.3; NP_444254.3 ; NP_444255.3; NP_444256.3.

Please note the [peptide](#) is available for sale.

Purification and Storage

Purified from goat serum by ammonium sulphate precipitation followed by antigen affinity chromatography using the immunizing peptide.

Supplied at 0.5 mg/ml in Tris saline, 0.02% sodium azide, pH7.3 with 0.5% bovine serum albumin.

Aliquot and store at -20°C. Minimize freezing and thawing.

Applications Tested

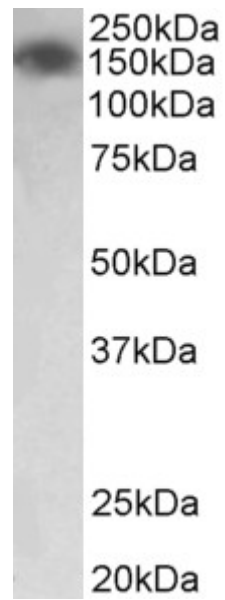
Peptide ELISA: antibody detection limit dilution 1:8000.

Western blot: Approx 150kDa band observed in Human Colon and Lung lysates (calculated MW of 197kDa according to NP_444256.3). Recommended concentration: 0.01-0.03µg/ml.

Species Reactivity

Tested: Human

Expected from sequence similarity: Human, Mouse,



EB07865 (0.03 μ g/ml) staining of Human Colon lysate (35 μ g protein in RIPA buffer). Primary incubation was 1 hour. Detected by chemiluminescence.