



International Office

Everest Biotech Ltd

Vector Laboratories, Inc.
6737 Mowry Ave
Newark, CA 94560
United States

Customer Service:

customerservice@vectorlabs.com

Technical Service:

technical@vectorlabs.com

Tel: +1 (800) 227-6666

www.everestbiotech.com

**Research Use Only. Not for
diagnostic or therapeutic use.**

EB10262 - Goat Anti-MYO5A Antibody

Size: 100µg specific antibody in 200µl



Target Protein

Principal Names: dilute, GS1, MYH12, MYO5, myosin V, myosin VA, myosin VA (heavy chain 12, myoxin), myosin, heavy polypeptide kinase, myoxin, MYR12, MYO5A

Official Symbol: MYO5A

Accession Number(s): NP_000250.3; NP_001135967.1

Human GeneID(s): [4644](#)

Non-Human GeneID(s): 17918 (mouse), 25017 (rat)

Important Comments: This antibody is expected to recognize both reported isoforms (NP_000250.3; NP_001135967.1).

Immunogen

Peptide with sequence C-ETKQLELDLN, from the internal region of the protein sequence according to NP_000250.3; NP_001135967.1.

Please note the [peptide](#) is available for sale.

Purification and Storage

Purified from goat serum by ammonium sulphate precipitation followed by antigen affinity chromatography using the immunizing peptide.

Supplied at 0.5 mg/ml in Tris saline, 0.02% sodium azide, pH7.3 with 0.5% bovine serum albumin.

Aliquot and store at -20°C. Minimize freezing and thawing.

Applications Tested

Peptide ELISA: antibody detection limit dilution 1:8000.

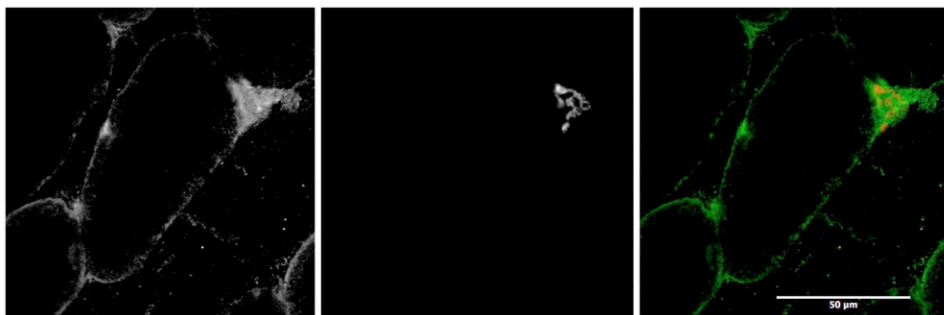
Western blot: Approx 200kDa band observed in lysates of cell line Jurkat (calculated MW of 215kDa according to NP_000250.3). Recommended concentration: 1-3µg/ml.

Immunofluorescence: Transverse sections of Mouse Skeletal Muscle shows staining of the fibre membrane and neuromuscular junction. The observed pattern corresponds to earlier findings in literature with different antibodies (Röder et al, Proc Natl Acad Sci U S A. 2010 Feb 2;107(5):2031-6; PMID: 20133847). Recommended concentration: 1-3µg/ml.

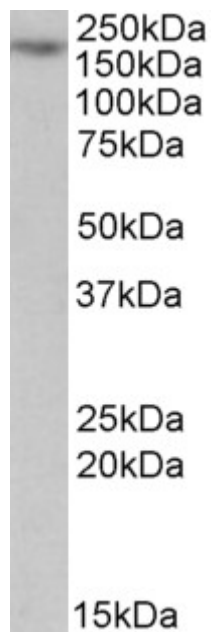
Species Reactivity

Tested: Human, Mouse

Expected from sequence similarity: Human, Mouse, Rat, Cow



EB10262 (1µg/ml) staining of Mouse Skeletal Muscle (first panel, and in green in third panel). Alpha-bungaratoxin staining in middle panel and in red in third panel. Detected by Fluorescence. Data kindly provided by Dr. Rüdiger Rudolf, Karlsruhe, Germany



EB10262 (1µg/ml) staining of Jurkat lysate (35µg protein in RIPA buffer). Primary incubation was 1 hour. Detected by chemiluminescence.