



## International Office

### Everest Biotech Ltd

Vector Laboratories, Inc.  
6737 Mowry Ave  
Newark, CA 94560  
United States

Customer Service:

[customerservice@vectorlabs.com](mailto:customerservice@vectorlabs.com)

Technical Service:

[technical@vectorlabs.com](mailto:technical@vectorlabs.com)

Tel: +1 (800) 227-6666

[www.everestbiotech.com](http://www.everestbiotech.com)

**Research Use Only. Not for  
diagnostic or therapeutic use.**

## EB09955 - Goat Anti-Myogenin / MYF4 Antibody

Size: 100µg specific antibody in 200µl



### Target Protein

**Principal Names:** bHLHc3, MYF4, myogenic factor 4, Myogenic factor-4, MYOGENIN, myogenin, myogenin, myogenin (myogenic factor 4), MYOG

**Official Symbol:** MYOG

**Accession Number(s):** NP\_002470.2

**Human GeneID(s):** [4656](#)

### Immunogen

Peptide with sequence C-TDAHNLHSLTSIVD, from the C Terminus (near) of the protein sequence according to NP\_002470.2.

Please note the [peptide](#) is available for sale.

### Purification and Storage

Purified from goat serum by ammonium sulphate precipitation followed by antigen affinity chromatography using the immunizing peptide.

Supplied at 0.5 mg/ml in Tris saline, 0.02% sodium azide, pH7.3 with 0.5% bovine serum albumin.

Aliquot and store at -20°C. Minimize freezing and thawing.

### Applications Tested

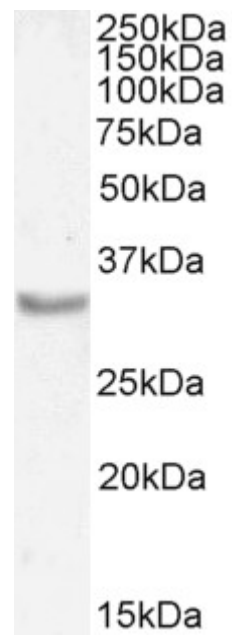
**Peptide ELISA:** antibody detection limit dilution 1:128000.

**Western blot:** Approx 35kDa band observed in Mouse Skeletal Muscle lysates (calculated MW of 25.2kDa according to Mouse NP\_112466.1). This molecular weight is routinely observed by other sources. Recommended concentration: 1-2µg/ml. Primary incubation 1 hour at room temperature.

### Species Reactivity

**Tested:** Mouse

**Expected from sequence similarity:** Human, Mouse, Rat, Dog, Cow, Pig



EB09955 (1 $\mu$ g/ml) staining of Mouse Skeletal Muscle lysate (35 $\mu$ g protein in RIPA buffer). Detected by chemiluminescence.