



## UK Office

### Everest Biotech Ltd

Cherwell Innovation Centre  
77 Heyford Park  
Upper Heyford  
Oxfordshire  
OX25 5HD  
UK

Enquiries:

[info@everestbiotech.com](mailto:info@everestbiotech.com)

Sales:

[sales@everestbiotech.com](mailto:sales@everestbiotech.com)

Tech support:

[support@everestbiotech.com](mailto:support@everestbiotech.com)

Tel: +44 (0)1869 238326

[www.everestbiotech.com](http://www.everestbiotech.com)

**Research Use Only. Not for  
diagnostic or therapeutic use.**

## EB11898 - Goat Anti-myotilin (aa209-221) Antibody

Size: 100µg specific antibody in 200µl

### Target Protein

**Principal Names:** MYOT, myotilin, LGMD1, LGMD1A, TTID, 57 kDa cytoskeletal protein, OTTHUMP00000159430, OTTHUMP00000223460, OTTHUMP00000223461, myofibrillar titin-like Ig domains protein, titin immunoglobulin domain protein (myotilin)

**Official Symbol:** MYOT

**Accession Number(s):** NP\_006781.1; NP\_001129412.1

**Human GeneID(s):** [9499](#)

**Important Comments:** This antibody is expected to recognize both reported isoforms (NP\_006781.1; NP\_001129412.1).

### Immunogen

Peptide with sequence C-DSQQHNSEHARLQ, from the internal region of the protein sequence according to NP\_006781.1; NP\_001129412.1.

Please note the [peptide](#) is available for sale.

### Purification and Storage

Purified from goat serum by ammonium sulphate precipitation followed by antigen affinity chromatography using the immunizing peptide.

Supplied at 0.5 mg/ml in Tris saline, 0.02% sodium azide, pH7.3 with 0.5% bovine serum albumin.

Aliquot and store at -20°C. Minimize freezing and thawing.

### Applications Tested

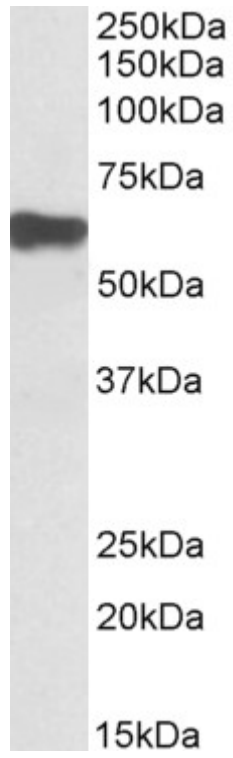
**Peptide ELISA:** antibody detection limit dilution 1:128000.

**Western blot:** Approx 60kDa band observed in Human Skeletal Muscle lysates (calculated MW of 55.4kDa according to NP\_006781.1. Recommended concentration: 0.1-0.3µg/ml.

### Species Reactivity

**Tested:** Human

**Expected from sequence similarity:** Human



EB11898 (0.1µg/ml) staining of Human Skeletal Muscle lysate (35µg protein in RIPA buffer). Primary incubation was 1 hour. Detected by chemiluminescence.