

## UK Office

### Everest Biotech Ltd

Cherwell Innovation Centre  
77 Heyford Park  
Upper Heyford  
Oxfordshire  
OX25 5HD  
UK

Enquiries:

[info@everestbiotech.com](mailto:info@everestbiotech.com)

Sales:

[sales@everestbiotech.com](mailto:sales@everestbiotech.com)

Tech support:

[support@everestbiotech.com](mailto:support@everestbiotech.com)

Tel: +44 (0)1869 238326

[www.everestbiotech.com](http://www.everestbiotech.com)

**Research Use Only. Not for  
diagnostic or therapeutic use.**

## EB11473 - Goat Anti-Nalp10 / Nlrp10 (mouse) Antibody

Size: 100µg specific antibody in 200µl



### Target Protein

**Principal Names:** 6430548I20Rik, NACHT, leucine rich repeat and PYD containing 10, NACHT, LRR and PYD containing protein 10, NACHT, LRR and PYD domains-containing protein 10, NACHT/LRR/pyrin domain-containing protein 10, Nalp10, Napl10, neuronal apoptosis inhibitor protein 10, NLR family, pyrin domain containing 10, Nlrp10, PAN5, Pynod

**Official Symbol:** Nlrp10

**Accession Number(s):** NP\_780741.1

**Non-Human GeneID(s):** 244202 (mouse), 293426 (rat)

### Immunogen

Peptide with sequence NDLEENSFKTLKFH-C, from the N Terminus of the protein sequence according to NP\_780741.1.

Please note the [peptide](#) is available for sale.

### Purification and Storage

Purified from goat serum by ammonium sulphate precipitation followed by antigen affinity chromatography using the immunizing peptide.

Supplied at 0.5 mg/ml in Tris saline, 0.02% sodium azide, pH7.3 with 0.5% bovine serum albumin.

Aliquot and store at -20°C. Minimize freezing and thawing.

### Applications Tested

**Peptide ELISA:** antibody detection limit dilution 1:128000.

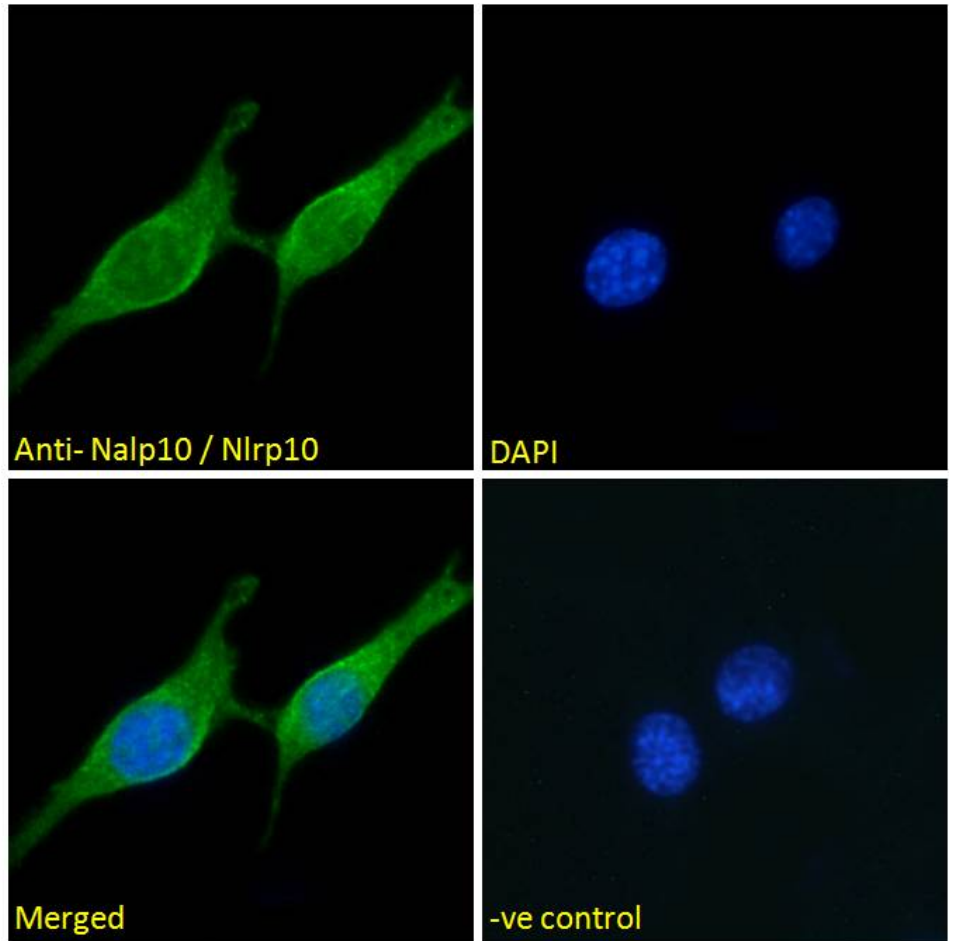
**Immunofluorescence:** Strong expression of the protein seen in the cytoplasm of NIH3T3 cells. Recommended concentration: 10µg/ml.

**Flow Cytometry:** Flow cytometric analysis of NIH3T3 cells. Recommended concentration: 10ug/ml.

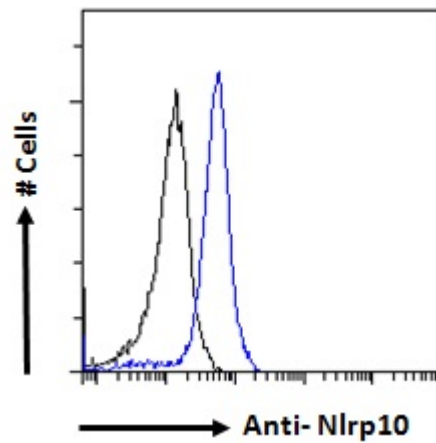
### Species Reactivity

**Tested:** Mouse

**Expected from sequence similarity:** Mouse, Rat



EB11473 Immunofluorescence analysis of paraformaldehyde fixed NIH3T3 cells, permeabilized with 0.15% Triton. Primary incubation 1hr (10ug/ml) followed by Alexa Fluor 488 secondary antibody (2ug/ml), showing cytoplasmic staining. The nuclear stain is DAPI (blue). Negative control: Unimmunized goat IgG (10ug/ml) followed by Alexa Fluor 488 secondary antibody (2ug/ml).



EB11473 Flow cytometric analysis of paraformaldehyde fixed NIH3T3 cells (blue line), permeabilized with 0.5% Triton. Primary incubation 1hr (10ug/ml) followed by Alexa Fluor 488 secondary antibody (1ug/ml). IgG control: Unimmunized goat IgG (black line) followed by Alexa Fluor 488 secondary antibody.