



UK Office

Everest Biotech Ltd

Cherwell Innovation Centre
77 Heyford Park
Upper Heyford
Oxfordshire
OX25 5HD
UK

Enquiries:

info@everestbiotech.com

Sales:

sales@everestbiotech.com

Tech support:

support@everestbiotech.com

Tel: +44 (0)1869 238326

www.everestbiotech.com

**Research Use Only. Not for
diagnostic or therapeutic use.**

EB11782 - Goat Anti-Nat8l (mouse aa211-223) Antibody

Size: 100µg specific antibody in 200µl



Target Protein

Principal Names: 1110038O08Rik, NAA synthetase, N-acetylaspartate synthetase, N-acetyltransferase 8-like, N-acetyltransferase 8-like protein, Nat8l, protein Shati, Shati

Official Symbol: Nat8l

Accession Number(s): NP_001001985.3

Human GeneID(s): [339983](#)

Non-Human GeneID(s): 269642 (mouse), 289727 (rat)

Immunogen

Peptide with sequence C-SVDSRFRGKGIK, from the internal region of the protein sequence according to NP_001001985.3.

Please note the [peptide](#) is available for sale.

Purification and Storage

Purified from goat serum by ammonium sulphate precipitation followed by antigen affinity chromatography using the immunizing peptide.

Supplied at 0.5 mg/ml in Tris saline, 0.02% sodium azide, pH7.3 with 0.5% bovine serum albumin.

Aliquot and store at -20°C. Minimize freezing and thawing.

Applications Tested

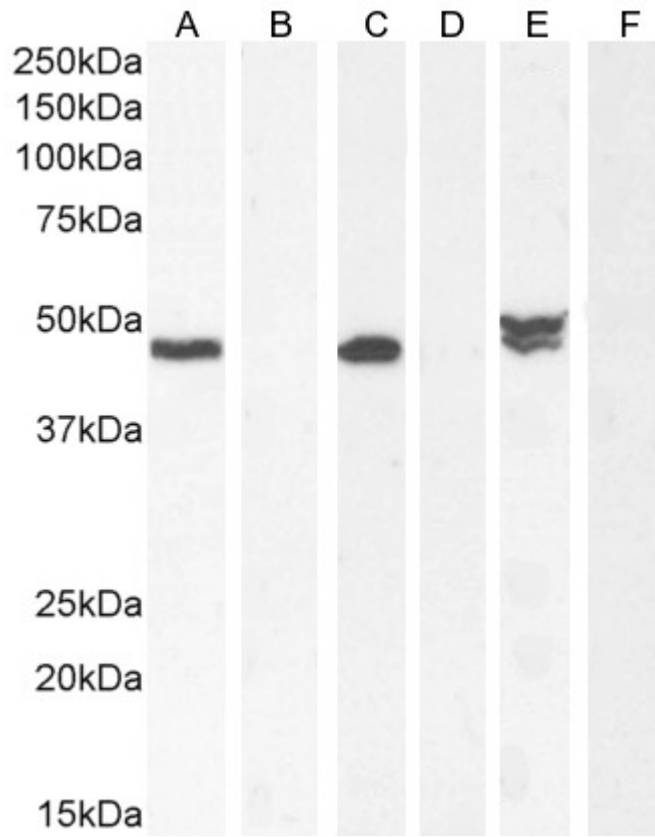
Peptide ELISA: antibody detection limit dilution 1:16000.

Western blot: Approx 45-48kDa band observed in Human Cerebellum and Mouse Brain lysates, and approx. 48-50kDa in Rat Brain lysates (calculated MW of 32.8kDa according to Human NP_848652.2 and 32.7kDa according to Mouse NP_001001985.3 and Rat NP_001178610.1). These bands were successfully blocked by incubation with the immunising peptide. and correspond to similar findings in literature with different antibodies (Becker et al, PMID: 20643647). Recommended concentration: 0.05-0.1µg/ml. Primary incubation 1 hour at room temperature.

Species Reactivity

Tested: Human, Mouse, Rat

Expected from sequence similarity: Human, Mouse, Rat, Dog, Cow



EB11782 (0.1 μ g/ml) staining of Human Cerebellum (A) + peptide (B), Mouse Brain (C) + peptide (D) and (0.05 μ g/ml) of Rat Brain (E) + peptide (F) lysate (35 μ g protein in RIPA buffer). Detected by chemiluminescence.