



UK Office

Everest Biotech Ltd

Cherwell Innovation Centre
77 Heyford Park
Upper Heyford
Oxfordshire
OX25 5HD
UK

Enquiries:

info@everestbiotech.com

Sales:

sales@everestbiotech.com

Tech support:

support@everestbiotech.com

Tel: +44 (0)1869 238326

Fax: +44 (0)1869 238327

US Office

Everest Biotech c/o Abcore

405 Maple Street, Suite A106
Ramona,
CA 92065
USA

Inquiries:

info@everestbiotech.com

Sales:

usasales@everestbiotech.com

Tech support:

support@everestbiotech.com

Tel: 888-320-4628 (toll-free)

Fax: 888-841-9041

www.everestbiotech.com

**Research Use Only. Not for
diagnostic or therapeutic use.**

EB05054-T - Goat Anti-NCF1 / p47phox Antibody - Trial

Size: 20µg specific antibody in 40µl



Target Protein

Principal Names: NCF1, p47phox, FLJ79451, NCF1A, NOXO2, SH3PXD1A, neutrophil cytosolic factor 1, Neutrophil cytosolic factor-1 (47kD), neutrophil cytosolic factor 1 (47kD, chronic granulomatous disease, autosomal 1), NADPH oxidase organizer 2

Official Symbol: NCF1

Accession Number(s): NP_000256.4

Human GeneID(s): [653361](#)

Non-Human GeneID(s): 17969 (mouse), 114553 (rat)

Immunogen

Peptide with sequence C-SESTKRKLASAV, from the C Terminus of the protein sequence according to NP_000256.4.

Please note the [peptide](#) is available for sale.

Purification and Storage

Purified from goat serum by ammonium sulphate precipitation followed by antigen affinity chromatography using the immunizing peptide.

Supplied at 0.5 mg/ml in Tris saline, 0.02% sodium azide, pH7.3 with 0.5% bovine serum albumin.

Aliquot and store at -20°C. Minimize freezing and thawing.

Applications Tested

Peptide ELISA: antibody detection limit dilution 1:20000.

Western blot: Approx 48kDa band observed in lysates of cell lines Daudi, U251 and U937 and in Mouse Thymus, and approx, 50kDa in Pig Spleen lysates (calculated MW of 44.7kDa according to Human NP_000256.4, 46.0kDa according to Mouse NP_001272966.1 and 45.3kDa according to Pig NP_001106691.1). This molecular weight is routinely observed by other sources. Recommended concentration: 0.01-1µg/ml.

Primary incubation 1 hour at room temperature. **Negative Control:** A431 cell lysate.

Preliminary testing was unsuccessful on Rat Spleen and Thymus for this particular batch.

IHC: Paraffin embedded Human Colon, Neutrophils. Recommended concentration: 5µg/ml.

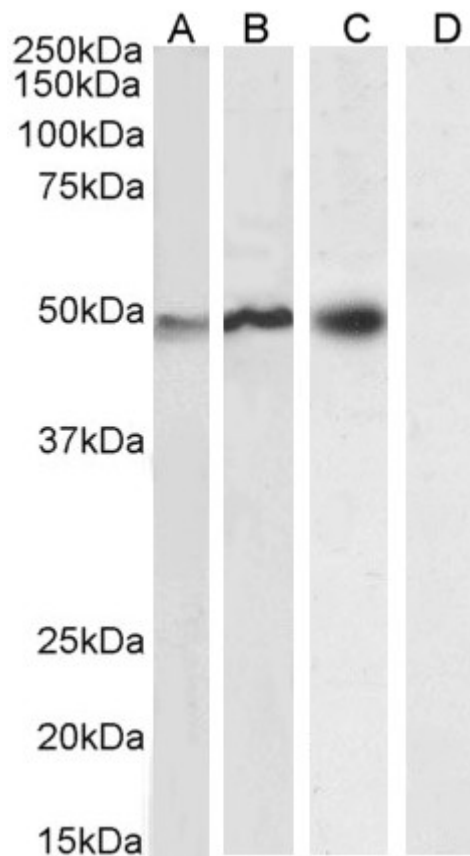
Immunofluorescence: Strong expression of the protein seen in the cytoplasm of HeLa cells. Recommended concentration: 10µg/ml.

Flow Cytometry: Flow cytometric analysis of HeLa cells. Recommended concentration: 10ug/ml.

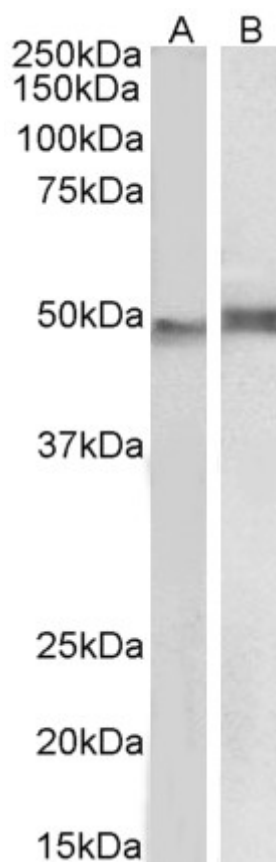
Species Reactivity

Tested: Human, Mouse, Pig

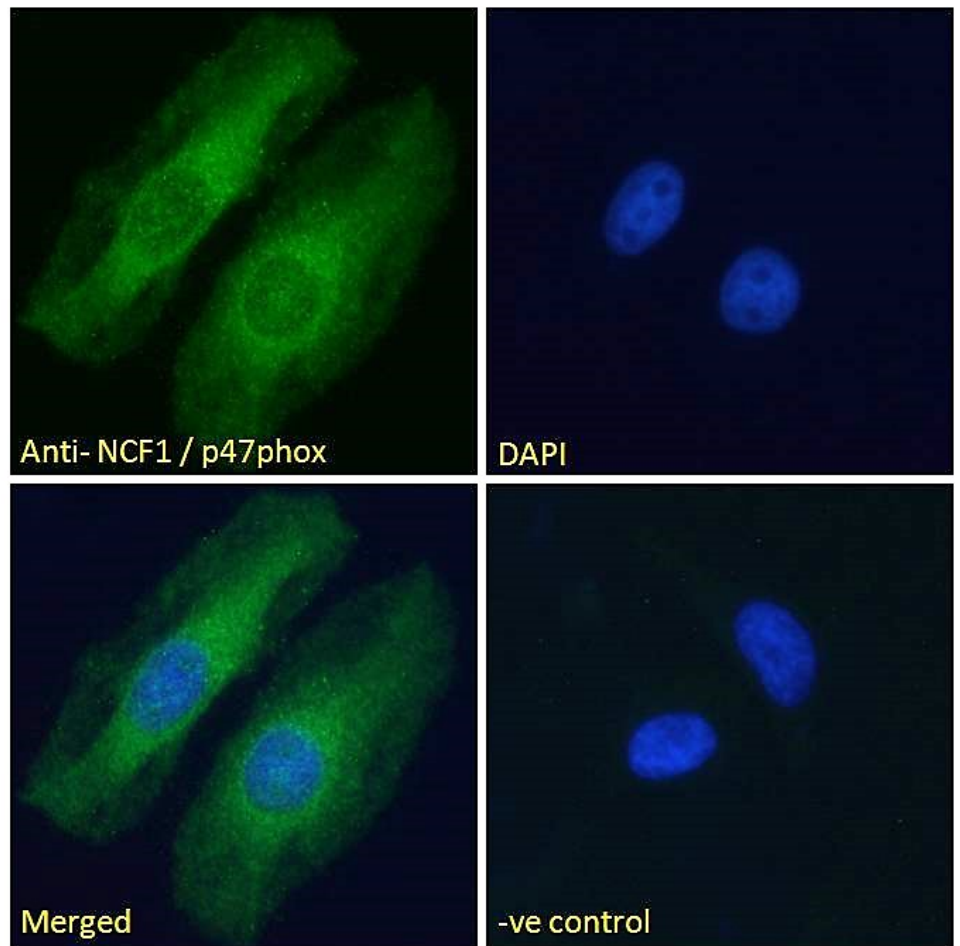
Expected from sequence similarity: Human, Mouse, Rat, Pig, Cow



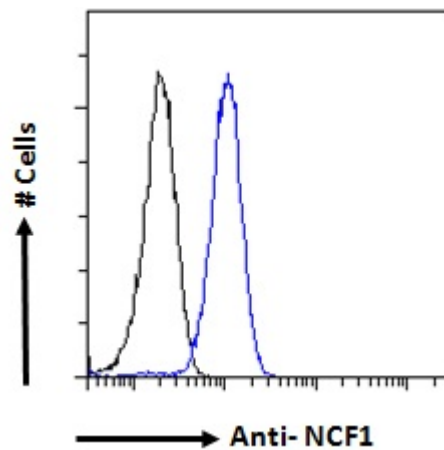
EB05054 (0.2 μ g/ml) staining of U937 (A), (0.01 μ g/ml) Daudi (B), (0.3 μ g/ml) U251 (C) and negative control A431 (D) cell lysate (35 μ g protein in RIPA buffer). Detected by chemiluminescence.



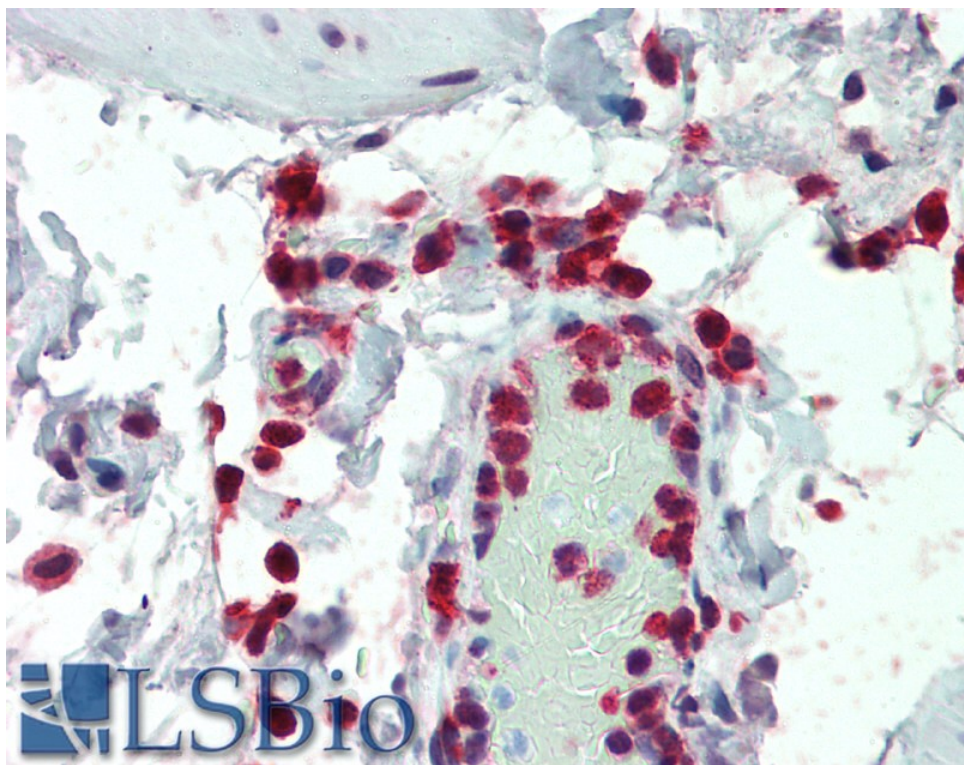
EB05054 (1 μ g/ml) staining of Mouse Thymus (A) and Pig Spleen (B) lysate (35 μ g protein in RIPA buffer). Detected by chemiluminescence.



EB05054 Immunofluorescence analysis of paraformaldehyde fixed HeLa cells, permeabilized with 0.15% Triton. Primary incubation 1hr (10ug/ml) followed by Alexa Fluor 488 secondary antibody (2ug/ml), showing cytoplasmic staining. The nuclear stain is DAPI (blue). Negative control: Unimmunized goat IgG (10ug/ml) followed by Alexa Fluor 488 secondary antibody (2ug/ml).



EB05054 Flow cytometric analysis of paraformaldehyde fixed HeLa cells (blue line), permeabilized with 0.5% Triton. Primary incubation 1hr (10ug/ml) followed by Alexa Fluor 488 secondary antibody (1ug/ml). IgG control: Unimmunized goat IgG (black line) followed by Alexa Fluor 488 secondary antibody.



EB05054 (5µg/ml) staining of paraffin embedded Human Colon. Steamed antigen retrieval with citrate buffer pH 6, AP-staining.