

UK Office

Everest Biotech Ltd

Cherwell Innovation Centre
77 Heyford Park
Upper Heyford
Oxfordshire
OX25 5HD
UK

Enquiries:

info@everestbiotech.com

Sales:

sales@everestbiotech.com

Tech support:

support@everestbiotech.com

Tel: +44 (0)1869 238326

www.everestbiotech.com

**Research Use Only. Not for
diagnostic or therapeutic use.**

EB07895 - Goat Anti-NCF4 / P40PHOX Antibody

Size: 100µg specific antibody in 200µl



Target Protein

Principal Names: NCF4, P40PHOX, neutrophil cytosolic factor 4, 40kDa, CTA-833B7.1, MGC3810, NCF, SH3PXD4, OTTHUMP00000028736, OTTHUMP00000043756, neutrophil NADPH oxidase factor 4, neutrophil cytosol factor 4, neutrophil cytosolic factor 4 (40kD)

Official Symbol: NCF4

Accession Number(s): NP_000622.2; NP_038202.1

Human GeneID(s): [4689](#)

Important Comments: This antibody is expected to recognise both reported isoforms (NP_000622.2 and NP_038202.1).

Immunogen

Peptide with sequence C-KDFPEEDDPTN, from the internal region of the protein sequence according to NP_000622.2; NP_038202.1.

Please note the [peptide](#) is available for sale.

Purification and Storage

Purified from goat serum by ammonium sulphate precipitation followed by antigen affinity chromatography using the immunizing peptide.

Supplied at 0.5 mg/ml in Tris saline, 0.02% sodium azide, pH7.3 with 0.5% bovine serum albumin.

Aliquot and store at -20°C. Minimize freezing and thawing.

Applications Tested

Peptide ELISA: antibody detection limit dilution 1:32000.

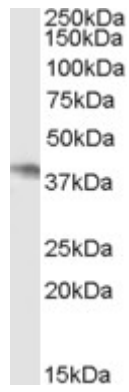
Western blot: Approx. 38kDa band observed in lysates of cell line Daudi (calculated MW of 39.0kDa according to NP_000622.2 and 38.8kDa according to NP_038202.1). In transfected HEK293 transiently expressing P40PHOX a band of approx. 42kDa is observed. This band is not observed in the non-transfected HEK293. Recommended concentration: 0.3-1µg/ml. Primary incubation was 1 hour.

IHC: Paraffin embedded Human Tonsil and Spleen. Recommended concentration: 2.5µg/ml.

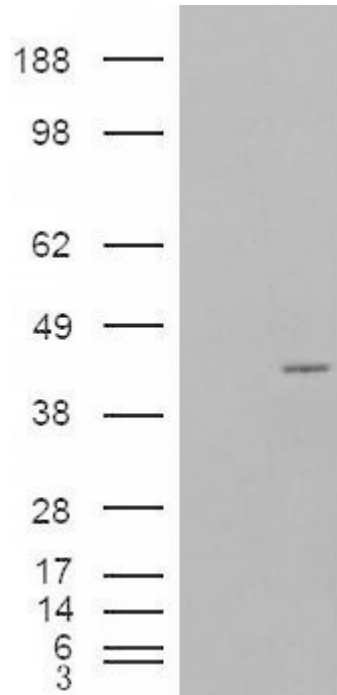
Species Reactivity

Tested: Human

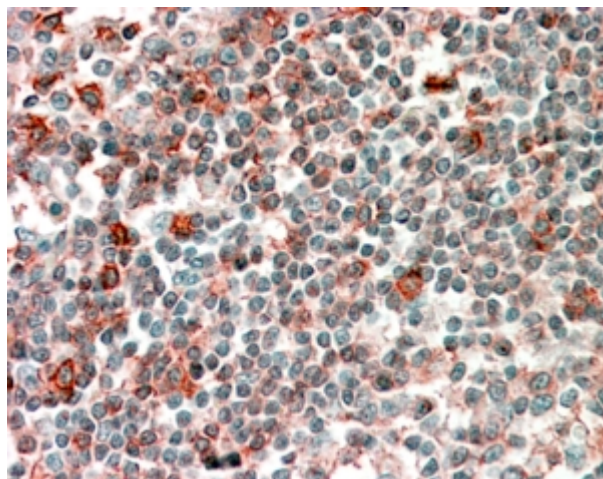
Expected from sequence similarity: Human



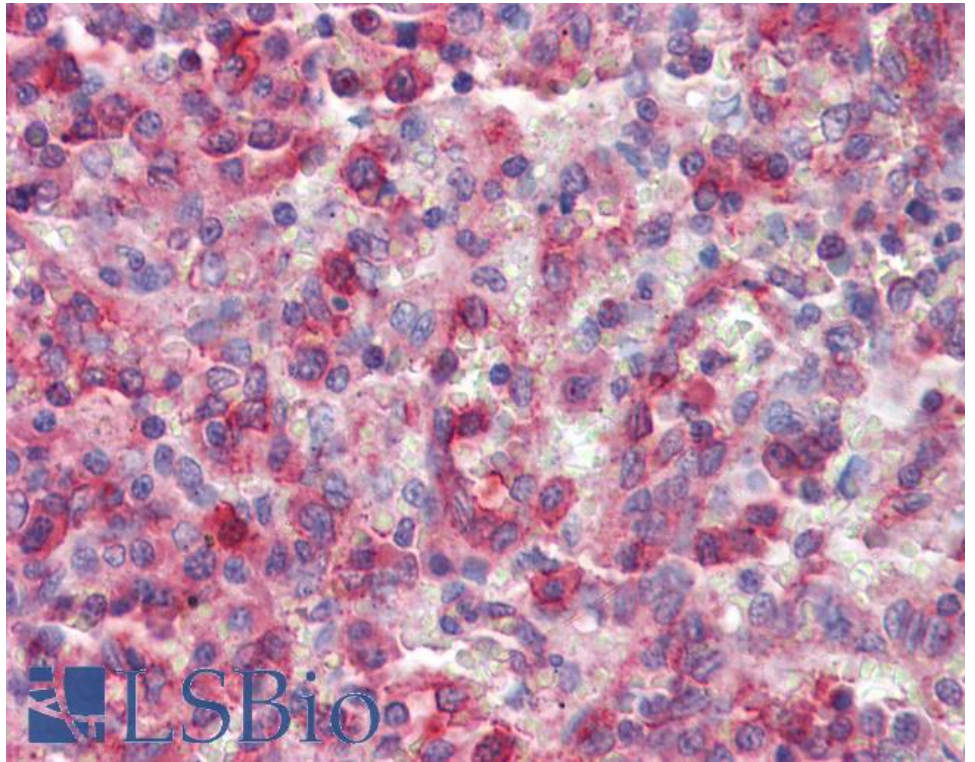
EB07895 (0.5µg/ml) staining of Daudi cell lysate (35µg protein in RIPA buffer). Detected by chemiluminescence.



HEK293 overexpressing P40PHOX (RC201191) and probed with EB07895 (mock transfection in first lane), tested by Origene.



EB07895 (2.5µg/ml) staining of paraffin embedded Human Tonsil. Steamed antigen retrieval with citrate buffer pH 6, AP-staining.



EB07895 (2.5µg/ml) staining of paraffin embedded Human Spleen. Steamed antigen retrieval with citrate buffer pH 6, AP-staining.