



## UK Office

### Everest Biotech Ltd

Cherwell Innovation Centre  
77 Heyford Park  
Upper Heyford  
Oxfordshire  
OX25 5HD  
UK

Enquiries:

[info@everestbiotech.com](mailto:info@everestbiotech.com)

Sales:

[sales@everestbiotech.com](mailto:sales@everestbiotech.com)

Tech support:

[support@everestbiotech.com](mailto:support@everestbiotech.com)

Tel: +44 (0)1869 238326

Fax: +44 (0)1869 238327

## US Office

### Everest Biotech c/o Abcore

405 Maple Street, Suite A106  
Ramona,  
CA 92065  
USA

Inquiries:

[info@everestbiotech.com](mailto:info@everestbiotech.com)

Sales:

[usasales@everestbiotech.com](mailto:usasales@everestbiotech.com)

Tech support:

[support@everestbiotech.com](mailto:support@everestbiotech.com)

Tel: 888-320-4628 (toll-free)

Fax: 888-841-9041

[www.everestbiotech.com](http://www.everestbiotech.com)

**Research Use Only. Not for  
diagnostic or therapeutic use.**

## EB08455 - Goat Anti-NCOA3 Antibody

Size: 100µg specific antibody in 200µl



### Target Protein

**Principal Names:** NCOA3, nuclear receptor coactivator 3, RP5-1049G16.3, ACTR, AIB-1, AIB1, CAGH16, CTG26, MGC141848, RAC3, SRC-1, SRC3, TNRC14, TNRC16, TRAM-1, pCIP, CBP-interacting protein, amplified in breast cancer-1, receptor-associated coactivator 3

**Official Symbol:** NCOA3

**Accession Number(s):** NP\_006525.2; NP\_858045.1

**Human GeneID(s):** [8202](#)

**Important Comments:** This antibody is expected to recognise both reported isoforms (NP\_006525.2; NP\_858045.1)

### Immunogen

Peptide with sequence C-TNETQRQKSHT, from the internal region of the protein sequence according to NP\_006525.2; NP\_858045.1.

Please note the [peptide](#) is available for sale.

### Purification and Storage

Purified from goat serum by ammonium sulphate precipitation followed by antigen affinity chromatography using the immunizing peptide.

Supplied at 0.5 mg/ml in Tris saline, 0.02% sodium azide, pH7.3 with 0.5% bovine serum albumin.

Aliquot and store at -20°C. Minimize freezing and thawing.

### Applications Tested

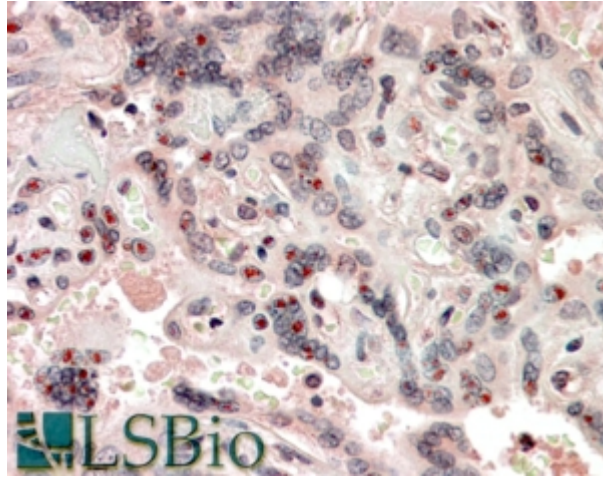
**Peptide ELISA:** antibody detection limit dilution 1:16000.

**IHC:** Paraffin embedded Human Placenta and Spleen. Recommended concentration: 3.75µg/ml.

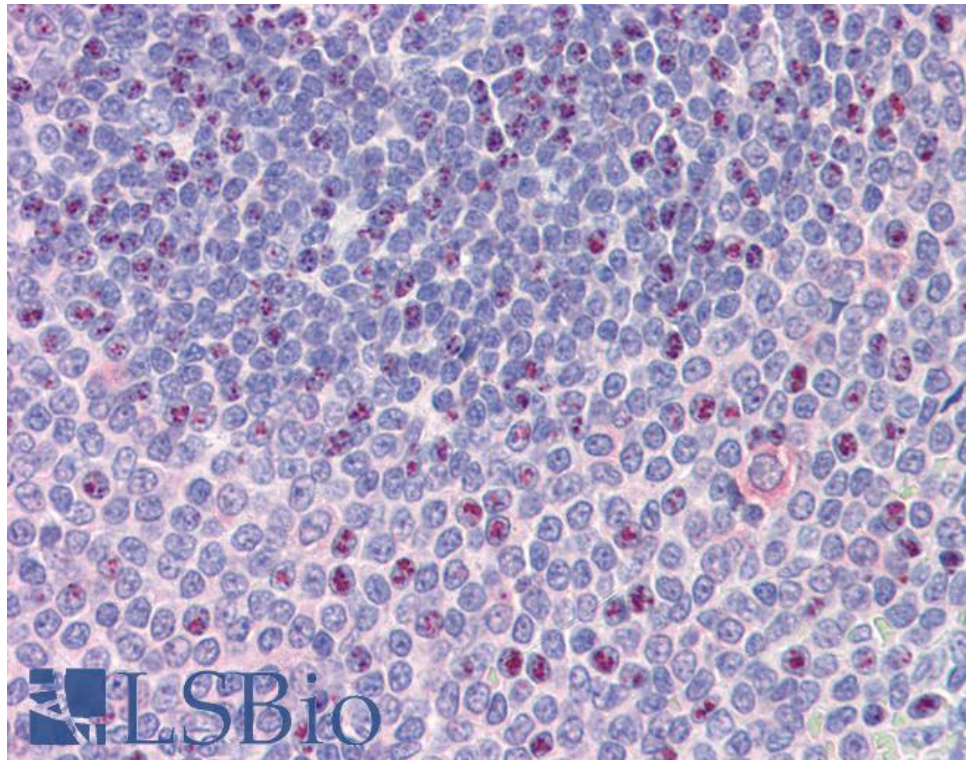
### Species Reactivity

**Tested:** Human

**Expected from sequence similarity:** Human, Mouse



EB08455 (3.75µg/ml) staining of paraffin embedded Human Placenta. Steamed antigen retrieval with citrate buffer pH 6, AP-staining.



EB08455 (3.75µg/ml) staining of paraffin embedded Human Spleen. Steamed antigen retrieval with citrate buffer pH 6, AP-staining.