



## International Office

### Everest Biotech Ltd

Vector Laboratories, Inc.  
6737 Mowry Ave  
Newark, CA 94560  
United States

Customer Service:

[customerservice@vectorlabs.com](mailto:customerservice@vectorlabs.com)

Technical Service:

[technical@vectorlabs.com](mailto:technical@vectorlabs.com)

Tel: +1 (800) 227-6666

[www.everestbiotech.com](http://www.everestbiotech.com)

**Research Use Only. Not for  
diagnostic or therapeutic use.**

## EB10791 - Goat Anti-NDR1 / STK38 (aa362-377) Antibody

Size: 100µg specific antibody in 200µl



### Target Protein

**Principal Names:** STK38, serine/threonine kinase 38, NDR, NDR1, NDR1 protein kinase, Ndr Ser/Thr kinase-like protein, nuclear Dbf2-related 1, nuclear Dbf2-related kinase 1, serine threonine protein kinase

**Official Symbol:** STK38

**Accession Number(s):** NP\_009202.1

**Human GeneID(s):** [11329](#)

**Non-Human GeneID(s):** 106504 (mouse), 361813 (rat)

**Important Comments:** This antibody is NOT expected to cross-react with STK38L (GeneID 23012).

### Immunogen

Peptide with sequence CEWEHRIGAPGVVEIK, from the internal region of the protein sequence according to NP\_009202.1.

Please note the [peptide](#) is available for sale.

### Purification and Storage

Purified from goat serum by ammonium sulphate precipitation followed by antigen affinity chromatography using the immunizing peptide.

Supplied at 0.5 mg/ml in Tris saline, 0.02% sodium azide, pH7.3 with 0.5% bovine serum albumin.

Aliquot and store at -20°C. Minimize freezing and thawing.

### Applications Tested

**Peptide ELISA:** antibody detection limit dilution 1:32000.

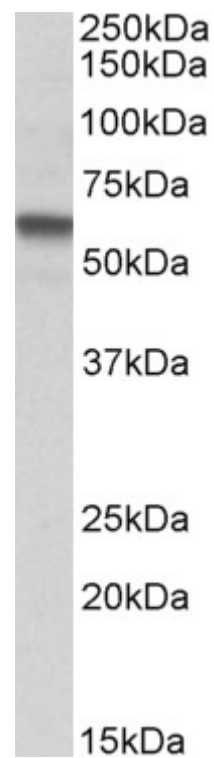
**Western blot:** Approx 55kDa band observed in Human Peripheral Blood

Mononucleocytes lysates and in Mouse Spleen and Testis lysates (calculated MW of 54.2kDa according to NP\_009202.1). Recommended concentration: 1-3µg/ml.

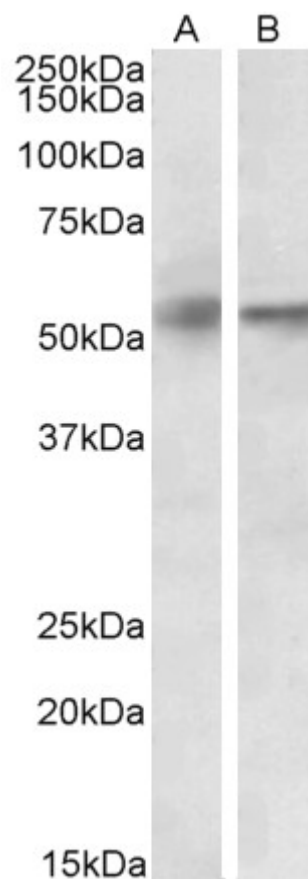
### Species Reactivity

**Tested:** Human, Mouse

**Expected from sequence similarity:** Human, Mouse, Rat, Dog, Pig, Cow



EB10791 (1 $\mu$ g/ml) staining of Peripheral Blood Lymphocytes lysate (35 $\mu$ g protein in RIPA buffer). Primary incubation was 1 hour. Detected by chemiluminescence.



EB10791 (1 $\mu$ g/ml) staining of Mouse Spleen (A) and Testis (B) lysates (35 $\mu$ g protein in RIPA buffer). Primary incubation was 1 hour. Detected by chemiluminescence.