

## UK Office

### Everest Biotech Ltd

Cherwell Innovation Centre  
77 Heyford Park  
Upper Heyford  
Oxfordshire  
OX25 5HD  
UK

Enquiries:

[info@everestbiotech.com](mailto:info@everestbiotech.com)

Sales:

[sales@everestbiotech.com](mailto:sales@everestbiotech.com)

Tech support:

[support@everestbiotech.com](mailto:support@everestbiotech.com)

Tel: +44 (0)1869 238326

[www.everestbiotech.com](http://www.everestbiotech.com)

**Research Use Only. Not for  
diagnostic or therapeutic use.**

## EB05707 - Goat Anti-NDRG1 Antibody

Size: 100µg specific antibody in 200µl



### Target Protein

**Principal Names:** NDRG1, N-myc downstream regulated gene 1, CAP43, CMT4D, DRG1, GC4, HMSNL, NDR1, NMSL, PROXY1, RIT42, RTP, TARG1, TDD5, N-myc downstream regulated gene 1 protein, differentiation-related gene 1 protein, nickel-specific induction protein Cap43, protein regulated by oxygen-1, reducing agents and tunicamycin-responsive protein, tunicamycin-responsive protein, DRG-1

**Official Symbol:** NDRG1

**Accession Number(s):** NP\_006087.2

**Human GeneID(s):** [10397](#)

**Non-Human GeneID(s):** 17990 (mouse)

**Important Comments:** The variants (NP\_006087.2; NP\_001128714.1) encode the same protein

### Immunogen

Peptide with sequence GNSAGPKSMEVSC, from the C Terminus of the protein sequence according to NP\_006087.2.

Please note the [peptide](#) is available for sale.

### Purification and Storage

Purified from goat serum by ammonium sulphate precipitation followed by antigen affinity chromatography using the immunizing peptide.

Supplied at 0.5 mg/ml in Tris saline, 0.02% sodium azide, pH7.3 with 0.5% bovine serum albumin.

Aliquot and store at -20°C. Minimize freezing and thawing.

### Applications Tested

**Peptide ELISA:** antibody detection limit dilution 1:32000.

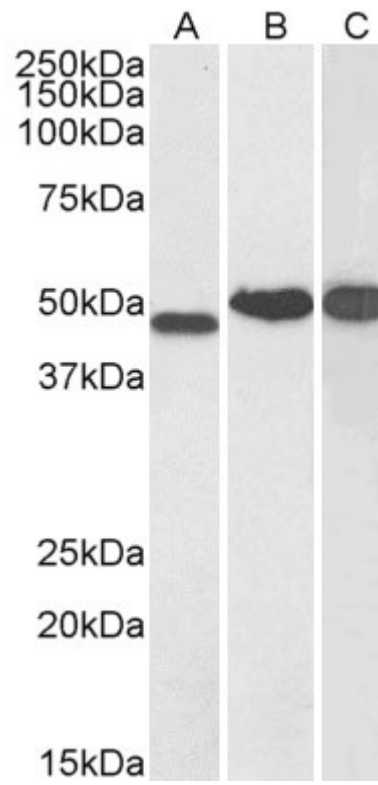
**Western blot:** Approx 48kDa band observed in Human Kidney, and approx 50kDa band observed in Human Brain (Cerebellum) and Testis lysates (calculated MW of 42.8kDa according to NP\_006087.2). This molecular weight is routinely observed by other sources. Recommended concentration: 0.1-0.3µg/ml. Primary incubation was 1 hour. Preliminary testing was unsuccessful on Mouse and Rat for this particular batch.

**IHC:** In paraffin embedded Human hepatocellular carcinoma shows strong labeling of membranes and weaker staining of cytoplasm. These observations are consistent with those obtained by different antibodies. Recommended concentration: 0.5-2µg/ml. Paraffin embedded Human Prostate and Colon. Recommended concentration: 2.5µg/ml.

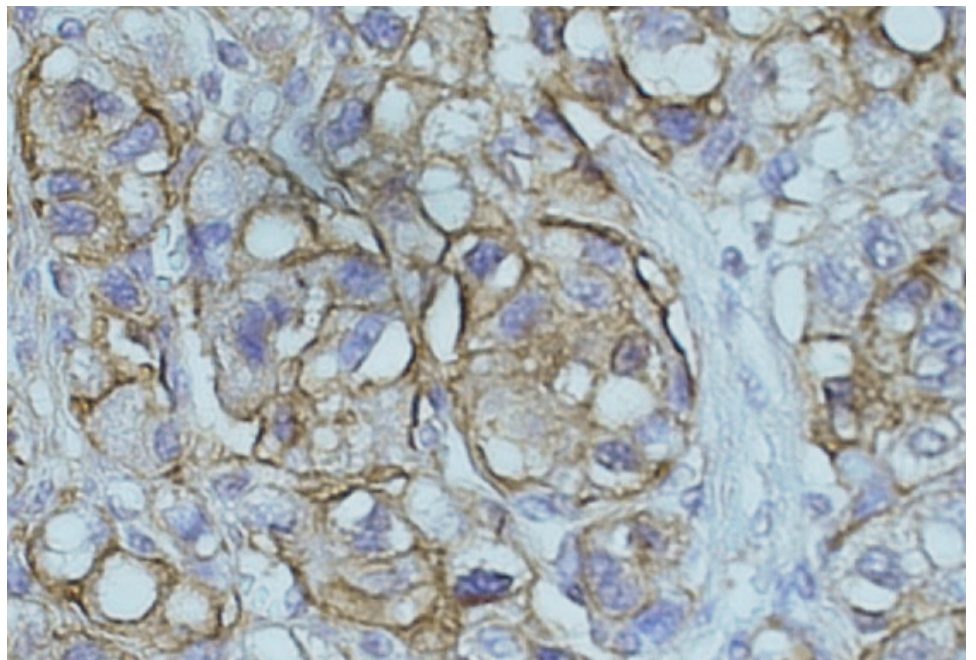
### Species Reactivity

**Tested:** Human

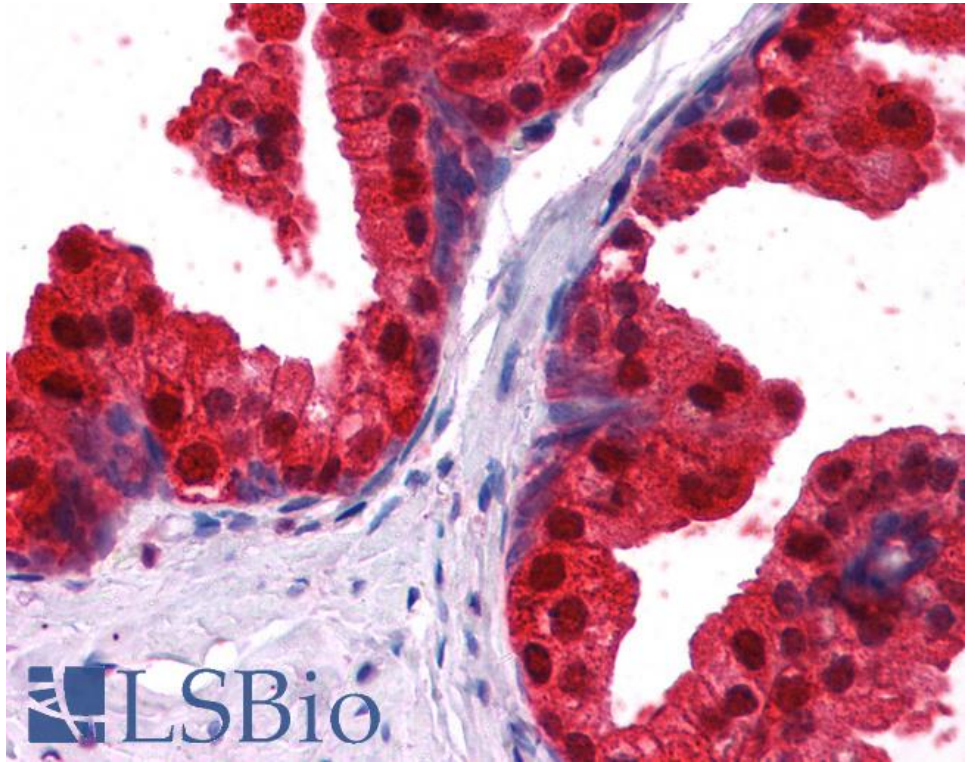
**Expected from sequence similarity:** Human



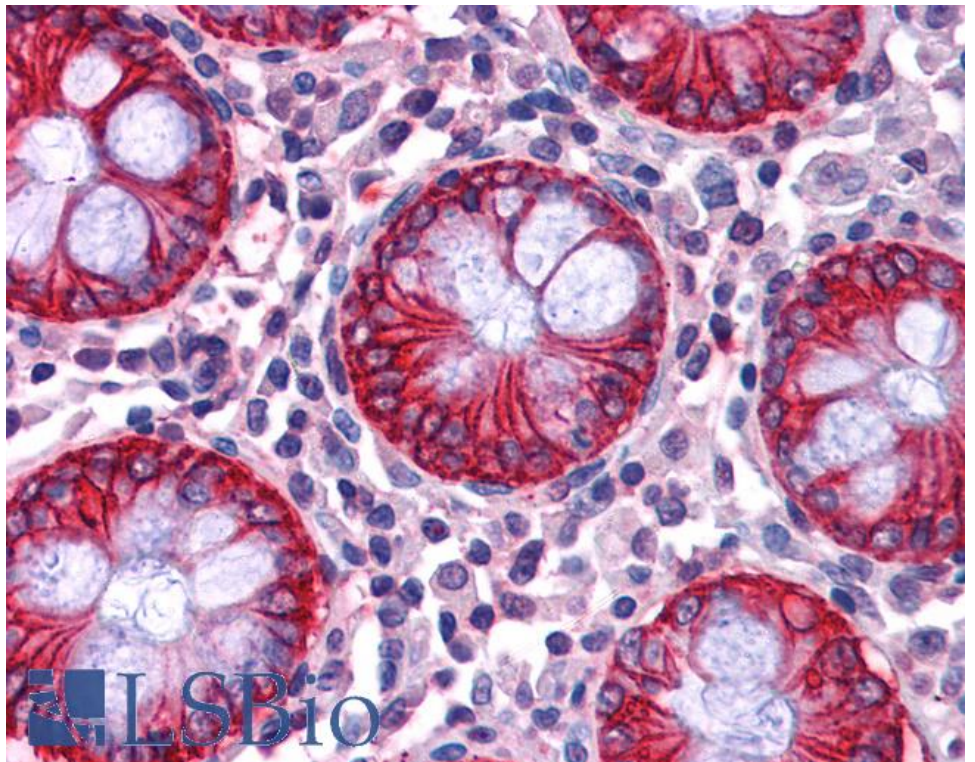
EB05707 (0.1µg/ml) staining of Human Kidney (A), Cerebellum (B) and Testis (C) lysate (35µg protein in RIPA buffer). Detected by chemiluminescence.



EB05707 (0.5µg/ml) staining of paraffin embedded Human hepatocellular carcinoma. Data obtained from C. Furer, Visceral Surgery, University of Bern, Switzerland.



EB05707 (2.5µg/ml) staining of paraffin embedded Human Prostate. Steamed antigen retrieval with citrate buffer pH 6, AP-staining.



EB05707 (2.5µg/ml) staining of paraffin embedded Human Colon. Steamed antigen retrieval with citrate buffer pH 6, AP-staining.