



## UK Office

### Everest Biotech Ltd

Cherwell Innovation Centre  
77 Heyford Park  
Upper Heyford  
Oxfordshire  
OX25 5HD  
UK

Enquiries:

[info@everestbiotech.com](mailto:info@everestbiotech.com)

Sales:

[sales@everestbiotech.com](mailto:sales@everestbiotech.com)

Tech support:

[support@everestbiotech.com](mailto:support@everestbiotech.com)

Tel: +44 (0)1869 238326

Fax: +44 (0)1869 238327

## US Office

### Everest Biotech c/o Abcore

405 Maple Street, Suite A106  
Ramona,  
CA 92065  
USA

Inquiries:

[info@everestbiotech.com](mailto:info@everestbiotech.com)

Sales:

[usasales@everestbiotech.com](mailto:usasales@everestbiotech.com)

Tech support:

[support@everestbiotech.com](mailto:support@everestbiotech.com)

Tel: 888-320-4628 (toll-free)

Fax: 888-841-9041

[www.everestbiotech.com](http://www.everestbiotech.com)

**Research Use Only. Not for  
diagnostic or therapeutic use.**

## EB10793 - Goat Anti-NDRG2 Antibody

Size: 100µg specific antibody in 200µl



### Target Protein

**Principal Names:** NDRG2, NDRG family member 2, DKFZp781G1938, FLJ25522, KIAA1248, SYLD, N-myc downstream regulator 2, NDR1-related protein NDR2, OTTHUMP00000164405, OTTHUMP00000164407, OTTHUMP00000164408, cytoplasmic protein Ndr1, protein NDRG2, syld709

**Official Symbol:** NDRG2

**Accession Number(s):** NP\_963293.1

**Human GeneID(s):** [57447](#)

**Non-Human GeneID(s):** 29811 (mouse), 171114 (rat)

**Important Comments:** This antibody is expected to recognize reported isoform a (NP\_963293.1) only. Reported variants represent identical protein: NP\_963831.1, NP\_963293.1, NP\_963834.1, NP\_963833.1.

### Immunogen

Peptide with sequence KEAELAARILLDQGG-C, from the N Terminus (near) of the protein sequence according to NP\_963293.1.

Please note the [peptide](#) is available for sale.

### Purification and Storage

Purified from goat serum by ammonium sulphate precipitation followed by antigen affinity chromatography using the immunizing peptide.

Supplied at 0.5 mg/ml in Tris saline, 0.02% sodium azide, pH7.3 with 0.5% bovine serum albumin.

Aliquot and store at -20°C. Minimize freezing and thawing.

### Applications Tested

**Peptide ELISA:** antibody detection limit dilution 1:16000.

**Western blot:** Approx 45kDa band observed in Human Brain (Temporal Cortex), Mouse and Rat Brain lysates (calculated MW of 40.8kDa according to NP\_963293.1).

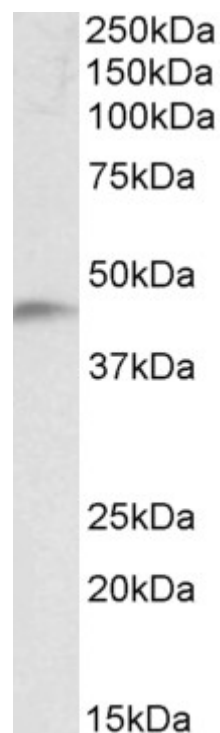
Recommended concentration: 0.1-0.3µg/ml. Primary incubation was 1 hour.

**IHC:** Paraffin embedded Human Adrenal Gland. Recommended concentration: 3.75µg/ml.

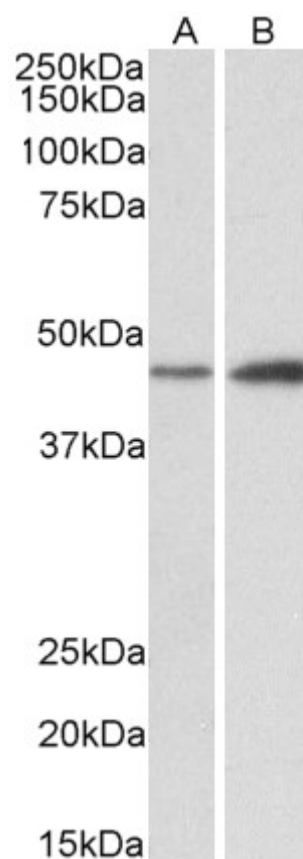
### Species Reactivity

**Tested:** Human, Mouse, Rat

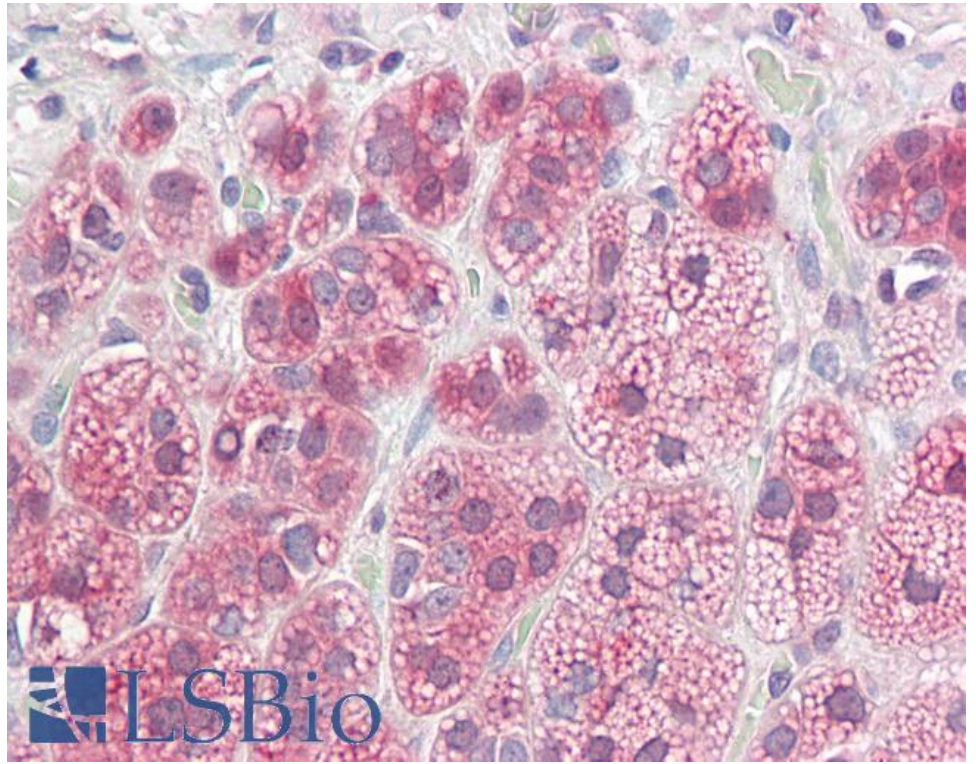
**Expected from sequence similarity:** Human, Mouse, Rat, Dog



EB10793 (0.1 $\mu$ g/ml) staining of Human Temporal Cortex lysate (35 $\mu$ g protein in RIPA buffer). Detected by chemiluminescence.



EB10793 (0.3 $\mu$ g/ml) staining of Mouse (A) and Rat (B) Brain lysates (35 $\mu$ g protein in RIPA buffer). Detected by chemiluminescence.



EB10793 (3.75µg/ml) staining of paraffin embedded Human Adrenal Gland. Steamed antigen retrieval with citrate buffer pH 6, AP-staining.