

## UK Office

### Everest Biotech Ltd

Cherwell Innovation Centre  
77 Heyford Park  
Upper Heyford  
Oxfordshire  
OX25 5HD  
UK

Enquiries:

[info@everestbiotech.com](mailto:info@everestbiotech.com)

Sales:

[sales@everestbiotech.com](mailto:sales@everestbiotech.com)

Tech support:

[support@everestbiotech.com](mailto:support@everestbiotech.com)

Tel: +44 (0)1869 238326

[www.everestbiotech.com](http://www.everestbiotech.com)

**Research Use Only. Not for  
diagnostic or therapeutic use.**

## EB11684 - Goat Anti-NDUFA7 (aa27-38) Antibody

Size: 100µg specific antibody in 200µl



### Target Protein

**Principal Names:** B14.5a, CI-B14.5a, complex I B14.5a subunit, NADH dehydrogenase (ubiquinone) 1 alpha subcomplex, 7, 14.5kDa, NADH dehydrogenase [ubiquinone] 1 alpha subcomplex subunit 7, NADH-ubiquinone oxidoreductase subunit B14.5a, NDUFA7

**Official Symbol:** NDUFA7

**Accession Number(s):** NP\_004992.2

**Human GeneID(s):** [4701](#)

### Immunogen

Peptide with sequence C-RYQEISKRTQPP, from the internal region of the protein sequence according to NP\_004992.2.

Please note the [peptide](#) is available for sale.

### Purification and Storage

Purified from goat serum by ammonium sulphate precipitation followed by antigen affinity chromatography using the immunizing peptide.

Supplied at 0.5 mg/ml in Tris saline, 0.02% sodium azide, pH7.3 with 0.5% bovine serum albumin.

Aliquot and store at -20°C. Minimize freezing and thawing.

### Applications Tested

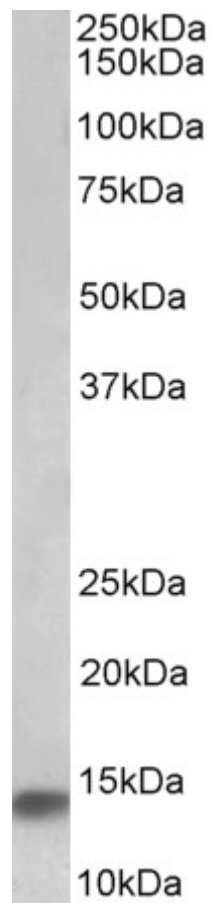
**Peptide ELISA:** antibody detection limit dilution 1:128000.

**Western blot:** Approx 14kDa band observed in Human Heart lysates (calculated MW of 12.6kDa according to NP\_004992.2). Recommended concentration: 0.1-0.3µg/ml.

### Species Reactivity

**Tested:** Human

**Expected from sequence similarity:** Human, Pig, Cow



EB11684 (0.1 $\mu$ g/ml) staining of Human Heart lysate (35 $\mu$ g protein in RIPA buffer). Primary incubation was 1 hour. Detected by chemiluminescence.