



## International Office

### Everest Biotech Ltd

Vector Laboratories, Inc.  
6737 Mowry Ave  
Newark, CA 94560  
United States

Customer Service:

[customerservice@vectorlabs.com](mailto:customerservice@vectorlabs.com)

Technical Service:

[technical@vectorlabs.com](mailto:technical@vectorlabs.com)

Tel: +1 (800) 227-6666

[www.everestbiotech.com](http://www.everestbiotech.com)

**Research Use Only. Not for  
diagnostic or therapeutic use.**

## EB11683 - Goat Anti-NDUFA7 Antibody

Size: 100µg specific antibody in 200µl



### Target Protein

**Principal Names:** B14.5a, CI-B14.5a, complex I B14.5a subunit, NADH dehydrogenase (ubiquinone) 1 alpha subcomplex, 7, 14.5kDa, NADH dehydrogenase [ubiquinone] 1 alpha subcomplex subunit 7, NADH-ubiquinone oxidoreductase subunit B14.5a, NDUFA7

**Official Symbol:** NDUFA7

**Accession Number(s):** NP\_004992.2

**Human GeneID(s):** [4701](#)

**Non-Human GeneID(s):** 66416 (mouse), 299643 (rat)

### Immunogen

Peptide with sequence C-PKLPVGPSHKLSNN, from the internal region of the protein sequence according to NP\_004992.2.

Please note the [peptide](#) is available for sale.

### Purification and Storage

Purified from goat serum by ammonium sulphate precipitation followed by antigen affinity chromatography using the immunizing peptide.

Supplied at 0.5 mg/ml in Tris saline, 0.02% sodium azide, pH7.3 with 0.5% bovine serum albumin.

Aliquot and store at -20°C. Minimize freezing and thawing.

### Applications Tested

**Peptide ELISA:** antibody detection limit dilution 1:128000.

**Western blot:** Approx 15kDa band observed in Human, Mouse, Rat and Pig Heart lysates (calculated MW of 12.6kDa according to NP\_004992.2). Recommended concentration: 0.03-0.1µg/ml. Primary incubation was 1 hour.

**IHC:** In paraffin embedded Human Heart shows mitochondrial staining in cardial fibres. Recommended concentration: 4-8µg/ml.

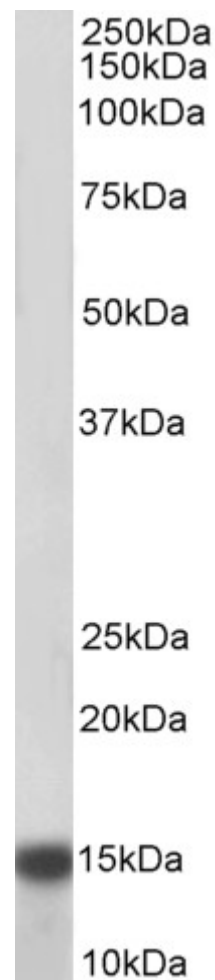
### Species Reactivity

**Tested:** Human, Mouse, Rat, Pig

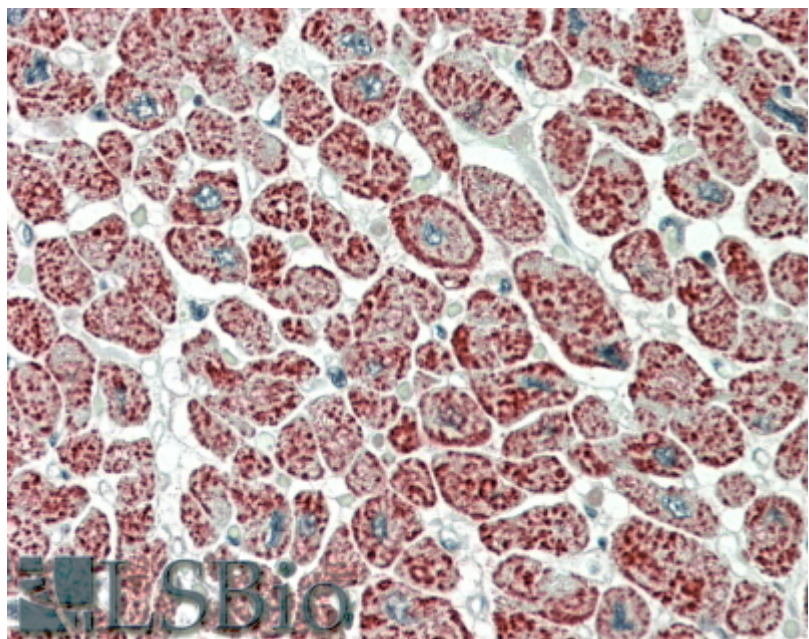
**Expected from sequence similarity:** Human, Mouse, Rat, Pig, Cow



EB11683 (0.1µg/ml) staining of Human (A), Mouse (B) and Rat (C) Heart lysates (35µg protein in RIPA buffer).  
Detected by chemiluminescence.



EB11683 (0.1µg/ml) staining of Pig Heart lysate (35µg protein in RIPA buffer). Detected by chemiluminescence.



EB11683 (5µg/ml) staining of paraffin embedded Human Heart. Steamed antigen retrieval with citrate buffer pH 6, AP-staining.