

## UK Office

### Everest Biotech Ltd

Cherwell Innovation Centre  
77 Heyford Park  
Upper Heyford  
Oxfordshire  
OX25 5HD  
UK

Enquiries:

[info@everestbiotech.com](mailto:info@everestbiotech.com)

Sales:

[sales@everestbiotech.com](mailto:sales@everestbiotech.com)

Tech support:

[support@everestbiotech.com](mailto:support@everestbiotech.com)

Tel: +44 (0)1869 238326

[www.everestbiotech.com](http://www.everestbiotech.com)

**Research Use Only. Not for  
diagnostic or therapeutic use.**

## EB10188 - Goat Anti-NDUFS1 Antibody

Size: 100µg specific antibody in 200µl



### Target Protein

**Principal Names:** CI-75Kd, complex I, mitochondrial respirato, MGC26839, NADH dehydrogenase (ubiquinone) Fe-S protein 1, 75kDa, NADH dehydrogenase (ubiquinone) Fe-S protein 1, 75kDa (NADH-coenzyme Q reductase), NADH-coenzyme Q reductase, OTTHUMP00000206345, PRO1304, NDUFS1

**Official Symbol:** NDUFS1

**Accession Number(s):** NP\_004997.4

**Human GeneID(s):** [4719](#)

**Non-Human GeneID(s):** 227197 (mouse), 301458 (rat)

### Immunogen

Peptide with sequence C-TEKSATYVNTEGR, from the internal region of the protein sequence according to NP\_004997.4.

Please note the [peptide](#) is available for sale.

### Purification and Storage

Purified from goat serum by ammonium sulphate precipitation followed by antigen affinity chromatography using the immunizing peptide.

Supplied at 0.5 mg/ml in Tris saline, 0.02% sodium azide, pH7.3 with 0.5% bovine serum albumin.

Aliquot and store at -20°C. Minimize freezing and thawing.

### Applications Tested

**Peptide ELISA:** antibody detection limit dilution 1:64000.

**Western blot:** Approx 80kDa band observed in Human Heart and Mouse Heart lysates (calculated MW of 79.5kDa according to NP\_004997.4). Recommended concentration: 0.3-1µg/ml. Primary incubation was 1 hour.

**IHC:** Paraffin embedded Human Heart. Recommended concentration: 5µg/ml.

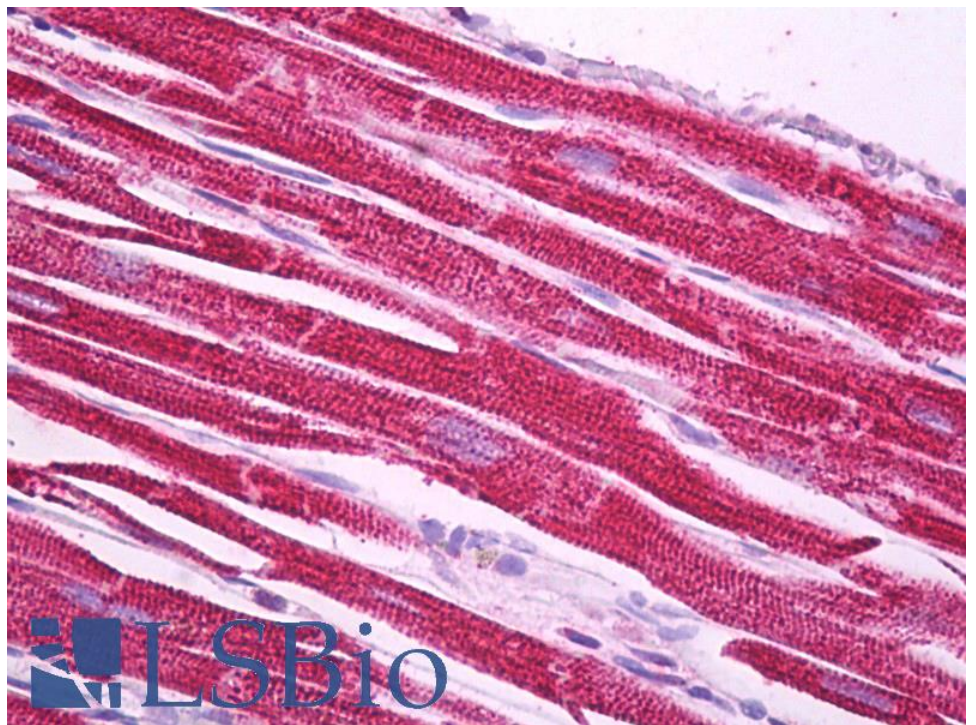
### Species Reactivity

**Tested:** Human, Mouse

**Expected from sequence similarity:** Human, Mouse, Rat, Dog, Cow



EB10188 (0.3 $\mu$ g/ml) staining of Human Heart lysate (35 $\mu$ g protein in RIPA buffer). Detected by chemiluminescence.



EB10188 (5 $\mu$ g/ml) staining of paraffin embedded Human Heart. Steamed antigen retrieval with citrate buffer pH 6, AP-staining.