

UK Office

Everest Biotech Ltd

Cherwell Innovation Centre
77 Heyford Park
Upper Heyford
Oxfordshire
OX25 5HD
UK

Enquiries:

info@everestbiotech.com

Sales:

sales@everestbiotech.com

Tech support:

support@everestbiotech.com

Tel: +44 (0)1869 238326

www.everestbiotech.com

**Research Use Only. Not for
diagnostic or therapeutic use.**

EB09788 - Goat Anti-NDUFS6 Antibody

Size: 100µg specific antibody in 200µl



Target Protein

Principal Names: NADH dehydrogenase (ubiquinone) Fe-S protein 6, 13kDa (NADH-coenzyme Q reductase), NDUFS6

Official Symbol: NDUFS6

Accession Number(s): NP_004544.1

Human GeneID(s): [4726](#)

Non-Human GeneID(s): 407785 (mouse), 29478 (rat)

Immunogen

Peptide with sequence C-RIRFVGRQKEVNEN, from the internal region of the protein sequence according to NP_004544.1.

Please note the [peptide](#) is available for sale.

Purification and Storage

Purified from goat serum by ammonium sulphate precipitation followed by antigen affinity chromatography using the immunizing peptide.

Supplied at 0.5 mg/ml in Tris saline, 0.02% sodium azide, pH7.3 with 0.5% bovine serum albumin.

Aliquot and store at -20°C. Minimize freezing and thawing.

Applications Tested

Peptide ELISA: antibody detection limit dilution 1:16000.

Western blot: Approx 15kDa band observed in Human Heart lysates and 14kDa in Mouse and Rat Heart lysates (calculated MW of 13.7kDa according to NP_004544.1).

Recommended concentration: 0.01-0.03µg/ml. Primary incubation was 1 hour.

IHC: Paraffin embedded Human Kidney. Recommended concentration: 5µg/ml.

Additional validation: This antibody has been successfully used in the following paper: Sikorski et al. (2018) PMID: 30377371.

Species Reactivity

Tested: Human, Mouse, Rat

Expected from sequence similarity: Human, Mouse, Rat, Dog, Cow

Specific Reference

This antibody has been successfully used in the following paper:

Krzysztof Sikorski, Adi Mehta, Marit Inngjerdigen, Flourina Thakor, Simon Kling, Tomas Kalina, Tuula A. Nyman, Maria Ekman Stensland, Wei Zhou, Gustavo A. De Souza, Lars Holden, Jan Stuchly, Markus Templin and Fridtjof Lund-Johansen

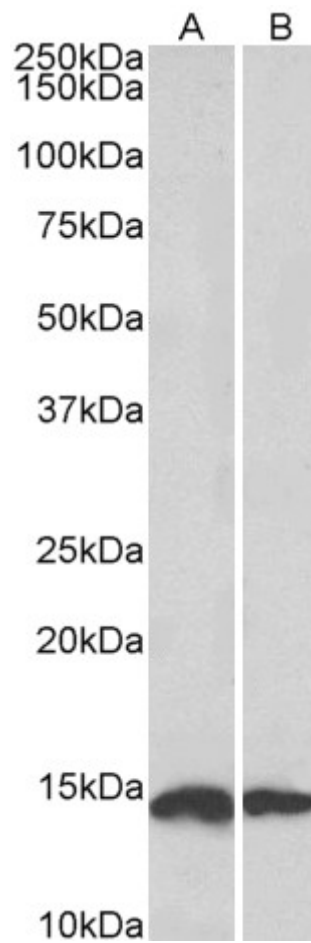
A high-throughput pipeline for validation of antibodies

Nat Methods. 2018 Nov;15(11):909-912

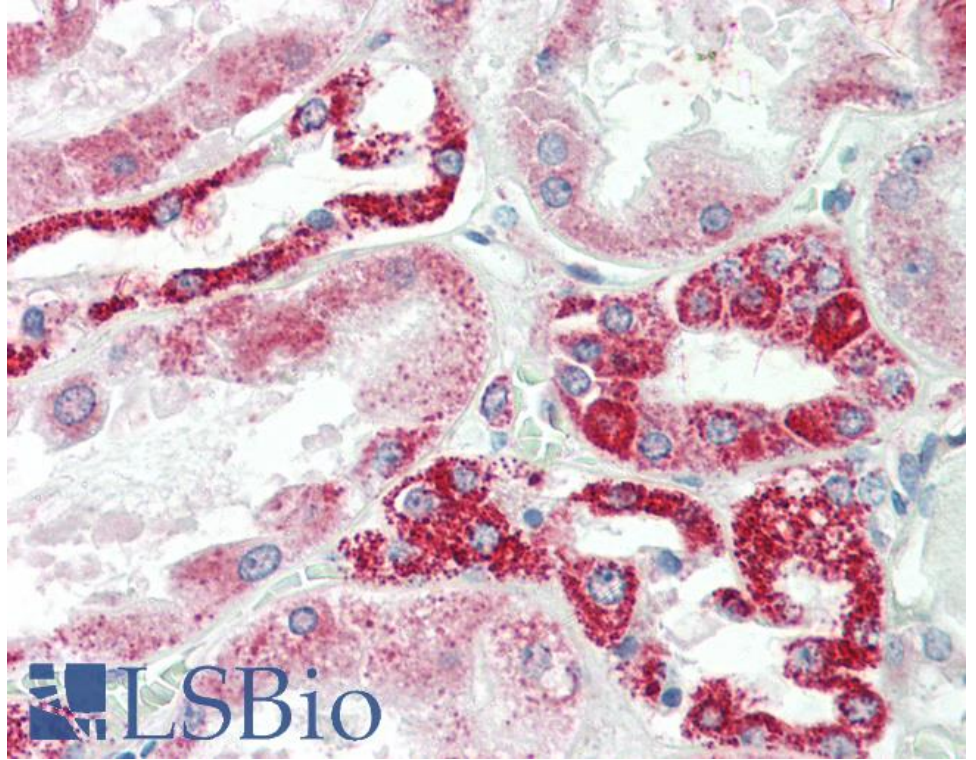
PMID: 30377371



EB09788 (0.01 μ g/ml) staining of Human Heart lysate (35 μ g protein in RIPA buffer). Detected by chemiluminescence.



EB09788 (0.1µg/ml) staining of Mouse (A) and Rat (B) Heart lysates (35µg protein in RIPA buffer). Detected by chemiluminescence.



EB09788 (5µg/ml) staining of paraffin embedded Human Kidney. Steamed antigen retrieval with citrate buffer pH 6, AP-staining.