



## International Office

### Everest Biotech Ltd

Vector Laboratories, Inc.  
6737 Mowry Ave  
Newark, CA 94560  
United States

Customer Service:

[customerservice@vectorlabs.com](mailto:customerservice@vectorlabs.com)

Technical Service:

[technical@vectorlabs.com](mailto:technical@vectorlabs.com)

Tel: +1 (800) 227-6666

[www.everestbiotech.com](http://www.everestbiotech.com)

**Research Use Only. Not for  
diagnostic or therapeutic use.**

## EB10191 - Goat Anti-NDUFS7 Antibody

Size: 100µg specific antibody in 200µl



### Target Protein

**Principal Names:** CI-20KD, FLJ45860, FLJ46880, MGC120002, MY017, NADH dehydrogenase (ubiquinone) Fe-S protein 7, 20kDa (NADH-coenzyme Q reductase), NADH dehydrogenase [ubiquinone] iron-sulfur protein 7, mitochondrial, NADH-coenzyme Q reductase, NADH-ubiquinon, PSST, NDUFS7

**Official Symbol:** NDUFS7

**Accession Number(s):** NP\_077718.3

**Human GeneID(s):** [374291](#)

**Non-Human GeneID(s):** 75406 (mouse), 362837 (rat)

### Immunogen

Peptide with sequence C-SRGEYVVAKLD, from the internal region of the protein sequence according to NP\_077718.3.

Please note the [peptide](#) is available for sale.

### Purification and Storage

Purified from goat serum by ammonium sulphate precipitation followed by antigen affinity chromatography using the immunizing peptide.

Supplied at 0.5 mg/ml in Tris saline, 0.02% sodium azide, pH7.3 with 0.5% bovine serum albumin.

Aliquot and store at -20°C. Minimize freezing and thawing.

### Applications Tested

**Peptide ELISA:** antibody detection limit dilution 1:16000.

**Western blot:** Approx 20kDa band observed in Human Heart and Human Skeletal Muscle lysates (calculated MW of 23.6kDa according to NP\_077718.3). Recommended concentration: 1-3µg/ml. Primary incubation was 1 hour.

**IHC:** Paraffin embedded Human Brain (Cortex) and Liver. Recommended concentration: 5µg/ml.

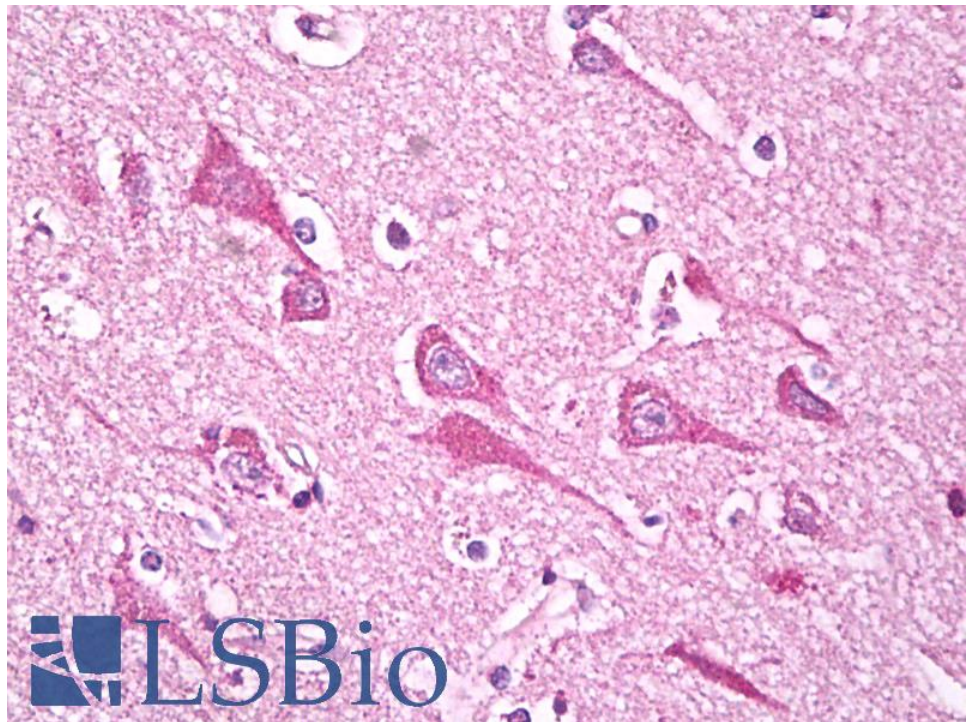
### Species Reactivity

**Tested:** Human

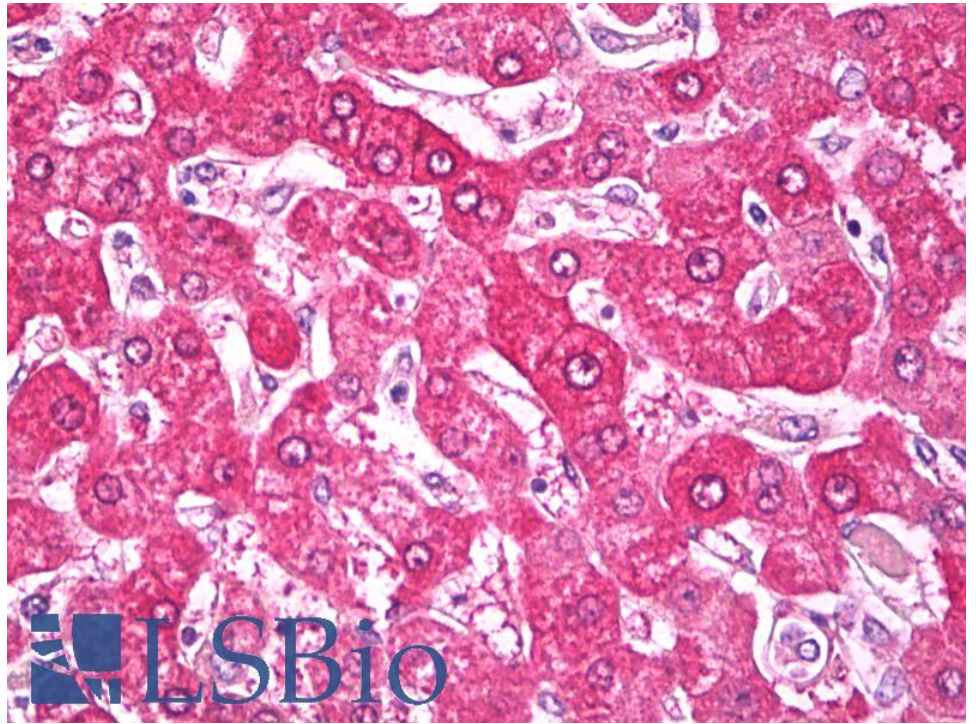
**Expected from sequence similarity:** Human, Mouse, Rat, Dog, Cow



EB010191(0.1 $\mu$ g/ml) staining of Human Heart lysate (35 $\mu$ g protein in RIPA buffer). Detected by chemiluminescence.



EB010191 (5 $\mu$ g/ml) staining of paraffin embedded Human Cortex. Steamed antigen retrieval with citrate buffer pH 6, AP-staining.



EB10191 (5µg/ml) staining of paraffin embedded Human Liver. Steamed antigen retrieval with citrate buffer pH 6, AP-staining.