

## UK Office

### Everest Biotech Ltd

Cherwell Innovation Centre  
77 Heyford Park  
Upper Heyford  
Oxfordshire  
OX25 5HD  
UK

Enquiries:

[info@everestbiotech.com](mailto:info@everestbiotech.com)

Sales:

[sales@everestbiotech.com](mailto:sales@everestbiotech.com)

Tech support:

[support@everestbiotech.com](mailto:support@everestbiotech.com)

Tel: +44 (0)1869 238326

[www.everestbiotech.com](http://www.everestbiotech.com)

**Research Use Only. Not for  
diagnostic or therapeutic use.**

## EB09641 - Goat Anti-NEFM / NF-M Antibody

Size: 100µg specific antibody in 200µl



### Target Protein

**Principal Names:** NEFM, neurofilament, medium polypeptide, NEF3, NF-M, NFM, neurofilament triplet M protein, neurofilament, medium polypeptide 150kDa, neurofilament-3 (150 kD medium)

**Official Symbol:** NEFM

**Accession Number(s):** NP\_005373.2

**Human GeneID(s):** [4741](#)

**Non-Human GeneID(s):** 18040 (mouse), 24588 (rat)

**Important Comments:** This antibody is expected to recognize reported isoform 1 (NP\_005373.2) only.

### Immunogen

Peptide with sequence C-QASHITVERKDYLK, from the internal region of the protein sequence according to NP\_005373.2.

Please note the [peptide](#) is available for sale.

### Purification and Storage

Purified from goat serum by ammonium sulphate precipitation followed by antigen affinity chromatography using the immunizing peptide.

Supplied at 0.5 mg/ml in Tris saline, 0.02% sodium azide, pH7.3 with 0.5% bovine serum albumin.

Aliquot and store at -20°C. Minimize freezing and thawing.

### Applications Tested

**Peptide ELISA:** antibody detection limit dilution 1:128000.

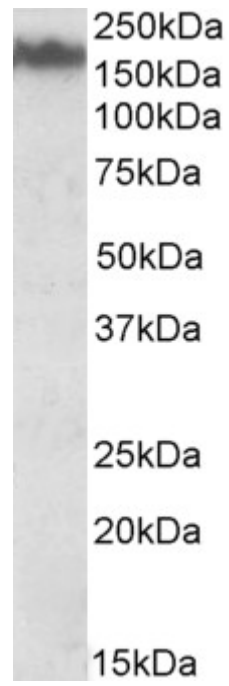
**Western blot:** Approx 170-200kDa band observed in Mouse Brain lysates (calculated MW of 102kDa according to NP\_005373.2). This molecular weight is routinely observed by other sources. Recommended concentration: 0.03-0.1µg/ml. Primary incubation was 1 hour.

**IHC:** Paraffin embedded Human Brain (Cortex). Recommended concentration: 5µg/ml.

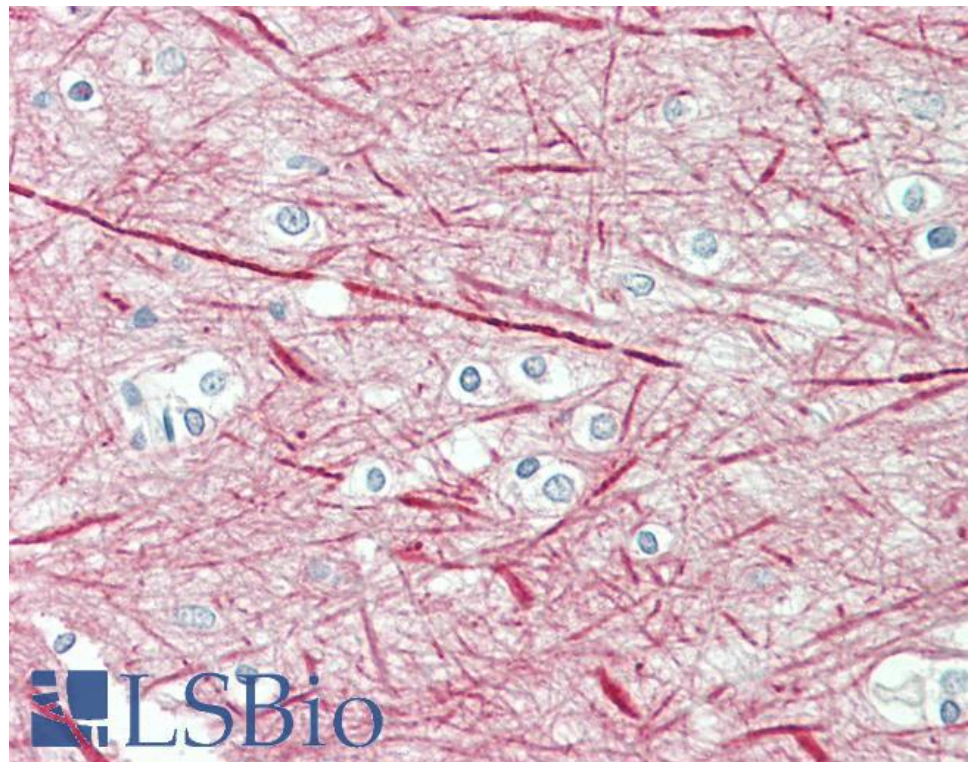
### Species Reactivity

**Tested:** Human, Mouse

**Expected from sequence similarity:** Human, Mouse, Rat, Dog, Pig, Cow



EB09641 (0.03 $\mu$ g/ml) staining of Mouse Brain lysate (35 $\mu$ g protein in RIPA buffer). Detected by chemiluminescence.



EB09641 (5 $\mu$ g/ml) staining of paraffin embedded Human Cortex. Steamed antigen retrieval with citrate buffer pH 6, AP-staining.