



UK Office

Everest Biotech Ltd

Cherwell Innovation Centre
77 Heyford Park
Upper Heyford
Oxfordshire
OX25 5HD
UK

Enquiries:

info@everestbiotech.com

Sales:

sales@everestbiotech.com

Tech support:

support@everestbiotech.com

Tel: +44 (0)1869 238326

www.everestbiotech.com

**Research Use Only. Not for
diagnostic or therapeutic use.**

EB05859 - Goat Anti-NEIL1 / NEH1 Antibody

Size: 100µg specific antibody in 200µl



Target Protein

Principal Names: NEIL1, NEH1, nei endonuclease VIII-like 1 (E. coli), NEI1, FLJ22402, endonuclease VIII, FPG1, hFPG1, nei endonuclease VIII-like 1

Official Symbol: NEIL1

Accession Number(s): NP_078884.2

Human GeneID(s): [79661](#)

Immunogen

Peptide with sequence C-DIPSLEPEGTSAS, from the C Terminus of the protein sequence according to NP_078884.2.

Please note the [peptide](#) is available for sale.

Purification and Storage

Purified from goat serum by ammonium sulphate precipitation followed by antigen affinity chromatography using the immunizing peptide.

Supplied at 0.5 mg/ml in Tris saline, 0.02% sodium azide, pH7.3 with 0.5% bovine serum albumin.

Aliquot and store at -20°C. Minimize freezing and thawing.

Applications Tested

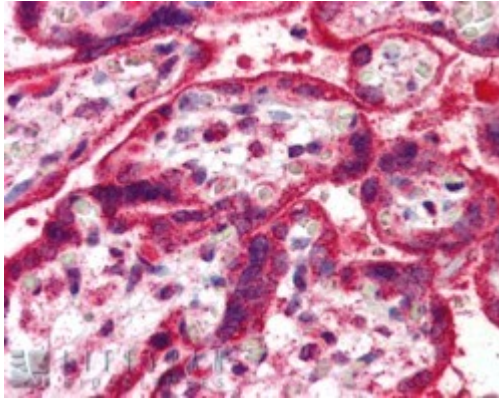
Peptide ELISA: antibody detection limit dilution 1:16000.

IHC: In paraffin embedded Human Placenta shows strong staining of cytoplasm in syncytiotrophoblasts. Recommended concentration, 5-10µg/ml.

Species Reactivity

Tested: Human

Expected from sequence similarity: Human, Pig, Cow



EB05859 (5 μ g/ml) staining of paraffin embedded Human Placenta. Steamed antigen retrieval with citrate buffer pH 6, AP-staining.