



UK Office

Everest Biotech Ltd

Cherwell Innovation Centre
77 Heyford Park
Upper Heyford
Oxfordshire
OX25 5HD
UK

Enquiries:

info@everestbiotech.com

Sales:

sales@everestbiotech.com

Tech support:

support@everestbiotech.com

Tel: +44 (0)1869 238326

www.everestbiotech.com

**Research Use Only. Not for
diagnostic or therapeutic use.**

EB10520 - Goat Anti-NEK7 (aa 274-286) Antibody

Size: 100µg specific antibody in 200µl



Target Protein

Principal Names: NIMA (never in mitosis gene a)-related kinase 7, NIMA-related kinase 7, NEK7

Official Symbol: NEK7

Accession Number(s): NP_598001.1

Human GeneID(s): [140609](#)

Non-Human GeneID(s): 59125 (mouse), 360850 (rat)

Immunogen

Peptide with sequence CINPDPEKRPDVT, from the C Terminus of the protein sequence according to NP_598001.1.

Please note the [peptide](#) is available for sale.

Purification and Storage

Purified from goat serum by ammonium sulphate precipitation followed by antigen affinity chromatography using the immunizing peptide.

Supplied at 0.5 mg/ml in Tris saline, 0.02% sodium azide, pH7.3 with 0.5% bovine serum albumin.

Aliquot and store at -20°C. Minimize freezing and thawing.

Applications Tested

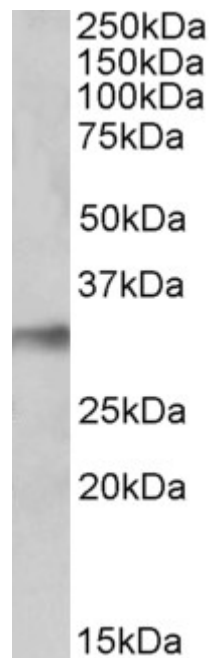
Peptide ELISA: antibody detection limit dilution 1:32000.

Western blot: Approx 30-33kDa band observed in Human Lung and Testis lysates and in Mouse and Rat Lung and Testis lysates (calculated MW of 34.6kDa according to Human NP_598001.1 and 34.5kDa according to Mouse NP_067618.1). Recommended concentration: 0.1-0.3µg/ml.

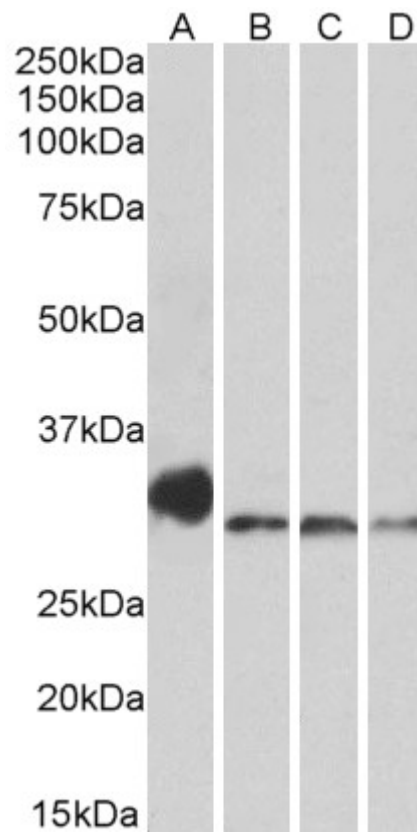
Species Reactivity

Tested: Human, Mouse, Rat

Expected from sequence similarity: Human, Mouse, Rat, Dog, Cow



EB10520 (0.1 μ g/ml) staining of Human Lung lysate (35 μ g protein in RIPA buffer). Primary incubation was 1 hour. Detected by chemiluminescence.



EB10520 (0.3 μ g/ml) staining of Mouse Lung (A), Mouse Testis (B), Rat Lung (C) and Rat Testis (D) lysates (35 μ g protein in RIPA buffer). Primary incubation was 1 hour. Detected by chemiluminescence.