

UK Office

Everest Biotech Ltd

Cherwell Innovation Centre
77 Heyford Park
Upper Heyford
Oxfordshire
OX25 5HD
UK

Enquiries:

info@everestbiotech.com

Sales:

sales@everestbiotech.com

Tech support:

support@everestbiotech.com

Tel: +44 (0)1869 238326

www.everestbiotech.com

**Research Use Only. Not for
diagnostic or therapeutic use.**

EB10519 - Goat Anti-NEK7 Antibody

Size: 100µg specific antibody in 200µl



Target Protein

Principal Names: NIMA (never in mitosis gene a)-related kinase 7, NIMA-related kinase 7, NEK7

Official Symbol: NEK7

Accession Number(s): NP_598001.1

Human GeneID(s): [140609](#)

Non-Human GeneID(s): 59125 (mouse), 360850 (rat)

Immunogen

Peptide with sequence C-NTLANFRIEKK, from the internal region of the protein sequence according to NP_598001.1.

Please note the [peptide](#) is available for sale.

Purification and Storage

Purified from goat serum by ammonium sulphate precipitation followed by antigen affinity chromatography using the immunizing peptide.

Supplied at 0.5 mg/ml in Tris saline, 0.02% sodium azide, pH7.3 with 0.5% bovine serum albumin.

Aliquot and store at -20°C. Minimize freezing and thawing.

Applications Tested

Peptide ELISA: antibody detection limit dilution 1:64000.

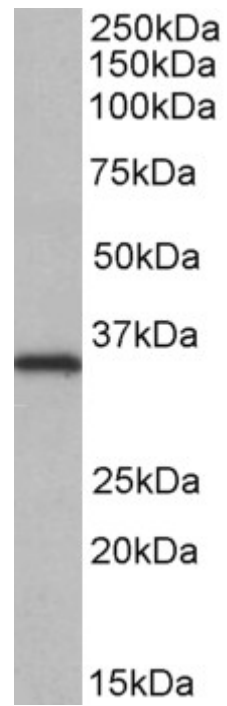
Western blot: Approx 35kDa band observed in lysates of cell line HeLa (calculated MW of 34.6kDa according to NP_598001.1). Recommended concentration: 0.05-0.2µg/ml. Primary incubation was 1 hour.

IHC: Paraffin embedded Human Thyroid. Recommended concentration: 3.75µg/ml.

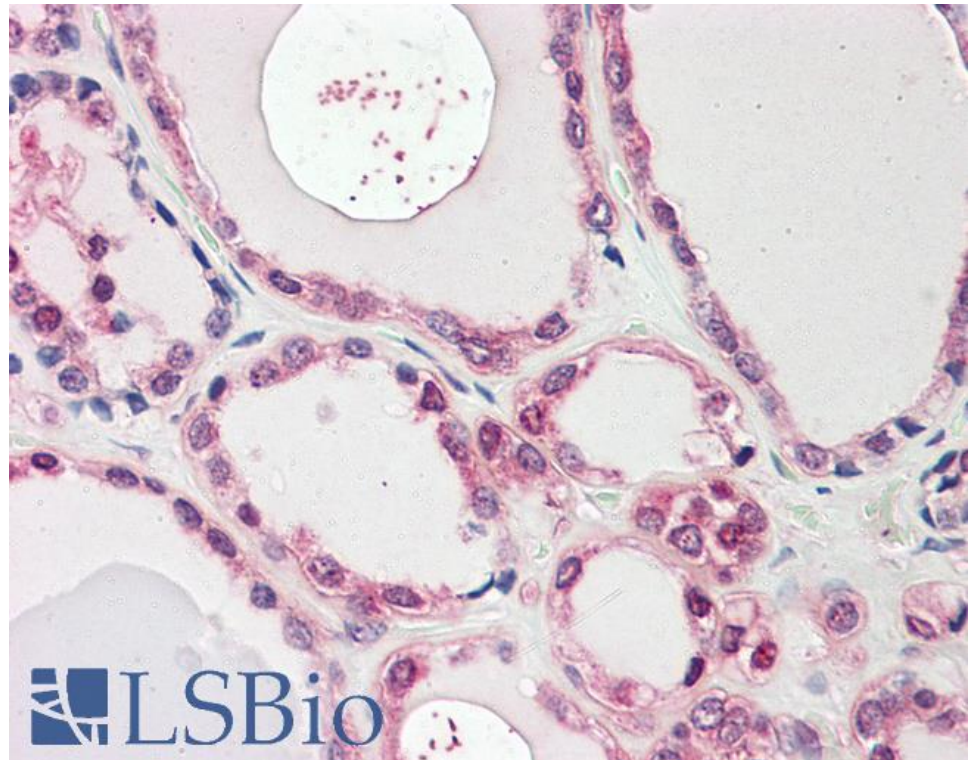
Species Reactivity

Tested: Human

Expected from sequence similarity: Human, Mouse, Rat, Dog, Cow



EB10519 (0.05 μ g/ml) staining of HeLa lysate (35 μ g protein in RIPA buffer). Detected by chemiluminescence.



EB10519 (3.75 μ g/ml) staining of paraffin embedded Human Thyroid. Steamed antigen retrieval with citrate buffer pH 6, AP-staining.