



UK Office

Everest Biotech Ltd

Cherwell Innovation Centre
77 Heyford Park
Upper Heyford
Oxfordshire
OX25 5HD
UK

Enquiries:

info@everestbiotech.com

Sales:

sales@everestbiotech.com

Tech support:

support@everestbiotech.com

Tel: +44 (0)1869 238326

Fax: +44 (0)1869 238327

US Office

Everest Biotech c/o Abcore

405 Maple Street, Suite A106
Ramona,
CA 92065
USA

Inquiries:

info@everestbiotech.com

Sales:

usasales@everestbiotech.com

Tech support:

support@everestbiotech.com

Tel: 888-320-4628 (toll-free)

Fax: 888-841-9041

www.everestbiotech.com

**Research Use Only. Not for
diagnostic or therapeutic use.**

EB07268 - Goat Anti-NET1 / ARHGEF8 (Internal) Antibody

Size: 100µg specific antibody in 200µl



Target Protein

Principal Names: NET1, ARHGEF8, neuroepithelial cell transforming gene 1, NET1A, Rho guanine nucleotide exchange factor (GEF) 8, guanine nucleotide regulatory protein (oncogene), neuroepithelioma transforming gene 1, p65 Net1 proto-oncogene protein, small GTP-binding protein regulator

Official Symbol: NET1

Accession Number(s): NP_005854.2; NP_001040625.1

Human GeneID(s): [10276](#)

Non-Human GeneID(s): 56349 (mouse), 307098 (rat)

Important Comments: This antibody is expected to recognize both reported isoforms (NP_001040625.1 and NP_005854.2).

Immunogen

Peptide with sequence C-DKLEYLDEKQRDPR, from the internal region of the protein sequence according to NP_005854.2; NP_001040625.1.

Please note the [peptide](#) is available for sale.

Purification and Storage

Purified from goat serum by ammonium sulphate precipitation followed by antigen affinity chromatography using the immunizing peptide.

Supplied at 0.5 mg/ml in Tris saline, 0.02% sodium azide, pH7.3 with 0.5% bovine serum albumin.

Aliquot and store at -20°C. Minimize freezing and thawing.

Applications Tested

Peptide ELISA: antibody detection limit dilution 1:16000.

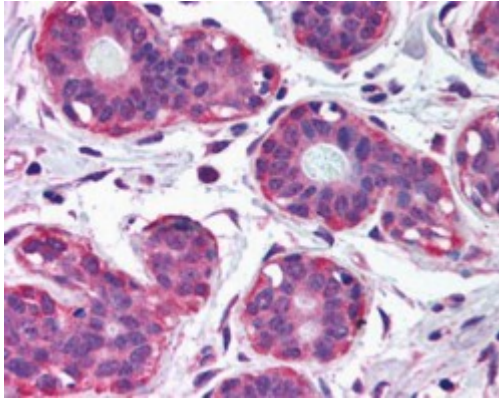
Western blot: Preliminary experiments gave an approx 80-90kDa double band in Human Placenta lysates after 0.3µg/ml antibody staining. Please note that currently we cannot find an explanation in the literature for the band we observe given the calculated size of 67.7kDa according to NP_001040625.1. The 80-90kDa band was successfully blocked by incubation with the immunizing peptide.

IHC: In paraffin embedded Human Breast shows cytoplasm staining of myoepithelial cells of ducts. Recommended concentration: 2.5µg/ml.

Species Reactivity

Tested: Human

Expected from sequence similarity: Human, Mouse, Rat, Dog



EB07268 (2.5µg/ml) staining of paraffin embedded Human Breast. Steamed antigen retrieval with citrate buffer pH 6, AP-staining.