



International Office

Everest Biotech Ltd

Vector Laboratories, Inc.
6737 Mowry Ave
Newark, CA 94560
United States

Customer Service:

customerservice@vectorlabs.com

Technical Service:

technical@vectorlabs.com

Tel: +1 (800) 227-6666

www.everestbiotech.com

**Research Use Only. Not for
diagnostic or therapeutic use.**

EB07831 - Goat Anti-Neurexin 1 Antibody

Size: 100µg specific antibody in 200µl



Target Protein

Principal Names: neurexin 1, DKFZp313P2036, NRXN1, FLJ35941, Hs.22998, KIAA0578, neurexin I

Official Symbol: NRXN1

Accession Number(s): NP_004792.1 ; NP_620072.1

Human GeneID(s): [9378](#)

Non-Human GeneID(s): 18189 (mouse), 60391 (rat)

Important Comments: This antibody is expected to recognise all reported isoforms.

Immunogen

Peptide with sequence C-KEKQPSSAKSSNKN, from the C Terminus of the protein sequence according to NP_004792.1 ; NP_620072.1.

Please note the [peptide](#) is available for sale.

Purification and Storage

Purified from goat serum by ammonium sulphate precipitation followed by antigen affinity chromatography using the immunizing peptide.

Supplied at 0.5 mg/ml in Tris saline, 0.02% sodium azide, pH7.3 with 0.5% bovine serum albumin.

Aliquot and store at -20°C. Minimize freezing and thawing.

Applications Tested

Peptide ELISA: antibody detection limit dilution 1:128000.

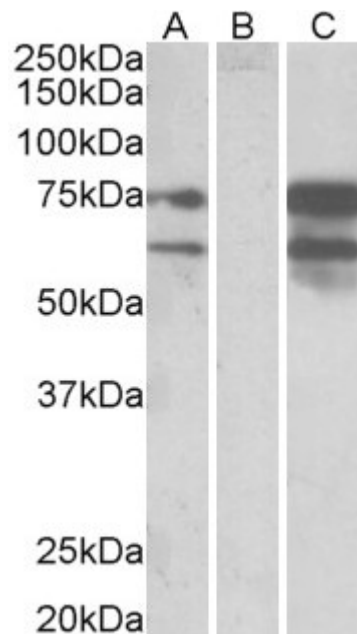
Western blot: In transfected HEK293 transiently expressing full-length Human NRXN1 (myc and DYKDDDDK tagged), bands of approx. 75 and 60kDa were observed. No bands were observed in mock-transfected HEK293 and the same band was observed using anti-DYKDDDDK tag antibody. Recommended concentration: 0.5-1µg/ml. Primary incubations were for 1 hour.

Flow Cytometry: Flow cytometric analysis of Kelly cells. Recommended concentration: 10ug/ml.

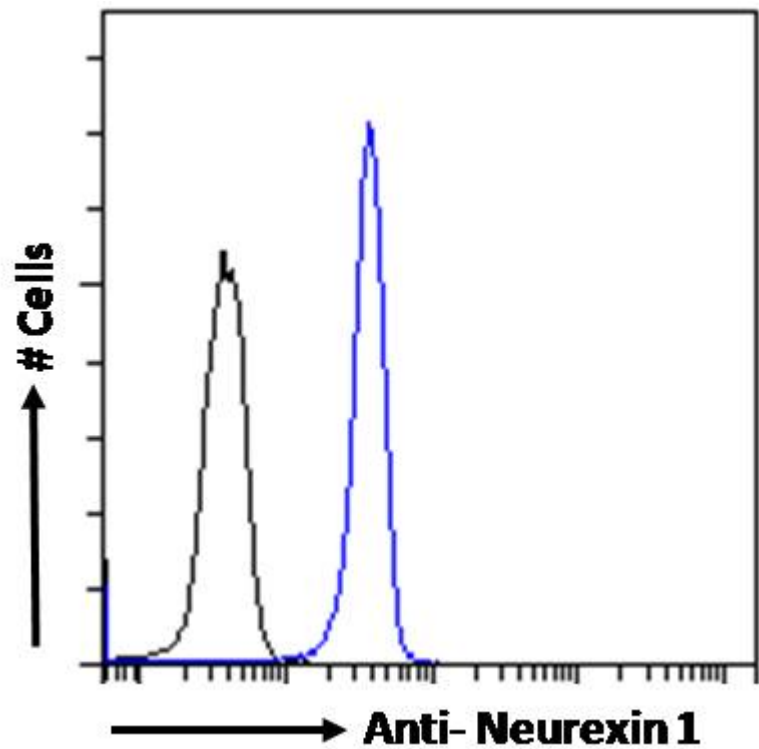
Species Reactivity

Tested: Human

Expected from sequence similarity: Human, Mouse, Rat, Dog



HEK293 lysate (10ug protein in RIPA buffer) overexpressing Human NRXN1 with DYKDDDDK tag probed with EB07831(0.5ug/ml) in Lane A and probed with anti- DYKDDDDK Tag (1/3000) in lane C. Mock-transfected HEK293 probed with EB07831(1mg/ml) in Lane B. Detected by chemiluminescence.



EB07831 Flow cytometric analysis of paraformaldehyde fixed Kelly cells (blue line), permeabilized with 0.5% Triton. Primary incubation 1hr (10ug/ml) followed by Alexa Fluor 488 secondary antibody (1ug/ml). IgG control: Unimmunized goat IgG (black line) followed by Alexa Fluor 488 secondary antibody.