



UK Office

Everest Biotech Ltd

Cherwell Innovation Centre
77 Heyford Park
Upper Heyford
Oxfordshire
OX25 5HD
UK

Enquiries:

info@everestbiotech.com

Sales:

sales@everestbiotech.com

Tech support:

support@everestbiotech.com

Tel: +44 (0)1869 238326

Fax: +44 (0)1869 238327

US Office

Everest Biotech c/o Abcore

405 Maple Street, Suite A106
Ramona,
CA 92065
USA

Inquiries:

info@everestbiotech.com

Sales:

usasales@everestbiotech.com

Tech support:

support@everestbiotech.com

Tel: 888-320-4628 (toll-free)

Fax: 888-841-9041

www.everestbiotech.com

**Research Use Only. Not for
diagnostic or therapeutic use.**

EB05827 - Goat Anti-Neuro-d4 / DPF1 Antibody

Size: 100µg specific antibody in 200µl



Target Protein

Principal Names: DPF1, NEUD4, neuro-d4, D4, zinc and double PHD fingers family 1, Neuro-d4 (rat) homolog, D4, zinc and double PHD fingers, family 1, MGC150428, MGC150429, BAF45b, OTTHUMP00000211615, neuro-d4 homolog

Official Symbol: DPF1

Accession Number(s): NP_001128627.1; NP_004638.2; NP_001128628.1

Human GeneID(s): [8193](#)

Non-Human GeneID(s): 29861 (mouse), 50545 (rat)

Important Comments: This antibody is expected to recognize all three reported isoforms (NP_001128627.1; NP_004638.2; NP_001128628.1).

Immunogen

Peptide with sequence C-HLKEKASAYITLT, from the C Terminus of the protein sequence according to NP_001128627.1; NP_004638.2; NP_001128628.1.

Please note the [peptide](#) is available for sale.

Purification and Storage

Purified from goat serum by ammonium sulphate precipitation followed by antigen affinity chromatography using the immunizing peptide.

Supplied at 0.5 mg/ml in Tris saline, 0.02% sodium azide, pH7.3 with 0.5% bovine serum albumin.

Aliquot and store at -20°C. Minimize freezing and thawing.

Applications Tested

Peptide ELISA: antibody detection limit dilution 1:2000.

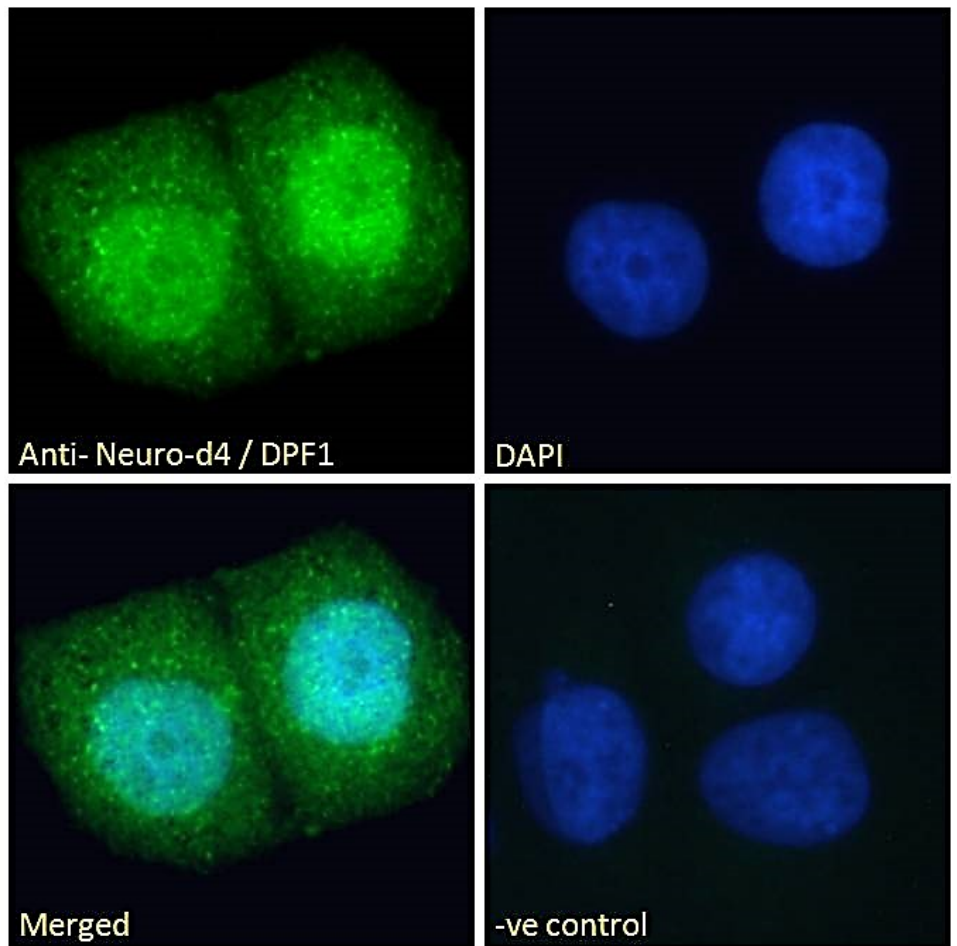
Western blot: Preliminary experiments showed a band at approx 38-40kDa in Human Cerebellum and Frontal Cortex lysates after 0.3-1µg/ml antibody staining (calculated MW of 37.9kDa according to NP_001128628.1. Primary incubation 1 hour at room temperature.

Immunofluorescence: Strong expression of the protein seen in the nuclei and weaker staining in the cytoplasm of MCF7 and U2OS cells. Recommended concentration: 10µg/ml.

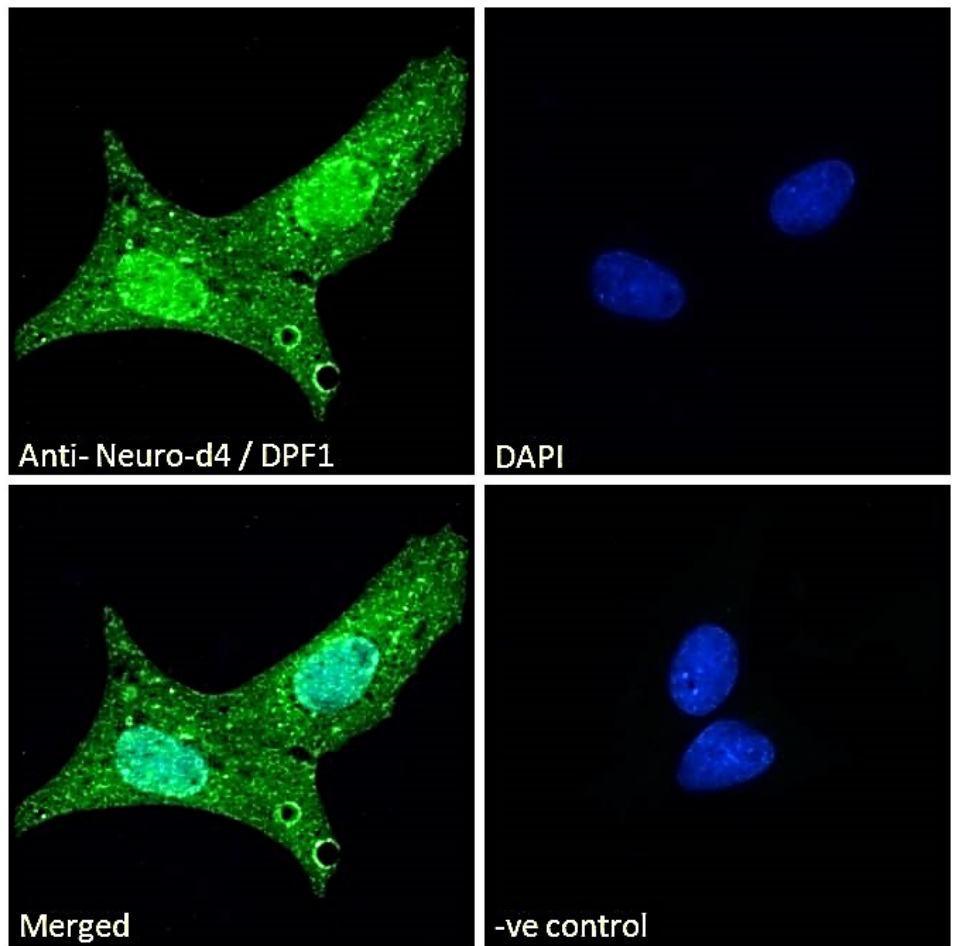
Species Reactivity

Tested: Human

Expected from sequence similarity: Human, Mouse, Rat, Cow



EB05827 Immunofluorescence analysis of paraformaldehyde fixed MCF7 cells, permeabilized with 0.15% Triton. Primary incubation 1hr (10ug/ml) followed by Alexa Fluor 488 secondary antibody (2ug/ml), showing strong nuclear and weak cytoplasmic staining. The nuclear stain is DAPI (blue). Negative control: Unimmunized goat IgG (10ug/ml) followed by Alexa Fluor 488 secondary antibody (2ug/ml).



EB05827 Immunofluorescence analysis of paraformaldehyde fixed U2OS cells, permeabilized with 0.15% Triton. Primary incubation 1hr (10ug/ml) followed by Alexa Fluor 488 secondary antibody (2ug/ml), showing strong nuclear and weak cytoplasmic staining. The nuclear stain is DAPI (blue). Negative control: Unimmunized goat IgG (10ug/ml) followed by Alexa Fluor 488 secondary antibody (2ug/ml).