



## UK Office

### Everest Biotech Ltd

Cherwell Innovation Centre  
77 Heyford Park  
Upper Heyford  
Oxfordshire  
OX25 5HD  
UK

Enquiries:

[info@everestbiotech.com](mailto:info@everestbiotech.com)

Sales:

[sales@everestbiotech.com](mailto:sales@everestbiotech.com)

Tech support:

[support@everestbiotech.com](mailto:support@everestbiotech.com)

Tel: +44 (0)1869 238326

[www.everestbiotech.com](http://www.everestbiotech.com)

**Research Use Only. Not for  
diagnostic or therapeutic use.**

## EB06147 - Goat Anti-Neurobeachin Antibody

Size: 100µg specific antibody in 200µl



### Target Protein

**Principal Names:** NBEA, neurobeachin, RP11-270C18.1, BCL8B, FLJ10197, KIAA1544, LYST2, lysosomal trafficking regulator, lysosomal trafficking regulator 2

**Official Symbol:** NBEA

**Accession Number(s):** NP\_056493.3; NP\_001191126.1

**Human GeneID(s):** [26960](#)

**Non-Human GeneID(s):** 26422 (mouse)

**Important Comments:** This antibody is expected to recognise isoform 1 (NP\_056493.3) and isoform 2 (NP\_001191126.1).

### Immunogen

Peptide with sequence C-DFNRWHYEHQNRV, from the C Terminus of the protein sequence according to NP\_056493.3; NP\_001191126.1.

Please note the [peptide](#) is available for sale.

### Purification and Storage

Purified from goat serum by ammonium sulphate precipitation followed by antigen affinity chromatography using the immunizing peptide.

Supplied at 0.5 mg/ml in Tris saline, 0.02% sodium azide, pH7.3 with 0.5% bovine serum albumin.

Aliquot and store at -20°C. Minimize freezing and thawing.

### Applications Tested

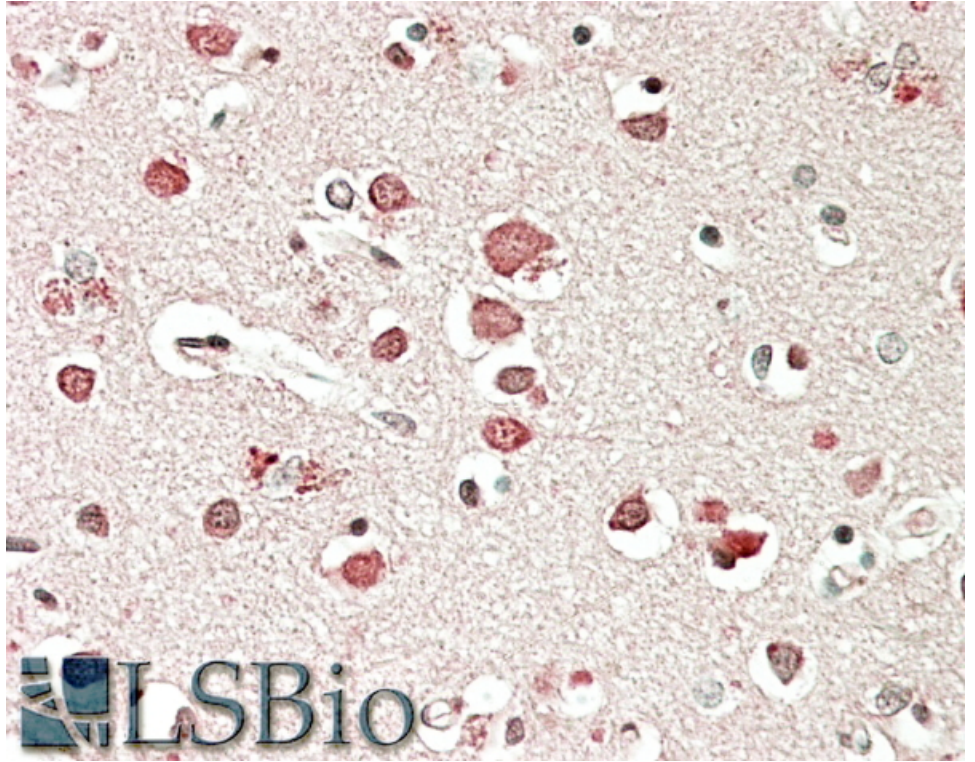
**Peptide ELISA:** antibody detection limit dilution 1:4000.

**IHC:** In paraffin embedded Human Cerebral Cortex shows textured cytoplasm staining in the neuronal cell bodies. Recommended concentration: 5-10µg/ml.

### Species Reactivity

**Tested:** Human

**Expected from sequence similarity:** Human, Mouse, Dog, Cow



EB06147 (5µg/ml) staining of paraffin embedded Human Cerebral Cortex. Steamed antigen retrieval with citrate buffer pH 6, AP-staining.