



UK Office

Everest Biotech Ltd

Cherwell Innovation Centre
77 Heyford Park
Upper Heyford
Oxfordshire
OX25 5HD
UK

Enquiries:

info@everestbiotech.com

Sales:

sales@everestbiotech.com

Tech support:

support@everestbiotech.com

Tel: +44 (0)1869 238326

Fax: +44 (0)1869 238327

US Office

Everest Biotech c/o Abcore

405 Maple Street, Suite A106
Ramona,
CA 92065
USA

Inquiries:

info@everestbiotech.com

Sales:

usasales@everestbiotech.com

Tech support:

support@everestbiotech.com

Tel: 888-320-4628 (toll-free)

Fax: 888-841-9041

www.everestbiotech.com

**Research Use Only. Not for
diagnostic or therapeutic use.**

EB10984 - Goat Anti-Neurofascin (aa877-890) Antibody

Size: 100µg specific antibody in 200µl



Target Protein

Principal Names: NFASC, neurofascin, DKFZp686P2250, FLJ46866, KIAA0756, NF, NRCAML, OTTHUMP00000065316, OTTHUMP00000065319, OTTHUMP00000065323, OTTHUMP00000065324, neurofascin homolog

Official Symbol: NFASC

Accession Number(s): NP_001005388.2; NP_001153803.1; NP_001153804.1; NP_055905.2;

Human GeneID(s): [23114](#)

Non-Human GeneID(s): 269116 (mouse), 116690 (rat)

Important Comments: This antibody is expected to recognize reported isoforms 1, 2, 3 and 4 (NP_001005388.2; NP_001153803.1, NP_001153804.1 and NP_055905.2 resp) .

Immunogen

Peptide with sequence C-NFSPNQTKFTVQRT, from the internal region of the protein sequence according to NP_001005388.2; NP_001153803.1; NP_001153804.1; NP_055905.2;.

Please note the [peptide](#) is available for sale.

Purification and Storage

Purified from goat serum by ammonium sulphate precipitation followed by antigen affinity chromatography using the immunizing peptide.

Supplied at 0.5 mg/ml in Tris saline, 0.02% sodium azide, pH7.3 with 0.5% bovine serum albumin.

Aliquot and store at -20°C. Minimize freezing and thawing.

Applications Tested

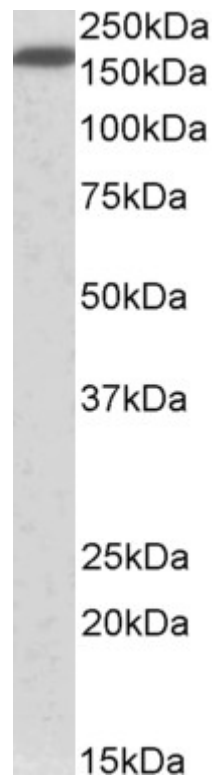
Peptide ELISA: antibody detection limit dilution 1:16000.

Western blot: Approx 170kDa band observed in Human Lung lysates (calculated MW of 138kDa according to NP_001005388.2). The observed molecular weight corresponds to earlier findings in literature with different antibodies (Kirschbaum et al, J Biol Chem. 2009 Oct 16;284(42):28533-42. PMID: 19666467). Recommended concentration: 0.5-2µg/ml. Primary incubation was 1 hour. Preliminary testing was unsuccessful on Mouse and Rat Brain for this particular batch.

Species Reactivity

Tested: Human

Expected from sequence similarity: Human, Mouse, Rat, Dog, Cow



EB10984 (0.5 μ g/ml) staining of Human Lung lysate (35 μ g protein in RIPA buffer). Detected by chemiluminescence.