



UK Office

Everest Biotech Ltd

Cherwell Innovation Centre
77 Heyford Park
Upper Heyford
Oxfordshire
OX25 5HD
UK

Enquiries:

info@everestbiotech.com

Sales:

sales@everestbiotech.com

Tech support:

support@everestbiotech.com

Tel: +44 (0)1869 238326

www.everestbiotech.com

**Research Use Only. Not for
diagnostic or therapeutic use.**

EB07955 - Goat Anti-Neurofibromin 2 (Zebrafish) Antibody

Size: 100µg specific antibody in 200µl



Target Protein

Principal Names: nf2, neurofibromin 2 (bilateral acoustic neuroma), MGC123124, NF2a

Official Symbol: nf2b

Accession Number(s): NP_998116.1

Immunogen

Peptide with sequence C-EKSKHLQDQLK, from the internal region of the protein sequence according to NP_998116.1.

Please note the [peptide](#) is available for sale.

Purification and Storage

Purified from goat serum by ammonium sulphate precipitation followed by antigen affinity chromatography using the immunizing peptide.

Supplied at 0.5 mg/ml in Tris saline, 0.02% sodium azide, pH7.3 with 0.5% bovine serum albumin.

Aliquot and store at -20°C. Minimize freezing and thawing.

Applications Tested

Peptide ELISA: antibody detection limit dilution 1:32000.

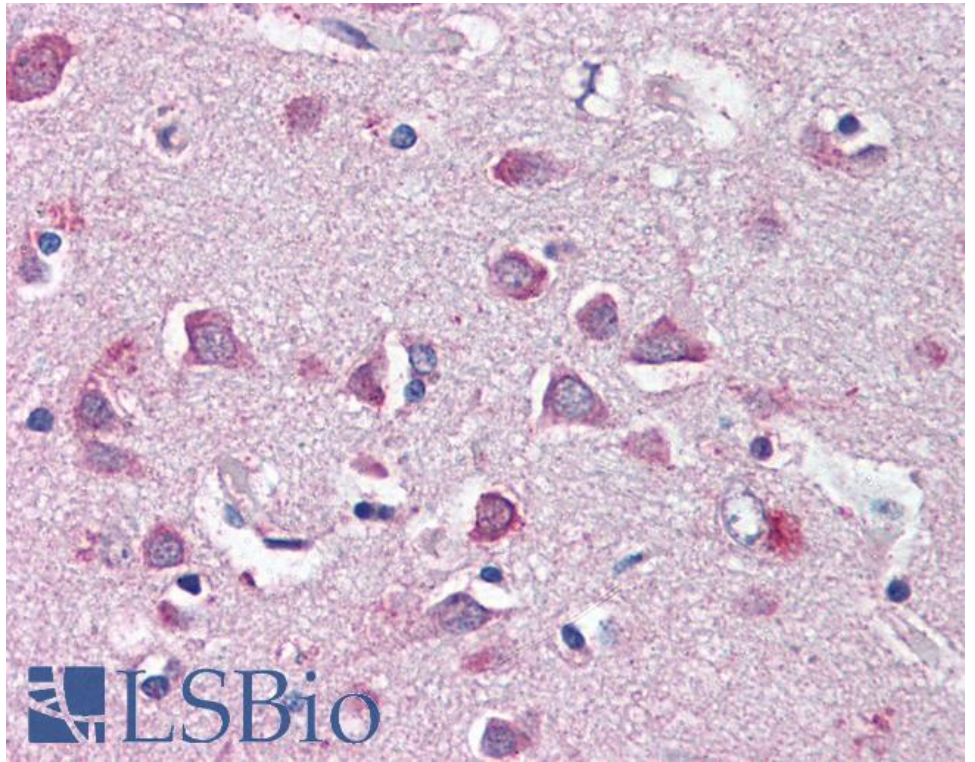
IHC: Paraffin embedded Human Brain (Cortex). Recommended concentration: 5µg/ml.

This product has been successfully used by customers on Formalin/PFA-fixed paraffin-embedded sections of Zebrafish Brain (Cortex).

Species Reactivity

Tested: Human, Zebrafish

Expected from sequence similarity: Zebrafish



EB07955 (5µg/ml) staining of paraffin embedded Human Cortex. Steamed antigen retrieval with citrate buffer pH 6, AP-staining.