



UK Office

Everest Biotech Ltd

Cherwell Innovation Centre
77 Heyford Park
Upper Heyford
Oxfordshire
OX25 5HD
UK

Enquiries:

info@everestbiotech.com

Sales:

sales@everestbiotech.com

Tech support:

support@everestbiotech.com

Tel: +44 (0)1869 238326

Fax: +44 (0)1869 238327

US Office

Everest Biotech c/o Abcore

405 Maple Street, Suite A106
Ramona,
CA 92065
USA

Inquiries:

info@everestbiotech.com

Sales:

usasales@everestbiotech.com

Tech support:

support@everestbiotech.com

Tel: 888-320-4628 (toll-free)

Fax: 888-841-9041

www.everestbiotech.com

**Research Use Only. Not for
diagnostic or therapeutic use.**

EB09686 - Goat Anti-Neurogranin precursor Antibody

Size: 100µg specific antibody in 200µl



Target Protein

Principal Names: NRGN, neurogranin (protein kinase C substrate, RC3), RC3, hng, calmodulin-binding protein, neurogranin, protein kinase C substrate

Official Symbol: NRGN

Accession Number(s): NP_006167.1

Human GeneID(s): [4900](#)

Non-Human GeneID(s): 647011 (mouse)

Important Comments: Reported variants represent identical protein: NP_006167.1, NP_001119653.1

Immunogen

Peptide with sequence C-KIKSGERGRKG, from the internal region of the protein sequence according to NP_006167.1.

Please note the [peptide](#) is available for sale.

Purification and Storage

Purified from goat serum by ammonium sulphate precipitation followed by antigen affinity chromatography using the immunizing peptide.

Supplied at 0.5 mg/ml in Tris saline, 0.02% sodium azide, pH7.3 with 0.5% bovine serum albumin.

Aliquot and store at -20°C. Minimize freezing and thawing.

Applications Tested

Peptide ELISA: antibody detection limit dilution 1:8000.

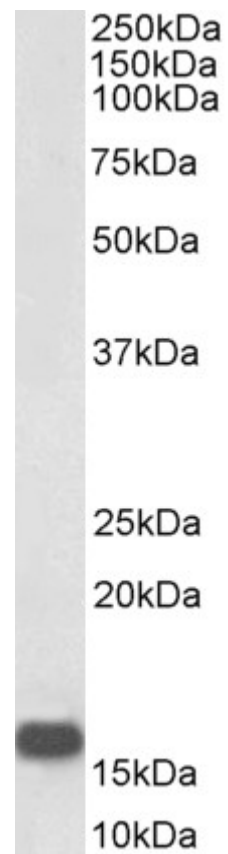
Western blot: Approx 16kDa band observed in Human Brain (Frontal Cortex) lysate (calculated MW of 7.6kDa according to NP_006167.1). The observed molecular weights correspond to earlier findings in literature with different antibodies (Li et al, J Biol Chem. 1999 Jan 15;274(3):1294-300; PMID: 9880498). Recommended concentration: 0.1-0.3µg/ml. Primary incubation was 1 hour. Preliminary testing was unsuccessful on Mouse Brain for this particular batch.

IHC: Paraffin embedded Human Brain (Cortex). Recommended concentration: 5µg/ml.

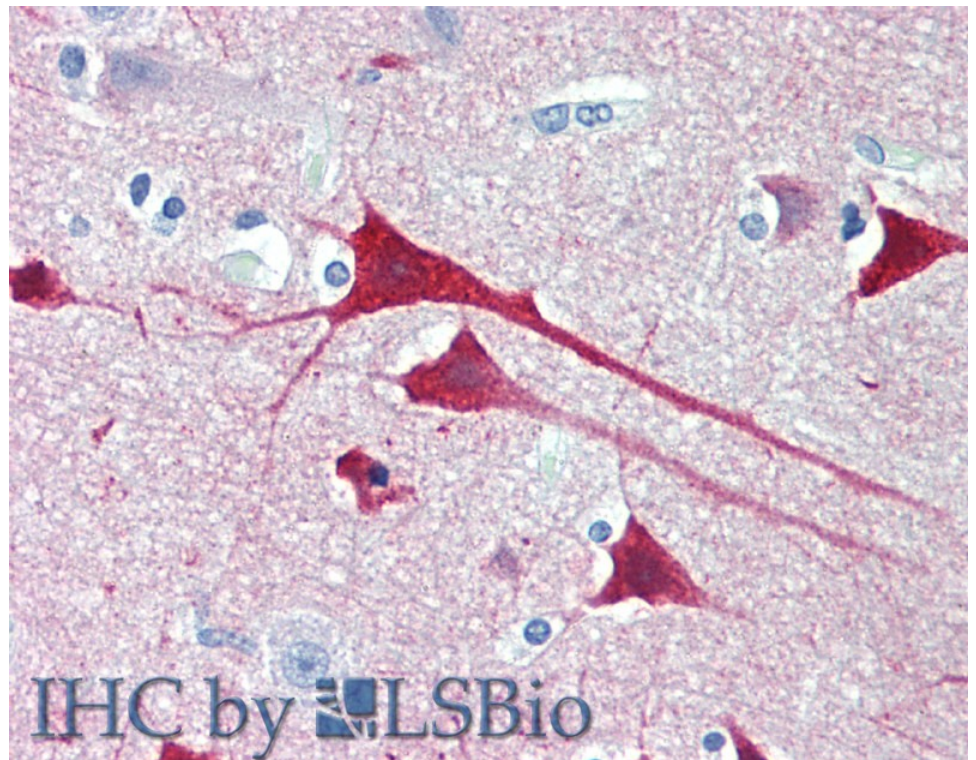
Species Reactivity

Tested: Human

Expected from sequence similarity: Human, Mouse, Dog, Cow



EB09686 (0.1µg/ml) staining of Human Brain (Frontal Cortex) lysate (35µg protein in RIPA buffer). Detected by chemiluminescence.



EB09686 (5µg/ml) staining of paraffin embedded Human Cortex. Steamed antigen retrieval with citrate buffer pH 6, AP-staining.