



UK Office

Everest Biotech Ltd
Cherwell Innovation Centre
77 Heyford Park
Upper Heyford
Oxfordshire
OX25 5HD
UK

Enquiries:

info@everestbiotech.com

Sales:

sales@everestbiotech.com

Tech support:

support@everestbiotech.com

Tel: +44 (0)1869 238326

www.everestbiotech.com

**Research Use Only. Not for
diagnostic or therapeutic use.**

EB12221 - Goat Anti-neuronal pentraxin 1 Antibody

Size: 100µg specific antibody in 200µl



Target Protein

Principal Names: NPTX1, neuronal pentraxin I, NP1, NP-I, neuronal pentraxin-1

Official Symbol: NPTX1

Accession Number(s): NP_002513.2

Human GeneID(s): [4884](#)

Immunogen

Peptide with sequence C-ERVKIETALTSLHQR, from the internal region of the protein sequence according to NP_002513.2.

Please note the [peptide](#) is available for sale.

Purification and Storage

Purified from goat serum by ammonium sulphate precipitation followed by antigen affinity chromatography using the immunizing peptide.

Supplied at 0.5 mg/ml in Tris saline, 0.02% sodium azide, pH7.3 with 0.5% bovine serum albumin.

Aliquot and store at -20°C. Minimize freezing and thawing.

Applications Tested

Peptide ELISA: antibody detection limit dilution 1:128000.

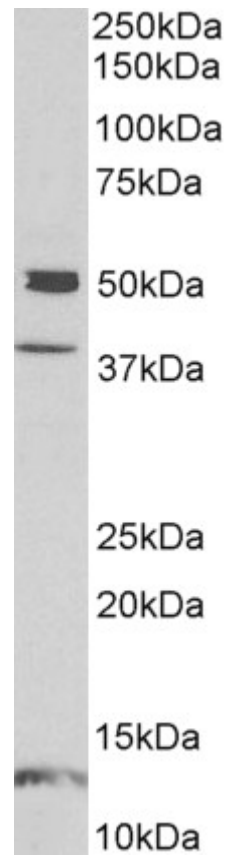
Western blot: Approx 50kDa band observed in Human Brain (Amygdala and Frontal Cortex) lysates (calculated MW of 47.1kDa according to NP_002513.2). Recommended concentration: 1-3µg/ml. Primary incubation was 1 hour. Additional bands of unknown identity was also consistently observed at 38 and 14kDa. These bands were successfully blocked by incubation with the immunizing peptide.

IHC: Paraffin embedded Human Brain (Cerebellum). Recommended concentration: 5µg/ml.

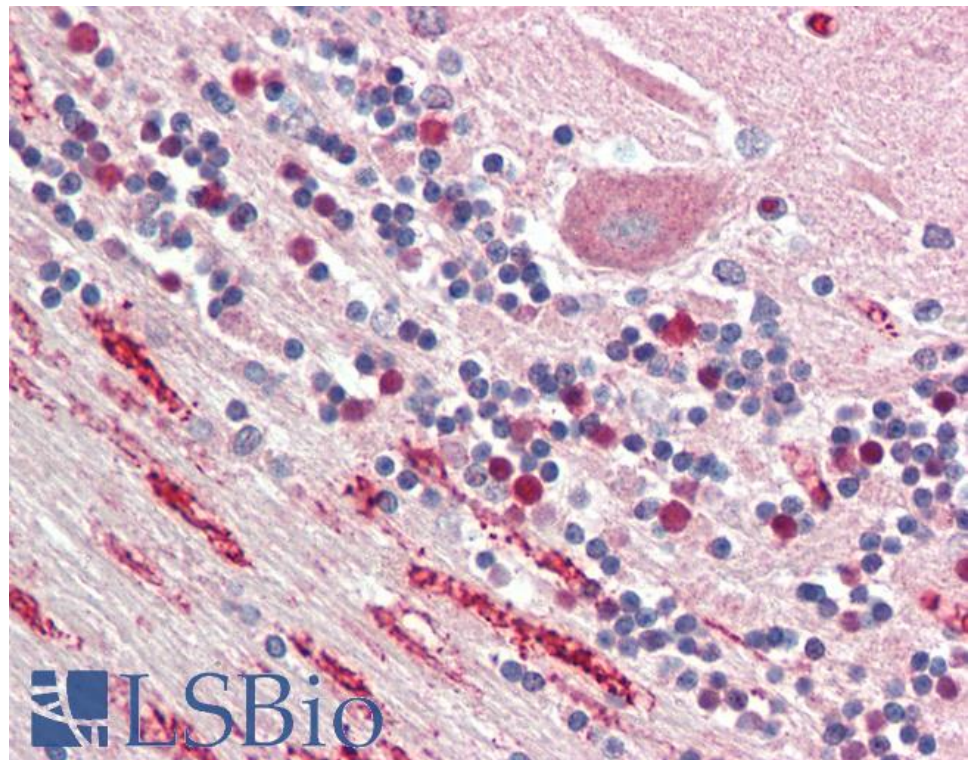
Species Reactivity

Tested: Human

Expected from sequence similarity: Human



EB12221 (1 μ g/ml) staining of Human Frontal Cortex lysate (35 μ g protein in RIPA buffer). Detected by chemiluminescence.



EB12221 (5 μ g/ml) staining of paraffin embedded Human Cerebellum. Steamed antigen retrieval with citrate buffer pH 6, AP-staining.