



UK Office

Everest Biotech Ltd

Cherwell Innovation Centre
77 Heyford Park
Upper Heyford
Oxfordshire
OX25 5HD
UK

Enquiries:

info@everestbiotech.com

Sales:

sales@everestbiotech.com

Tech support:

support@everestbiotech.com

Tel: +44 (0)1869 238326

www.everestbiotech.com

**Research Use Only. Not for
diagnostic or therapeutic use.**

EB08482 - Goat Anti-Neurotrophin 5 / NT4 Antibody

Size: 100µg specific antibody in 200µl



Target Protein

Principal Names: NT4, neurotrophin 5 (neurotrophin 4/5), NTF5, NT-4/5, NT5, NTF4, neurotrophic factor 4, neurotrophic factor 5, neurotrophin 4, neurotrophin 5

Official Symbol: NTF5

Accession Number(s): NP_006170.1

Human GeneID(s): [4909](#)

Immunogen

Peptide with sequence FETRCKADNAEEG, from the internal region of the protein sequence according to NP_006170.1.

Please note the [peptide](#) is available for sale.

Purification and Storage

Purified from goat serum by ammonium sulphate precipitation followed by antigen affinity chromatography using the immunizing peptide.

Supplied at 0.5 mg/ml in Tris saline, 0.02% sodium azide, pH7.3 with 0.5% bovine serum albumin.

Aliquot and store at -20°C. Minimize freezing and thawing.

Applications Tested

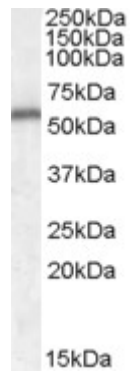
Peptide ELISA: antibody detection limit dilution 1:32000.

Western blot: Approx 55kDa band observed in Human Brain (Cerebellum) lysates (calculated MW of 22.4kDa according to NP_006170.1). The observed molecular weight corresponds to earlier findings in literature with different antibodies (Ghinelli et al, Invest Ophthalmol Vis Sci. 2003 Aug;44(8):3352-7; PMID: 12882781). Recommended concentration: 0.1-0.3µg/ml.

Species Reactivity

Tested: Human

Expected from sequence similarity: Human



EB08482 (0.1 μ g/ml) staining of Human Cerebellum lysate (35 μ g protein in RIPA buffer). Primary incubation was 1 hour. Detected by chemiluminescence.