



UK Office

Everest Biotech Ltd

Cherwell Innovation Centre
77 Heyford Park
Upper Heyford
Oxfordshire
OX25 5HD
UK

Enquiries:

info@everestbiotech.com

Sales:

sales@everestbiotech.com

Tech support:

support@everestbiotech.com

Tel: +44 (0)1869 238326

Fax: +44 (0)1869 238327

US Office

Everest Biotech c/o Abcore

405 Maple Street, Suite A106
Ramona,
CA 92065
USA

Inquiries:

info@everestbiotech.com

Sales:

usasales@everestbiotech.com

Tech support:

support@everestbiotech.com

Tel: 888-320-4628 (toll-free)

Fax: 888-841-9041

www.everestbiotech.com

**Research Use Only. Not for
diagnostic or therapeutic use.**

EB09503 - Goat Anti-NFATC2 / NFAT1 Antibody

Size: 100µg specific antibody in 200µl



Target Protein

Principal Names: NFATC2, nuclear factor of activated T-cells, cytoplasmic, calcineurin-dependent 2, KIAA0611, NFAT1, NFATP, NFAT pre-existing subunit, NFAT transcription complex, preexisting component, OTTHUMP00000031291, T cell transcription factor NFAT1, nuclear factor of activated T-cells, cytoplasmic 2, nuclear factor of activated T-cells, preexisting component, preexisting nuclear factor of activated T-cells 2

Official Symbol: NFATC2

Accession Number(s): NP_036472.2; NP_775114.1; NP_001129493.1

Human GeneID(s): [4773](#)

Non-Human GeneID(s): 140488 (mouse), 312320 (rat)

Important Comments: This antibody is expected to recognize all three reported isoforms (NP_036472.2; NP_775114.1; NP_001129493.1).

Immunogen

Peptide with sequence C-QQFRTGLSSPDARYQ, from the internal region of the protein sequence according to NP_036472.2; NP_775114.1; NP_001129493.1.

Please note the [peptide](#) is available for sale.

Purification and Storage

Purified from goat serum by ammonium sulphate precipitation followed by antigen affinity chromatography using the immunizing peptide.

Supplied at 0.5 mg/ml in Tris saline, 0.02% sodium azide, pH7.3 with 0.5% bovine serum albumin.

Aliquot and store at -20°C. Minimize freezing and thawing.

Applications Tested

Peptide ELISA: antibody detection limit dilution 1:64000.

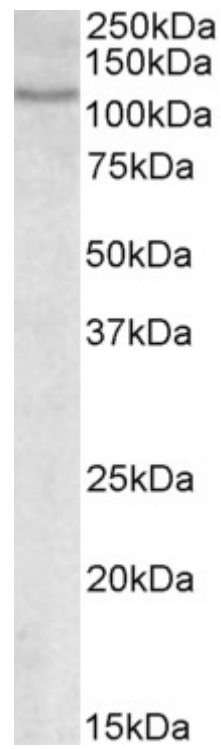
Western blot: Approx 110kDa band observed in Human lysates of cell line MOLT4 (calculated MW of 100kDa according to NP_775114.1). Recommended concentration: 0.3-1µg/ml.

IHC: In paraffin embedded Human Spleen shows nuclear membrane and weaker cytoplasm staining in select splenocytes. Recommended concentration, 3-6µg/ml.

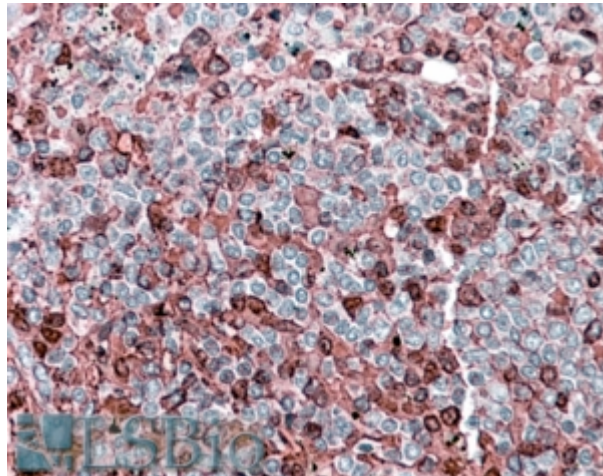
Species Reactivity

Tested: Human

Expected from sequence similarity: Human, Mouse, Rat, Dog, Cow



EB09503 (0.3 μ g/ml) staining of MOLT4 lysate (35 μ g protein in RIPA buffer). Primary incubation was 1 hour.
Detected by chemiluminescence.



EB09503 (3.8 μ g/ml) staining of paraffin embedded Human Spleen. Steamed antigen retrieval with citrate buffer pH 6, AP-staining.