



UK Office

Everest Biotech Ltd

Cherwell Innovation Centre
77 Heyford Park
Upper Heyford
Oxfordshire
OX25 5HD
UK

Enquiries:

info@everestbiotech.com

Sales:

sales@everestbiotech.com

Tech support:

support@everestbiotech.com

Tel: +44 (0)1869 238326

Fax: +44 (0)1869 238327

US Office

Everest Biotech c/o Abcore

405 Maple Street, Suite A106
Ramona,
CA 92065
USA

Inquiries:

info@everestbiotech.com

Sales:

usasales@everestbiotech.com

Tech support:

support@everestbiotech.com

Tel: 888-320-4628 (toll-free)

Fax: 888-841-9041

www.everestbiotech.com

**Research Use Only. Not for
diagnostic or therapeutic use.**

EB05562 - Goat Anti-NFATC4 Antibody

Size: 100µg specific antibody in 200µl



Target Protein

Principal Names: NFATC4, NFAT3, NF-ATc4, nuclear factor of activated T-cells, cytoplasmic, calcineurin-dependent 4, T cell transcription factor NFAT3, nuclear factor of activated T-cells, cytoplasmic 4

Official Symbol: NFATC4

Accession Number(s): NP_004545.2; NP_001185894.1; NP_001185895.1; NP_001185896.1

Human GeneID(s): [4776](#)

Important Comments: This antibody is expected to recognise isoform 2, 3, 4 and 5 (NP_004545.2; NP_001185894.1; NP_001185895.1; NP_001185896.1 respectively).

Immunogen

Peptide with sequence C-SGFPAPPGEPPA, from the C Terminus of the protein sequence according to NP_004545.2; NP_001185894.1; NP_001185895.1; NP_001185896.1.

Please note the [peptide](#) is available for sale.

Purification and Storage

Purified from goat serum by ammonium sulphate precipitation followed by antigen affinity chromatography using the immunizing peptide.

Supplied at 0.5 mg/ml in Tris saline, 0.02% sodium azide, pH7.3 with 0.5% bovine serum albumin.

Aliquot and store at -20°C. Minimize freezing and thawing.

Applications Tested

Peptide ELISA: antibody detection limit dilution 1:16000.

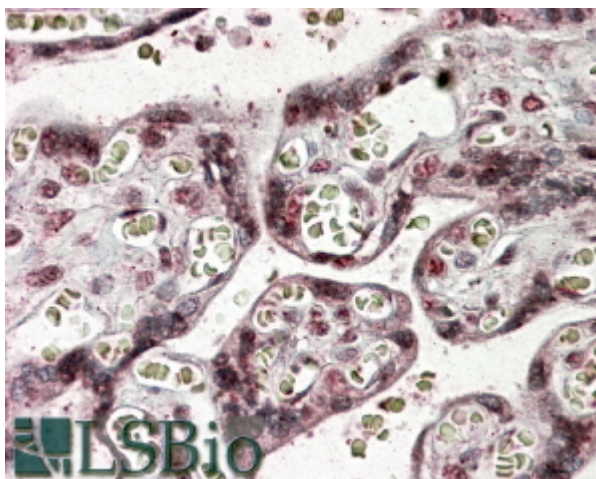
Western blot: No signal obtained yet but low background observed in MOLT-4, Jurkat, A431, HeLa, Human Brain and Human Heart lysates at upto 2µg/ml.

IHC: In paraffin embedded Human Placenta shows weak nuclear staining in trophoblasts.. Recommended concentration, 2.5-3.8µg/ml.

Species Reactivity

Tested: Human

Expected from sequence similarity: Human, Mouse, Rat, Dog, Pig



EB05562 (3.8µg/ml) staining of paraffin embedded Human Placenta. Steamed antigen retrieval with citrate buffer pH 6, AP-staining.