



UK Office

Everest Biotech Ltd

Cherwell Innovation Centre
77 Heyford Park
Upper Heyford
Oxfordshire
OX25 5HD
UK

Enquiries:

info@everestbiotech.com

Sales:

sales@everestbiotech.com

Tech support:

support@everestbiotech.com

Tel: +44 (0)1869 238326

Fax: +44 (0)1869 238327

US Office

Everest Biotech c/o Abcore

405 Maple Street, Suite A106
Ramona,
CA 92065
USA

Inquiries:

info@everestbiotech.com

Sales:

usasales@everestbiotech.com

Tech support:

support@everestbiotech.com

Tel: 888-320-4628 (toll-free)

Fax: 888-841-9041

www.everestbiotech.com

**Research Use Only. Not for
diagnostic or therapeutic use.**

EB06775 - Goat Anti-NGFR Antibody

Size: 100µg specific antibody in 200µl



Target Protein

Principal Names: NGFR, nerve growth factor receptor (TNFR superfamily, member 16), HGNC:7809, TNFRSF16, p75(NTR), p75NTR, CD271, low affinity nerve growth factor receptor, low-affinity nerve growth factor receptor, Gp80-LNGFR, nerve growth factor receptor

Official Symbol: NGFR

Accession Number(s): NP_002498.1

Human GeneID(s): [4804](#)

Immunogen

Peptide with sequence C-AKREEVEKLLNG, from the internal region of the protein sequence according to NP_002498.1.

Please note the [peptide](#) is available for sale.

Purification and Storage

Purified from goat serum by ammonium sulphate precipitation followed by antigen affinity chromatography using the immunizing peptide.

Supplied at 0.5 mg/ml in Tris saline, 0.02% sodium azide, pH7.3 with 0.5% bovine serum albumin.

Aliquot and store at -20°C. Minimize freezing and thawing.

Applications Tested

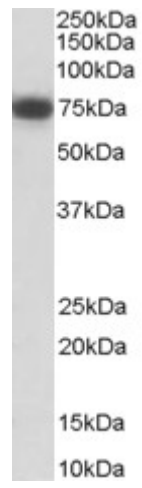
Peptide ELISA: antibody detection limit dilution 1:32000.

Western blot: Approx 75kDa band observed in Human Duodenum and Human Heart lysates (calculated MW of 45.2kDa according to NP_4804). The observed molecular weight corresponds to earlier findings in literature with different antibodies (Nykjaer et al, Curr Opin Neurobiol. 2005 Feb;15(1):49-57). Recommended concentration: 0.3-1µg/ml.

Species Reactivity

Tested: Human

Expected from sequence similarity: Human, Mouse, Rat, Dog, Cow



EB06775 (0.3 μ g/ml) staining of Human Heart lysate (35 μ g protein in RIPA buffer). Primary incubation was 1 hour. Detected by chemiluminescence.