



UK Office

Everest Biotech Ltd

Cherwell Innovation Centre
77 Heyford Park
Upper Heyford
Oxfordshire
OX25 5HD
UK

Enquiries:

info@everestbiotech.com

Sales:

sales@everestbiotech.com

Tech support:

support@everestbiotech.com

Tel: +44 (0)1869 238326

Fax: +44 (0)1869 238327

US Office

Everest Biotech c/o Abcore

405 Maple Street, Suite A106
Ramona,
CA 92065
USA

Inquiries:

info@everestbiotech.com

Sales:

usasales@everestbiotech.com

Tech support:

support@everestbiotech.com

Tel: 888-320-4628 (toll-free)

Fax: 888-841-9041

www.everestbiotech.com

**Research Use Only. Not for
diagnostic or therapeutic use.**

EB06970 - Goat Anti-NHERF2 (isoform b, e) Antibody

Size: 100µg specific antibody in 200µl



Target Protein

Principal Names: SLC9A3R2, solute carrier family 9 (sodium/hydrogen exchanger), isoform 3 regulator 2, HGNC:11076, E3KARP, NHE3RF2, NHERF-2, NHERF2, OCTS2, SIP-1, SIP1, TKA-1, sodium/hydrogen exchanger, solute carrier family 9 (sodium/hydrogen exchanger), isoform 3 regulatory factor 2, solute carrier family 9 isoform 3 regulator 2, solute carrier family 9 (sodium/hydrogen exchanger), member 3 regulator 2, MGC104639, solute carrier family 9 (sodium/hydrogen exchanger), isoform 3 regulatory factor 2

Official Symbol: SLC9A3R2

Accession Number(s): NP_004776.3; NP_001239005.1

Human GenelD(s): [9351](#)

Important Comments: This antibody is expected to recognize isoforms b and e (NP_004776.3 and NP_001239005.1) only.

Immunogen

Peptide with sequence C-DLPGSDKDTEESGLH, from the internal region of the protein sequence according to NP_004776.3; NP_001239005.1.

Please note the [peptide](#) is available for sale.

Purification and Storage

Purified from goat serum by ammonium sulphate precipitation followed by antigen affinity chromatography using the immunizing peptide.

Supplied at 0.5 mg/ml in Tris saline, 0.02% sodium azide, pH7.3 with 0.5% bovine serum albumin.

Aliquot and store at -20°C. Minimize freezing and thawing.

Applications Tested

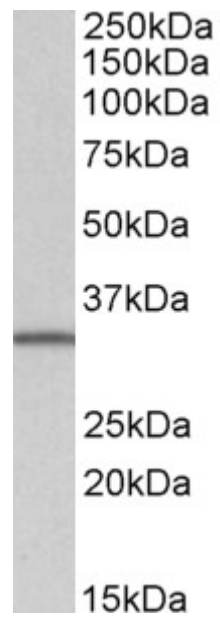
Peptide ELISA: antibody detection limit dilution 1:32000.

Western blot: Approx 35kDa band observed in lysates of cell lines HEK293 and Daudi (calculated MW of 36.2kDa according to NP_004776.3). Recommended concentration: 1-3µg/ml.

Species Reactivity

Tested: Human

Expected from sequence similarity: Human



EB06970 (1 μ g/ml) staining of Daudi lysate (35 μ g protein in RIPA buffer). Primary incubation was 1 hour.
Detected by chemiluminescence.