



UK Office

Everest Biotech Ltd

Cherwell Innovation Centre
77 Heyford Park
Upper Heyford
Oxfordshire
OX25 5HD
UK

Enquiries:

info@everestbiotech.com

Sales:

sales@everestbiotech.com

Tech support:

support@everestbiotech.com

Tel: +44 (0)1869 238326

www.everestbiotech.com

**Research Use Only. Not for
diagnostic or therapeutic use.**

EB10055 - Goat Anti-NIPBL (aa889-902) Antibody

Size: 100µg specific antibody in 200µl



Target Protein

Principal Names: CDLS, CDLS1, DKFZp434L1319, FLJ11203, FLJ12597, FLJ13354, FLJ13648, FLJ44854, IDN3, IDN3-B, Nipped-B homolog (Drosophila), nipped-B-like, Scc2, SCC2 homolog, sister chromatid cohesion 2 homolog, NIPBL

Official Symbol: NIPBL

Accession Number(s): NP_597677.2; NP_056199.2

Human GeneID(s): [25836](#)

Non-Human GeneID(s): 71175 (mouse), 294787 (rat)

Important Comments: This antibody is expected to recognize both reported isoforms (NP_597677.2; NP_056199.2).

Immunogen

Peptide with sequence C-RPDSPRVKQGDSNK, from the internal region of the protein sequence according to NP_597677.2; NP_056199.2.

Please note the [peptide](#) is available for sale.

Purification and Storage

Purified from goat serum by ammonium sulphate precipitation followed by antigen affinity chromatography using the immunizing peptide.

Supplied at 0.5 mg/ml in Tris saline, 0.02% sodium azide, pH7.3 with 0.5% bovine serum albumin.

Aliquot and store at -20°C. Minimize freezing and thawing.

Applications Tested

Peptide ELISA: antibody detection limit dilution 1:32000.

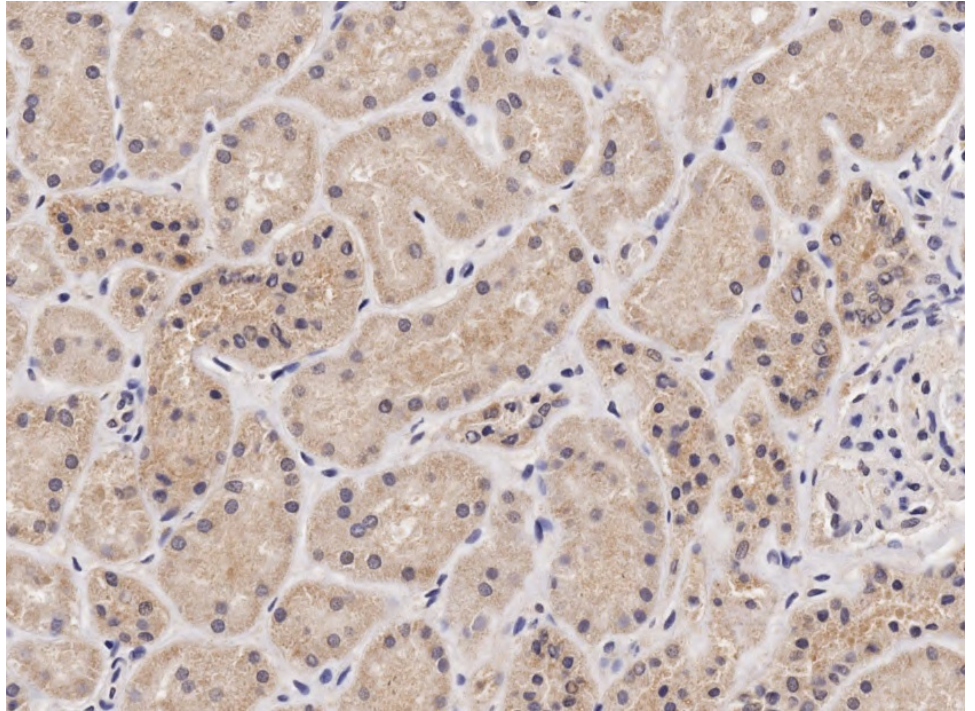
IHC: Paraffin embedded Human Kidney. Recommended concentration: 2µg/ml.

Immunofluorescence: Strong expression of the protein seen in the cytoplasm and nuclei of HeLa cells. Recommended concentration: 10µg/ml.

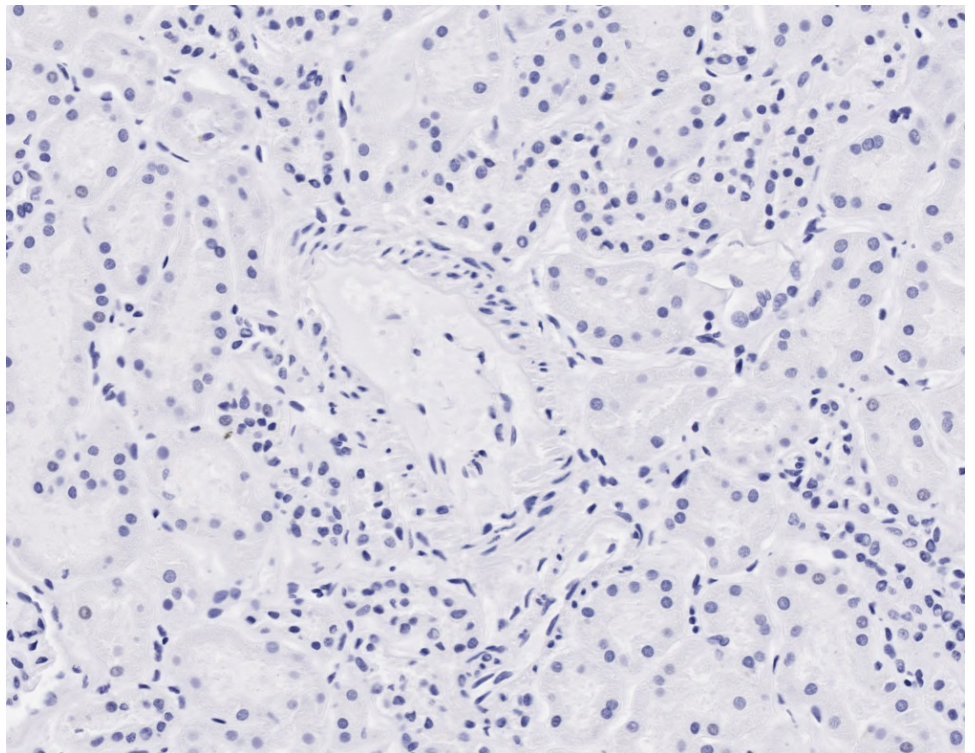
Species Reactivity

Tested: Human

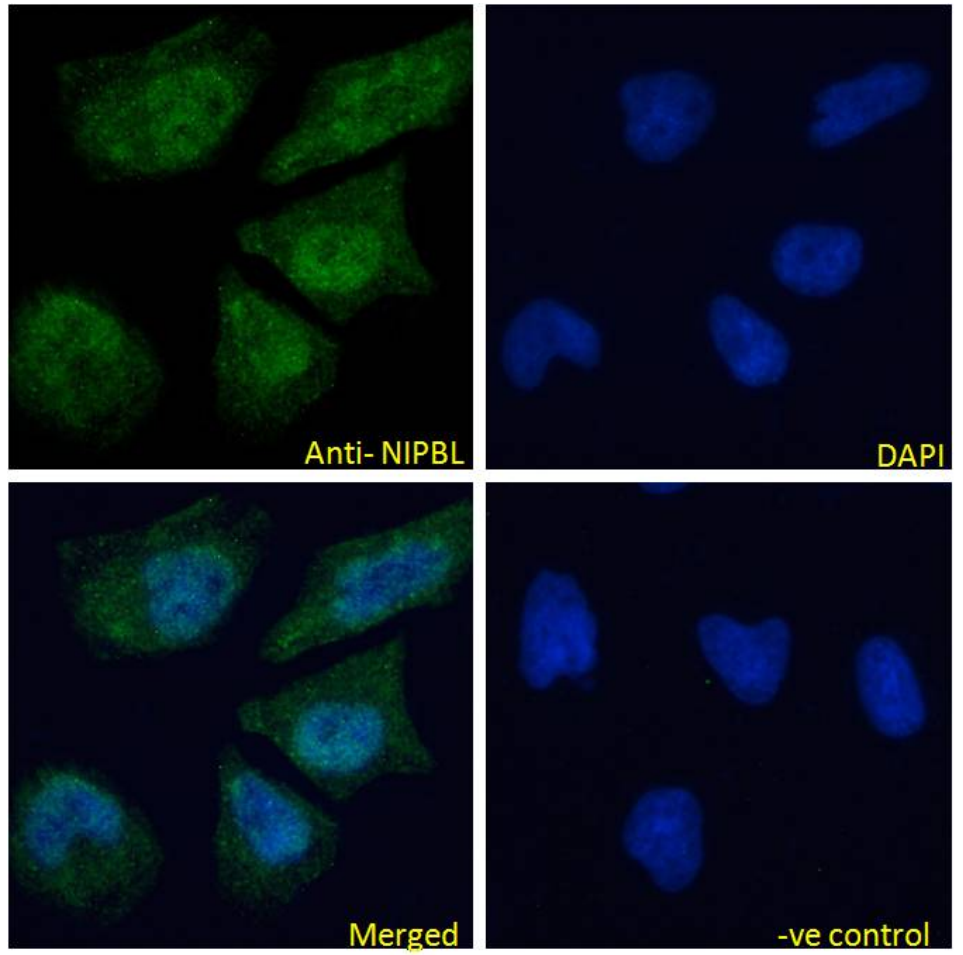
Expected from sequence similarity: Human, Mouse, Rat, Dog, Cow



EB10055 (2 μ g/ml) staining of paraffin embedded Human Kidney. Microwaved antigen retrieval with citrate buffer pH 6, HRP-staining.



EB10055 Negative Control showing staining of paraffin embedded Human Cerebellum, with no primary antibody.



EB10055 Immunofluorescence analysis of paraformaldehyde fixed HeLa cells, permeabilized with 0.15% Triton. Primary incubation 1hr (10ug/ml) followed by Alexa Fluor 488 secondary antibody (4ug/ml), showing nuclear and cytoplasmic staining. The nuclear stain is DAPI (blue). Negative control: Unimmunized goat IgG (10ug/ml) followed by Alexa Fluor 488 secondary antibody (4ug/ml).