



International Office

Everest Biotech Ltd

Vector Laboratories, Inc.
6737 Mowry Ave
Newark, CA 94560
United States

Customer Service:

customerservice@vectorlabs.com

Technical Service:

technical@vectorlabs.com

Tel: +1 (800) 227-6666

www.everestbiotech.com

**Research Use Only. Not for
diagnostic or therapeutic use.**

EB12894 - Goat Anti-NLRP5 (C-terminus) Antibody

Size: 100µg specific antibody in 200µl



Target Protein

Principal Names: NLRP5, NLR family, pyrin domain containing 5, MATER, NALP5, PAN11, PYPAF8, CLR19.8

Official Symbol: NLRP5

Accession Number(s): NP_703148.4

Human GeneID(s): [126206](#)

Immunogen

Peptide with sequence C-DGSWHSFDEDDR, from the C-Terminus of the protein sequence according to NP_703148.4.

Please note the [peptide](#) is available for sale.

Purification and Storage

Purified from goat serum by ammonium sulphate precipitation followed by antigen affinity chromatography using the immunizing peptide.

Supplied at 0.5 mg/ml in Tris saline, 0.02% sodium azide, pH7.3 with 0.5% bovine serum albumin.

Aliquot and store at -20°C. Minimize freezing and thawing.

Applications Tested

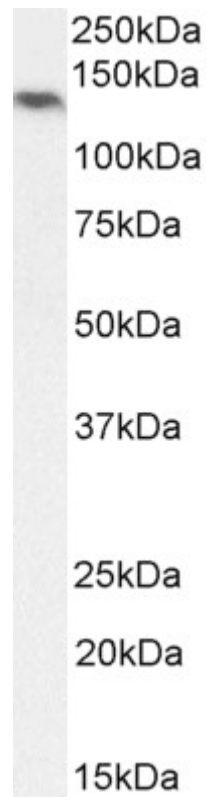
Peptide ELISA: antibody detection limit dilution 1:128000.

Western blot: Approx 130kDa band observed in Human Ovary lysates (calculated MW of 134kDa according to NP_703148.4). Recommended concentration: 1-3µg/ml.

Species Reactivity

Tested: Human

Expected from sequence similarity: Human



EB12894 (2 μ g/ml) staining of Human Ovary lysate (35 μ g protein in RIPA buffer). Primary incubation was 1 hour.
Detected by chemiluminescence.