



## UK Office

### Everest Biotech Ltd

Cherwell Innovation Centre  
77 Heyford Park  
Upper Heyford  
Oxfordshire  
OX25 5HD  
UK

Enquiries:

[info@everestbiotech.com](mailto:info@everestbiotech.com)

Sales:

[sales@everestbiotech.com](mailto:sales@everestbiotech.com)

Tech support:

[support@everestbiotech.com](mailto:support@everestbiotech.com)

Tel: +44 (0)1869 238326

Fax: +44 (0)1869 238327

## US Office

### Everest Biotech c/o Abcore

405 Maple Street, Suite A106  
Ramona,  
CA 92065  
USA

Inquiries:

[info@everestbiotech.com](mailto:info@everestbiotech.com)

Sales:

[usasales@everestbiotech.com](mailto:usasales@everestbiotech.com)

Tech support:

[support@everestbiotech.com](mailto:support@everestbiotech.com)

Tel: 888-320-4628 (toll-free)

Fax: 888-841-9041

[www.everestbiotech.com](http://www.everestbiotech.com)

**Research Use Only. Not for  
diagnostic or therapeutic use.**

## EB11023 - Goat Anti-NMNAT3 (aa149-162) Antibody

Size: 100µg specific antibody in 200µl



### Target Protein

**Principal Names:** NMNAT3, nicotinamide nucleotide adenylyltransferase 3, PNAT3, NMN adenylyltransferase 3, NaMN adenylyltransferase 3, nicotinamide mononucleotide adenylyltransferase 3, nicotinate-nucleotide adenylyltransferase 3, pyridine nucleotide adenylyltransferase 3, NaMN adenylyltransferase 3, nicotinamide mononucleotide adenylyltransferase 3, nicotinamide nucleotide adenylyltransferase 3, nicotinate-nucleotide adenylyltransferase 3, NMN adenylyltransferase 3, PNAT3, pyridine nucleotide adenylyltransferase 3, NMNAT3

**Official Symbol:** NMNAT3

**Accession Number(s):** NP\_835471.1; NP\_001186976.1; NP\_001307439.1; NP\_001307440.1; NP\_001307442.1

**Human GeneID(s):** [349565](#)

**Important Comments:** This antibody is expected to recognize all reported isoforms

### Immunogen

Peptide with sequence C-QHNIHLAKEPVQNE, from the internal region of the protein sequence according to NP\_835471.1; NP\_001186976.1; NP\_001307439.1; NP\_001307440.1; NP\_001307442.1.

Please note the [peptide](#) is available for sale.

### Purification and Storage

Purified from goat serum by ammonium sulphate precipitation followed by antigen affinity chromatography using the immunizing peptide.

Supplied at 0.5 mg/ml in Tris saline, 0.02% sodium azide, pH7.3 with 0.5% bovine serum albumin.

Aliquot and store at -20°C. Minimize freezing and thawing.

### Applications Tested

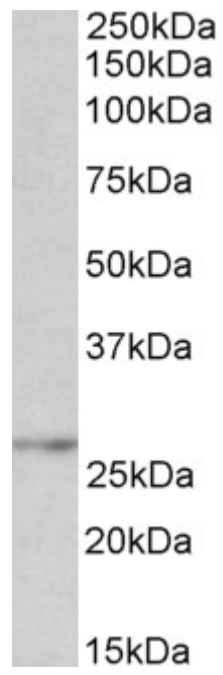
**Peptide ELISA:** antibody detection limit dilution 1:32000.

**Western blot:** Approx 26kDa band observed in Human Kidney lysates (calculated MW of 24.1kDa according to NP\_835471.1). Recommended concentration: 0.1-0.3µg/ml.

### Species Reactivity

**Tested:** Human

**Expected from sequence similarity:** Human, Dog



EB11023 (0.1µg/ml) staining of Human Kidney lysate (35µg protein in RIPA buffer). Primary incubation was 1 hour. Detected by chemiluminescence.