

International Office

Everest Biotech Ltd

Vector Laboratories, Inc.
6737 Mowry Ave
Newark, CA 94560
United States

Customer Service:

customerservice@vectorlabs.com

Technical Service:

technical@vectorlabs.com

Tel: +1 (800) 227-6666

www.everestbiotech.com

**Research Use Only. Not for
diagnostic or therapeutic use.**

EB11024 - Goat Anti-Nmnat3 (mouse) Antibody

Size: 100µg specific antibody in 200µl



Target Protein

Principal Names: Nmnat3, nicotinamide nucleotide adenylyltransferase 3, 4933408N02Rik, MGC102340, PNAT3, NMN adenylyltransferase 3, OTTMUSP00000025890, OTTMUSP00000025891, naMN adenylyltransferase 1, nicotinamide mononucleotide adenylyltransferase 3, nicotinate-nucleotide adenylyltransferase 1, 4933408N02Rik, MGC102340, naMN adenylyltransferase 1, nicotinamide mononucleotide adenylyltransferase 3, nicotinamide nucleotide adenylyltransferase 3, nicotinate-nucleotide adenylyltransferase 1, NMN adenylyltransferase 3, OTTMUSP00000025890, OTTMUSP00000025891, PNAT3, Nmnat3

Official Symbol: Nmnat3

Accession Number(s): NP_653116.1

Non-Human GeneID(s): 74080 (mouse)

Important Comments: This antibody is expected to recognize both reported isoforms (NP_835471.1; NP_001186976.1).

Immunogen

Peptide with sequence C-KALGQGQSVKYLPE, from the internal region of the protein sequence according to NP_653116.1.

Please note the [peptide](#) is available for sale.

Purification and Storage

Purified from goat serum by ammonium sulphate precipitation followed by antigen affinity chromatography using the immunizing peptide.

Supplied at 0.5 mg/ml in Tris saline, 0.02% sodium azide, pH7.3 with 0.5% bovine serum albumin.

Aliquot and store at -20°C. Minimize freezing and thawing.

Applications Tested

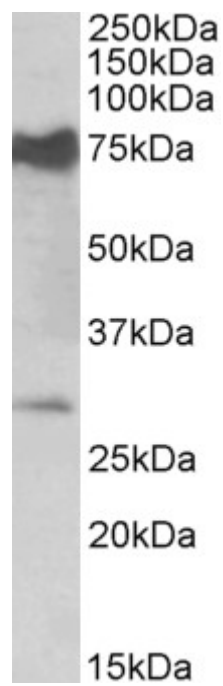
Peptide ELISA: antibody detection limit dilution 1:64000.

Western blot: Approx 28kDa band observed in Mouse Heart lysates (calculated MW of 27.7kDa according to NP_653116.1). Recommended concentration: 0.5-2µg/ml. An additional strong band of unknown identity was also consistently observed at 75kDa. This band was successfully blocked by incubation with the immunizing peptide. We would appreciate any feedback from people in the field - have any such results been reported with other antibodies/lysates? Have any further splice variants/modified forms been reported?

Species Reactivity

Tested: Mouse

Expected from sequence similarity: Mouse



EB11024 (0.5 μ g/ml) staining of Mouse Heart lysate (35 μ g protein in RIPA buffer). Primary incubation was 1 hour.
Detected by chemiluminescence.