



International Office

Everest Biotech Ltd

Vector Laboratories, Inc.
6737 Mowry Ave
Newark, CA 94560
United States

Customer Service:

customerservice@vectorlabs.com

Technical Service:

technical@vectorlabs.com

Tel: +1 (800) 227-6666

www.everestbiotech.com

**Research Use Only. Not for
diagnostic or therapeutic use.**

EB08091 - Goat Anti-NODAL Antibody

Size: 100µg specific antibody in 200µl



Target Protein

Principal Names: NODAL, nodal growth differentiation factor, HTX5, ,

Official Symbol: NODAL

Accession Number(s): NP_060525.2

Human GeneID(s): [4838](#)

Immunogen

Peptide with sequence DRSQLCRKVKFQ, from the internal region of the protein sequence according to NP_060525.2.

Please note the [peptide](#) is available for sale.

Purification and Storage

Purified from goat serum by ammonium sulphate precipitation followed by antigen affinity chromatography using the immunizing peptide.

Supplied at 0.5 mg/ml in Tris saline, 0.02% sodium azide, pH7.3 with 0.5% bovine serum albumin.

Aliquot and store at -20°C. Minimize freezing and thawing.

Applications Tested

Peptide ELISA: antibody detection limit dilution 1:64000.

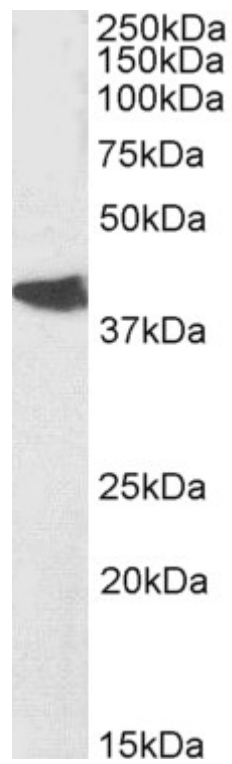
Western blot: Approx 40kDa band observed in Rat Brain lysates (calculated MW of 40.5kDa according to NP_001099864.1). Recommended concentration: 0.01-0.1µg/ml. Primary incubation was 1 hour. Preliminary testing was unsuccessful on Mouse Brain for this particular batch.

IHC: Paraffin embedded Human Placenta and Brain (Cortex). Recommended concentration: 3.75µg/ml.

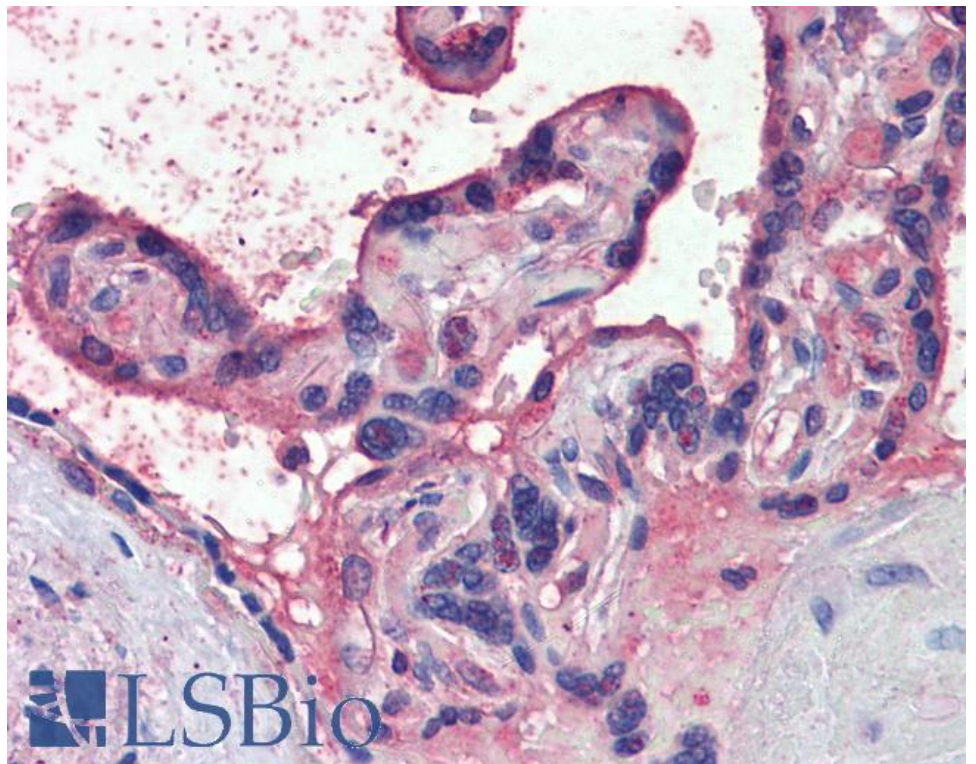
Species Reactivity

Tested: Human, Rat

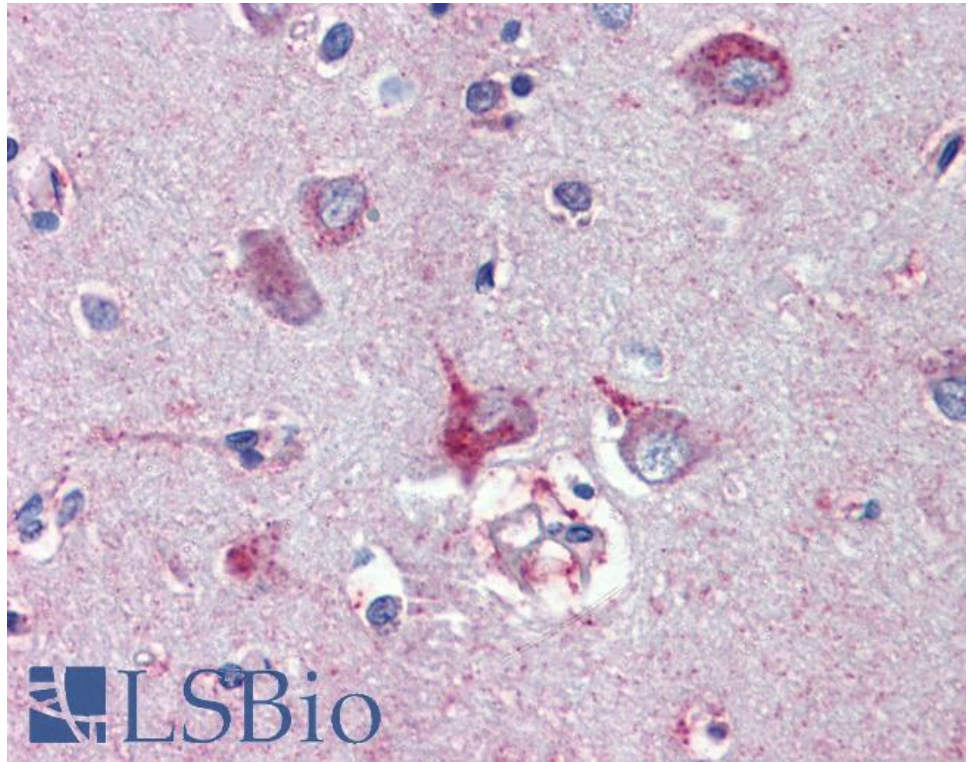
Expected from sequence similarity: Human, Mouse, Rat



EB08091 (0.03 μ g/ml) staining of Rat Brain lysate (35 μ g protein in RIPA buffer). Detected by chemiluminescence.



EB08091 (3.75 μ g/ml) staining of paraffin embedded Human Placenta. Steamed antigen retrieval with citrate buffer pH 6, AP-staining.



EB08091 (3.75µg/ml) staining of paraffin embedded Human Cortex. Steamed antigen retrieval with citrate buffer pH 6, AP-staining.