



## UK Office

### Everest Biotech Ltd

Cherwell Innovation Centre  
77 Heyford Park  
Upper Heyford  
Oxfordshire  
OX25 5HD  
UK

Enquiries:

[info@everestbiotech.com](mailto:info@everestbiotech.com)

Sales:

[sales@everestbiotech.com](mailto:sales@everestbiotech.com)

Tech support:

[support@everestbiotech.com](mailto:support@everestbiotech.com)

Tel: +44 (0)1869 238326

[www.everestbiotech.com](http://www.everestbiotech.com)

**Research Use Only. Not for  
diagnostic or therapeutic use.**

## EB08091 - Goat Anti-NODAL Antibody

Size: 100µg specific antibody in 200µl



### Target Protein

**Principal Names:** NODAL, nodal growth differentiation factor, HTX5, ,

**Official Symbol:** NODAL

**Accession Number(s):** NP\_060525.2

**Human GeneID(s):** [4838](#)

### Immunogen

Peptide with sequence DRSQLCRKVKFQ, from the internal region of the protein sequence according to NP\_060525.2.

Please note the [peptide](#) is available for sale.

### Purification and Storage

Purified from goat serum by ammonium sulphate precipitation followed by antigen affinity chromatography using the immunizing peptide.

Supplied at 0.5 mg/ml in Tris saline, 0.02% sodium azide, pH7.3 with 0.5% bovine serum albumin.

Aliquot and store at -20°C. Minimize freezing and thawing.

### Applications Tested

**Peptide ELISA:** antibody detection limit dilution 1:64000.

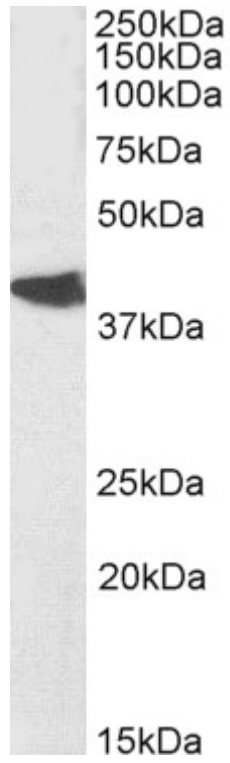
**Western blot:** Approx 40kDa band observed in Rat Brain lysates (calculated MW of 40.5kDa according to NP\_001099864.1 ). Recommended concentration: 0.01-0.1µg/ml. Primary incubation was 1 hour. Preliminary testing was unsuccessful on Mouse Brain for this particular batch.

**IHC:** Paraffin embedded Human Placenta and Brain (Cortex). Recommended concentration: 3.75µg/ml.

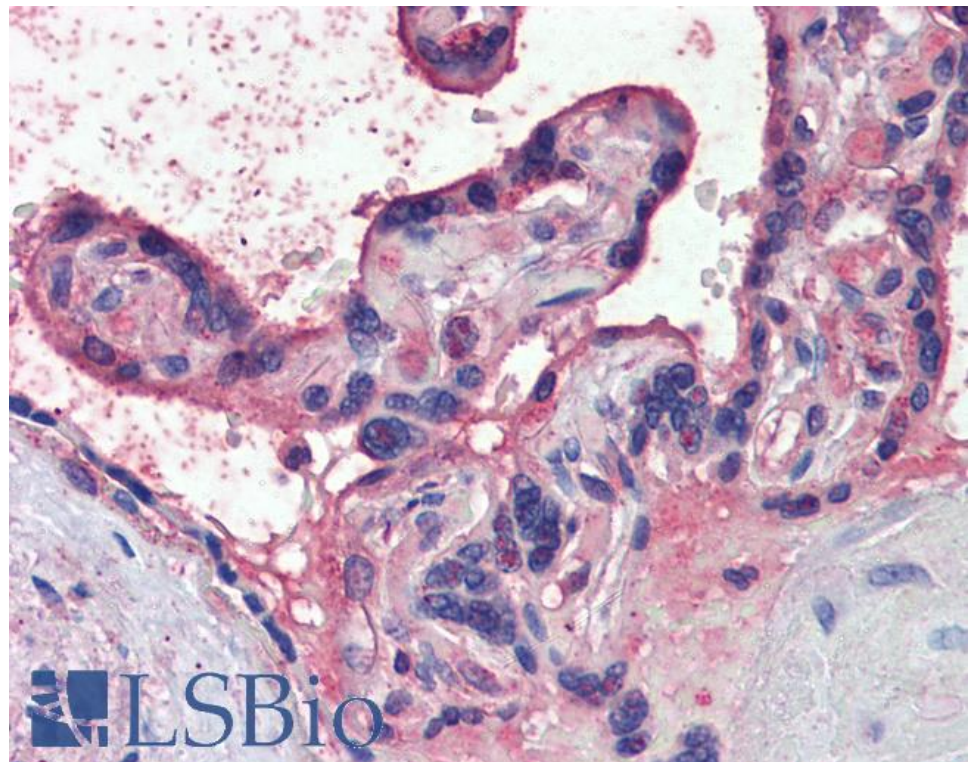
### Species Reactivity

**Tested:** Human, Rat

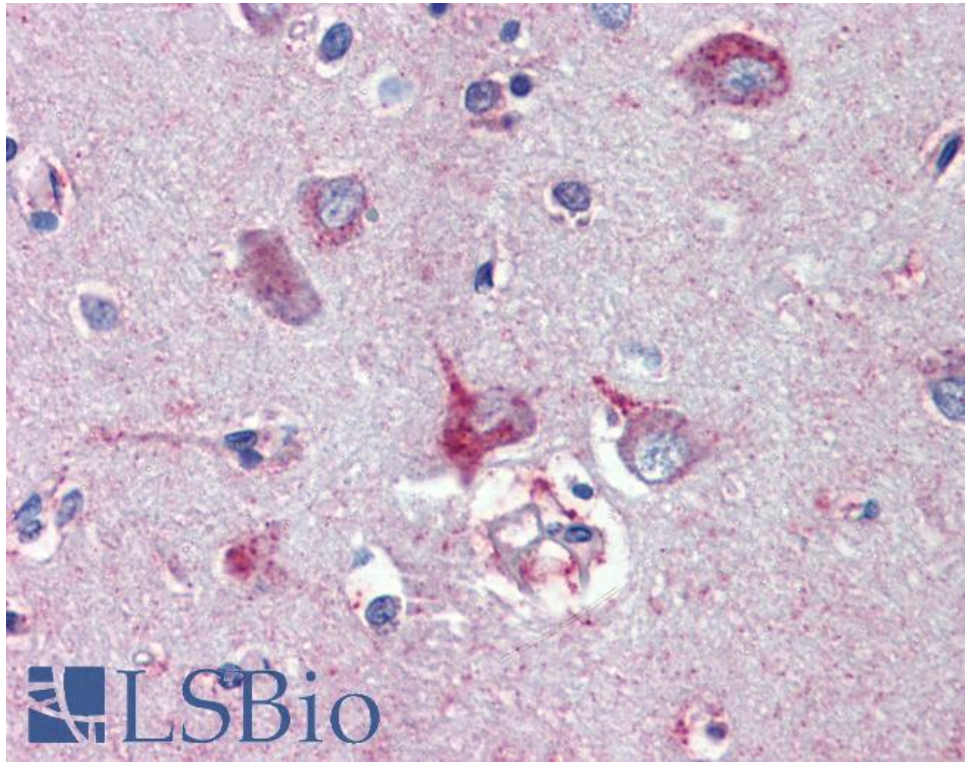
**Expected from sequence similarity:** Human, Mouse, Rat



EB08091 (0.03 $\mu$ g/ml) staining of Rat Brain lysate (35 $\mu$ g protein in RIPA buffer). Detected by chemiluminescence.



EB08091 (3.75 $\mu$ g/ml) staining of paraffin embedded Human Placenta. Steamed antigen retrieval with citrate buffer pH 6, AP-staining.



EB08091 (3.75 $\mu$ g/ml) staining of paraffin embedded Human Cortex. Steamed antigen retrieval with citrate buffer pH 6, AP-staining.