

## UK Office

### Everest Biotech Ltd

Cherwell Innovation Centre  
77 Heyford Park  
Upper Heyford  
Oxfordshire  
OX25 5HD  
UK

Enquiries:

[info@everestbiotech.com](mailto:info@everestbiotech.com)

Sales:

[sales@everestbiotech.com](mailto:sales@everestbiotech.com)

Tech support:

[support@everestbiotech.com](mailto:support@everestbiotech.com)

Tel: +44 (0)1869 238326

[www.everestbiotech.com](http://www.everestbiotech.com)

**Research Use Only. Not for  
diagnostic or therapeutic use.**

## EB10343 - Goat Anti-NOLC1 Antibody

Size: 100µg specific antibody in 200µl



### Target Protein

**Principal Names:** HCV NS5A trans-regulated protein 13, KIAA0035, NOPP130, NOPP140, NS5ATP13, nucleolar and coiled-body phosphoprotein 1, nucleolar and coiled-body phosphoprotein 1, nucleolar phosphoprotein p130, nucleolar protein p130, P130, NOLC1

**Official Symbol:** NOLC1

**Accession Number(s):** NP\_004732.2

**Human GeneID(s):** [9221](#)

**Non-Human GeneID(s):** 70769 (mouse), 64896 (rat)

### Immunogen

Peptide with sequence C-QVNSIKFDSE, from the internal region of the protein sequence according to NP\_004732.2.

Please note the [peptide](#) is available for sale.

### Purification and Storage

Purified from goat serum by ammonium sulphate precipitation followed by antigen affinity chromatography using the immunizing peptide.

Supplied at 0.5 mg/ml in Tris saline, 0.02% sodium azide, pH7.3 with 0.5% bovine serum albumin.

Aliquot and store at -20°C. Minimize freezing and thawing.

### Applications Tested

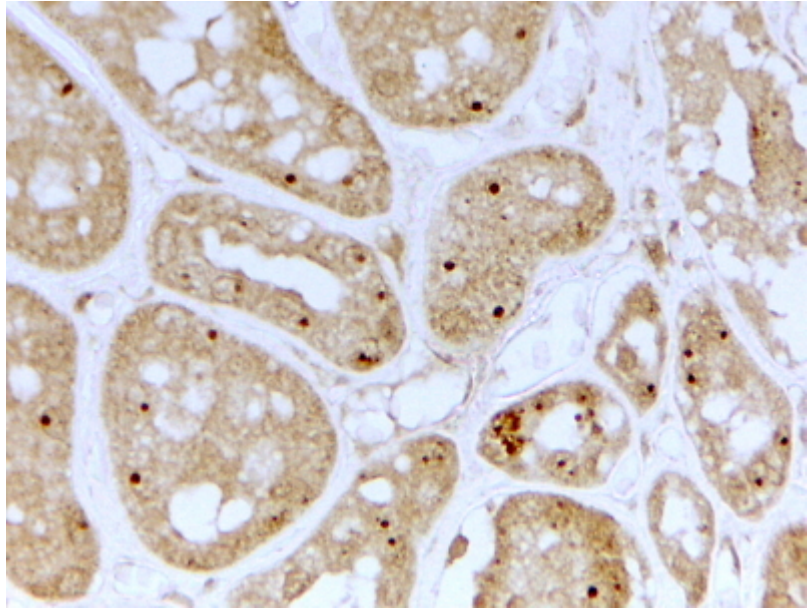
**Peptide ELISA:** antibody detection limit dilution 1:16000.

**IHC:** In paraffin embedded Human Kidney shows strong nucleolar staining in convoluted tubules. Recommended concentration, 2-4µg/ml.

### Species Reactivity

**Tested:** Human

**Expected from sequence similarity:** Human, Mouse, Rat, Dog, Cow



EB10343 (2 $\mu$ g/ml) staining of paraffin embedded Human Kidney. Steamed antigen retrieval with citrate buffer pH 6, HRP-staining.