



International Office

Everest Biotech Ltd

Vector Laboratories, Inc.
6737 Mowry Ave
Newark, CA 94560
United States

Customer Service:

customerservice@vectorlabs.com

Technical Service:

technical@vectorlabs.com

Tel: +1 (800) 227-6666

www.everestbiotech.com

**Research Use Only. Not for
diagnostic or therapeutic use.**

EB10784 - Goat Anti-NOTCH1 (aa171-182) Antibody

Size: 100µg specific antibody in 200µl



Target Protein

Principal Names: NOTCH1, notch 1, TAN1, hN1, Notch homolog 1, translocation-associated, neurogenic locus notch homolog protein 1, translocation-associated notch protein TAN-1

Official Symbol: NOTCH1

Accession Number(s): NP_060087.3

Human GeneID(s): [4851](#)

Non-Human GeneID(s): 18128 (mouse), 25496 (rat)

Immunogen

Peptide with sequence HGPTCRQDVNEC, from the N Terminus (near) of the protein sequence according to NP_060087.3.

Please note the [peptide](#) is available for sale.

Purification and Storage

Purified from goat serum by ammonium sulphate precipitation followed by antigen affinity chromatography using the immunizing peptide.

Supplied at 0.5 mg/ml in Tris saline, 0.02% sodium azide, pH7.3 with 0.5% bovine serum albumin.

Aliquot and store at -20°C. Minimize freezing and thawing.

Applications Tested

Peptide ELISA: antibody detection limit dilution 1:8000.

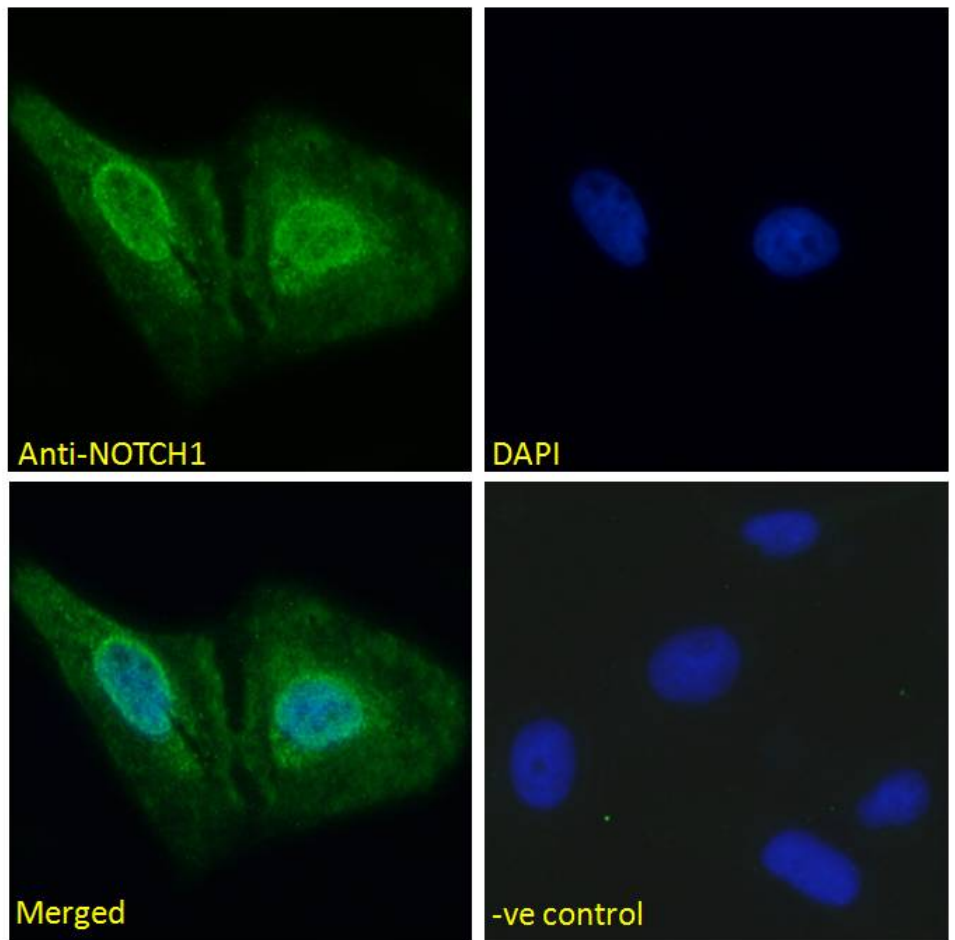
IHC: Paraffin embedded Human Thyroid. Recommended concentration: 5µg/ml.

Immunofluorescence: Strong expression of the protein seen in the nucleus of U2OS cells. Recommended concentration: 5µg/ml.

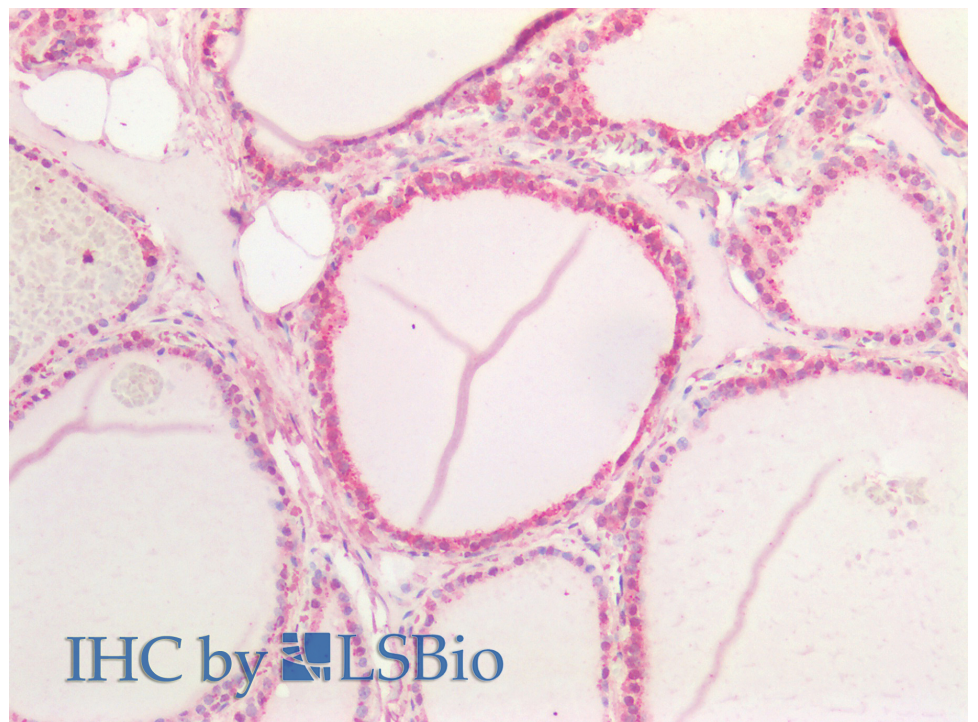
Species Reactivity

Tested: Human

Expected from sequence similarity: Human, Mouse, Rat, Dog, Cow



EB10784 Immunofluorescence analysis of paraformaldehyde fixed U2OS cells, permeabilized with 0.15% Triton. Primary incubation 1hr (5ug/ml) followed by Alexa Fluor 488 secondary antibody (2ug/ml), showing nuclear staining. The nuclear stain is DAPI (blue). Negative control: Unimmunized goat IgG (5ug/ml) followed by Alexa Fluor 488 secondary antibody (2ug/ml).



EB10784 (5µg/ml) staining of paraffin embedded Human Thyroid. Steamed antigen retrieval with citrate buffer pH 6, AP-staining.