

## International Office

### Everest Biotech Ltd

Vector Laboratories, Inc.  
6737 Mowry Ave  
Newark, CA 94560  
United States

Customer Service:

[customerservice@vectorlabs.com](mailto:customerservice@vectorlabs.com)

Technical Service:

[technical@vectorlabs.com](mailto:technical@vectorlabs.com)

Tel: +1 (800) 227-6666

[www.everestbiotech.com](http://www.everestbiotech.com)

**Research Use Only. Not for  
diagnostic or therapeutic use.**

## EB07441 - Goat Anti-NOTCH1 Antibody

Size: 100µg specific antibody in 200µl



### Target Protein

**Principal Names:** NOTCH1, Notch homolog 1, translocation-associated (Drosophila), TAN1, hN1, Notch (Drosophila) homolog 1 (translocation-associated), neurogenic locus notch homolog protein 1, notch1, translocation-associated notch protein TAN-1

**Official Symbol:** NOTCH1

**Accession Number(s):** NP\_060087.2

**Human GeneID(s):** [4851](#)

### Immunogen

Peptide with sequence C-DLKARRKKSQDGK, from the internal region of the protein sequence according to NP\_060087.2.

Please note the [peptide](#) is available for sale.

### Purification and Storage

Purified from goat serum by ammonium sulphate precipitation followed by antigen affinity chromatography using the immunizing peptide.

Supplied at 0.5 mg/ml in Tris saline, 0.02% sodium azide, pH7.3 with 0.5% bovine serum albumin.

Aliquot and store at -20°C. Minimize freezing and thawing.

### Applications Tested

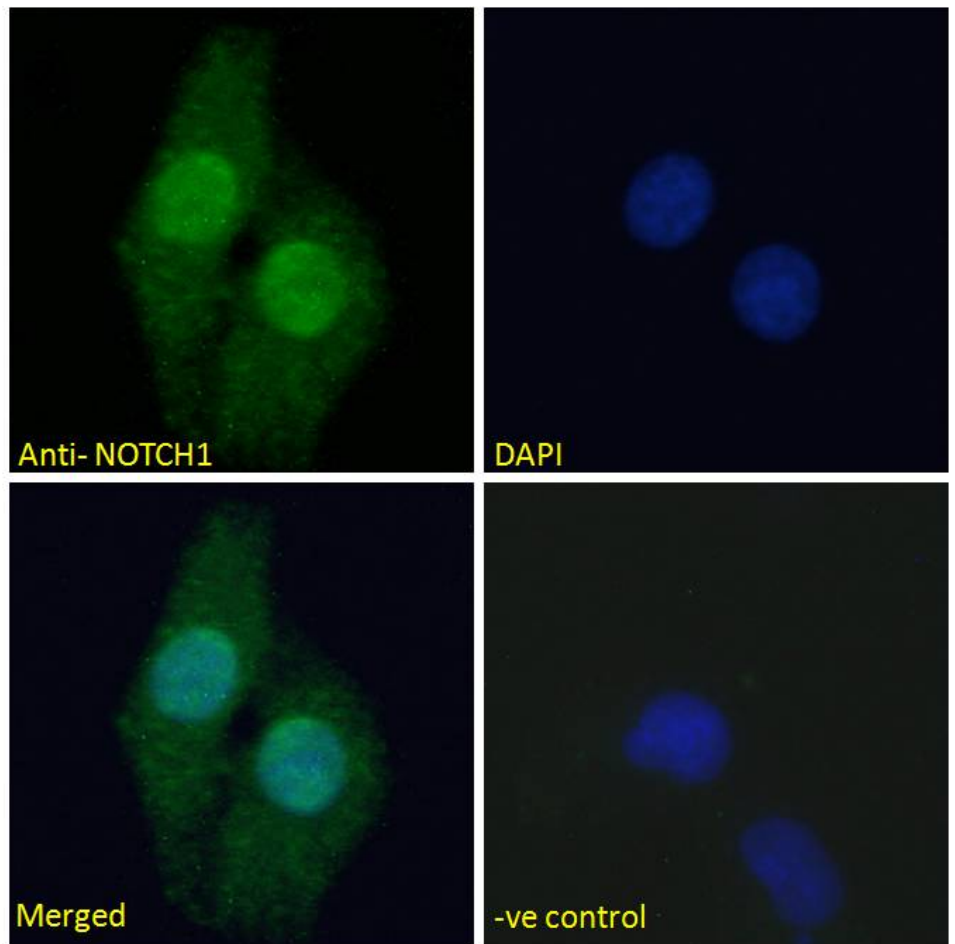
**Peptide ELISA:** antibody detection limit dilution 1:64000.

**Immunofluorescence:** Strong expression of the protein seen in the nucleus of U2OS cells. Recommended concentration: 5µg/ml.

### Species Reactivity

**Tested:** Human

**Expected from sequence similarity:** Human



EB07441 Immunofluorescence analysis of paraformaldehyde fixed U2OS cells, permeabilized with 0.15% Triton. Primary incubation 1hr (5ug/ml) followed by Alexa Fluor 488 secondary antibody (2ug/ml), showing nuclear staining. The nuclear stain is DAPI (blue). Negative control: Unimmunized goat IgG (5ug/ml) followed by Alexa Fluor 488 secondary antibody (2ug/ml).