



International Office

Everest Biotech Ltd

Vector Laboratories, Inc.
6737 Mowry Ave
Newark, CA 94560
United States

Customer Service:

customerservice@vectorlabs.com

Technical Service:

technical@vectorlabs.com

Tel: +1 (800) 227-6666

www.everestbiotech.com

**Research Use Only. Not for
diagnostic or therapeutic use.**

EB07031 - Goat Anti-NOTCH3 Antibody

Size: 100µg specific antibody in 200µl



Target Protein

Principal Names: NOTCH3, Notch homolog 3 (Drosophila), HGNC:7883, CADASIL, CASIL, Notch (Drosophila) homolog 3, Notch homolog 3

Official Symbol: NOTCH3

Accession Number(s): NP_000426.2

Human GeneID(s): [4854](#)

Immunogen

Peptide with sequence C-QLGPQPEVTPKRQ, from the C Terminus of the protein sequence according to NP_000426.2.

Please note the [peptide](#) is available for sale.

Purification and Storage

Purified from goat serum by ammonium sulphate precipitation followed by antigen affinity chromatography using the immunizing peptide.

Supplied at 0.5 mg/ml in Tris saline, 0.02% sodium azide, pH7.3 with 0.5% bovine serum albumin.

Aliquot and store at -20°C. Minimize freezing and thawing.

Applications Tested

Peptide ELISA: antibody detection limit dilution 1:16000.

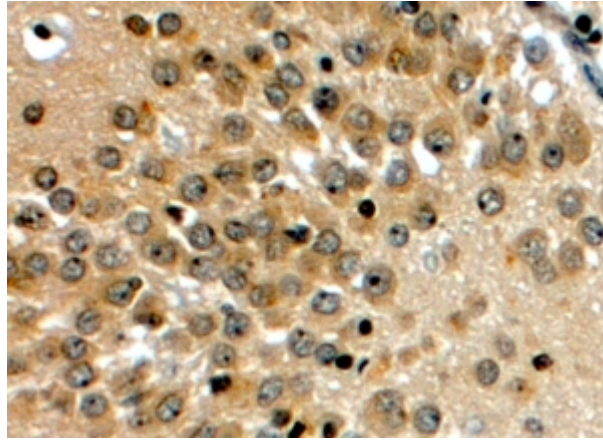
IHC: In paraffin embedded Human Hippocampus shows select nuclear staining and weaker staining in different compartments of the neuronal cell bodies. Recommended concentration: 4-6µg/ml. Paraffin embedded Human Placenta. Recommended concentration: 5µg/ml.

Flow Cytometry: Flow cytometric analysis of HeLa cells. Recommended concentration: 10ug/ml.

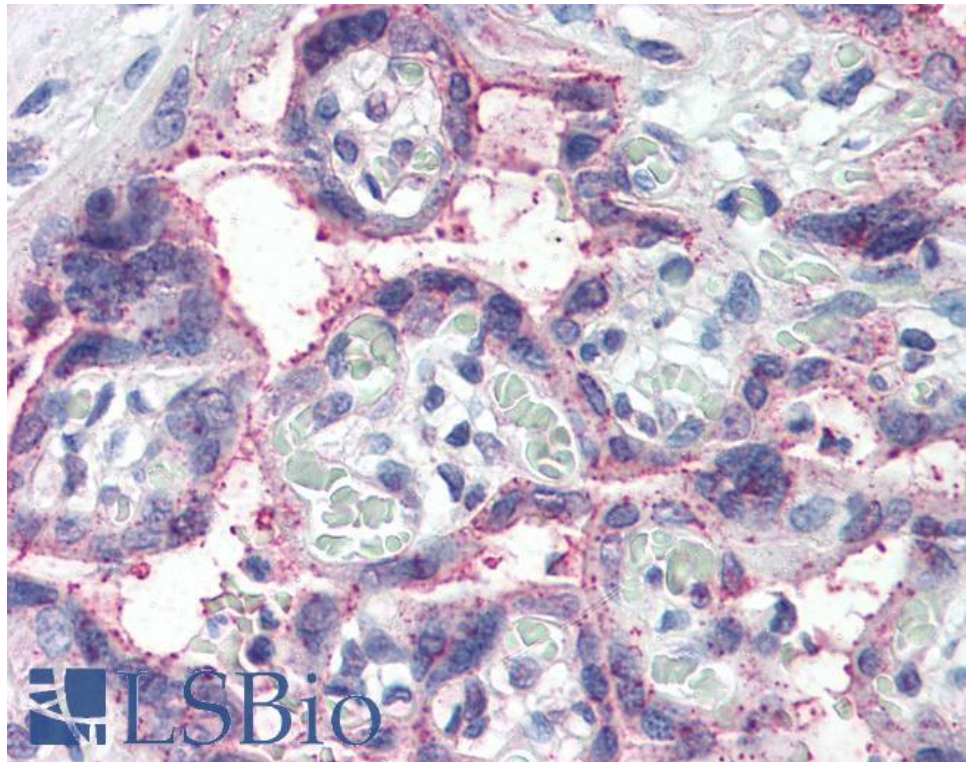
Species Reactivity

Tested: Human

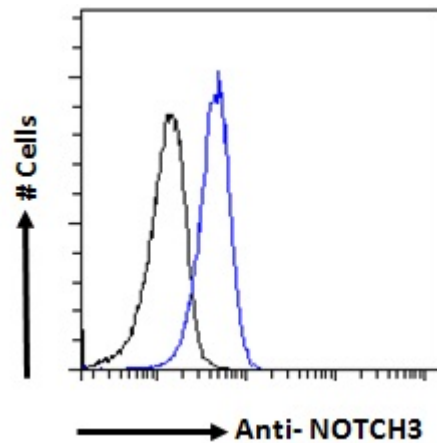
Expected from sequence similarity: Human, Mouse, Rat



EB07031 (4µg/ml) staining of paraffin embedded Human Hippocampus. Steamed antigen retrieval with citrate buffer pH 6, HRP-staining.



EB07031 (5µg/ml) staining of paraffin embedded Human Placenta. Steamed antigen retrieval with citrate buffer Ph 6, AP-staining.



EB07031 Flow cytometric analysis of paraformaldehyde fixed HeLa cells (blue line), permeabilized with 0.5% Triton. Primary incubation 1hr (10ug/ml) followed by Alexa Fluor 488 secondary antibody (1ug/ml). IgG control: Unimmunized goat IgG (black line) followed by Alexa Fluor 488 secondary antibody.