



## UK Office

### Everest Biotech Ltd

Cherwell Innovation Centre  
77 Heyford Park  
Upper Heyford  
Oxfordshire  
OX25 5HD  
UK

Enquiries:

[info@everestbiotech.com](mailto:info@everestbiotech.com)

Sales:

[sales@everestbiotech.com](mailto:sales@everestbiotech.com)

Tech support:

[support@everestbiotech.com](mailto:support@everestbiotech.com)

Tel: +44 (0)1869 238326

[www.everestbiotech.com](http://www.everestbiotech.com)

**Research Use Only. Not for  
diagnostic or therapeutic use.**

## EB10786 - Goat Anti-NOTCH4 (aa1261-1273) Antibody

Size: 100µg specific antibody in 200µl



### Target Protein

**Principal Names:** NOTCH4, DAQB-143M3.4, FLJ16302, INT3, MGC74442, NOTCH3, Notch homolog 4, neurogenic locus notch homolog protein 4

**Official Symbol:** NOTCH4

**Accession Number(s):** NP\_004548.3

**Human GeneID(s):** [4855](#)

**Non-Human GeneID(s):** 18132 (mouse), 406162 (rat)

**Important Comments:** The immunizing peptide represents part of the extracellular domain.

### Immunogen

Peptide with sequence DHFHNGHCEKGCNN, from the internal region of the protein sequence according to NP\_004548.3.

Please note the [peptide](#) is available for sale.

### Purification and Storage

Purified from goat serum by ammonium sulphate precipitation followed by antigen affinity chromatography using the immunizing peptide.

Supplied at 0.5 mg/ml in Tris saline, 0.02% sodium azide, pH7.3 with 0.5% bovine serum albumin.

Aliquot and store at -20°C. Minimize freezing and thawing.

### Applications Tested

**Peptide ELISA:** antibody detection limit dilution 1:8000.

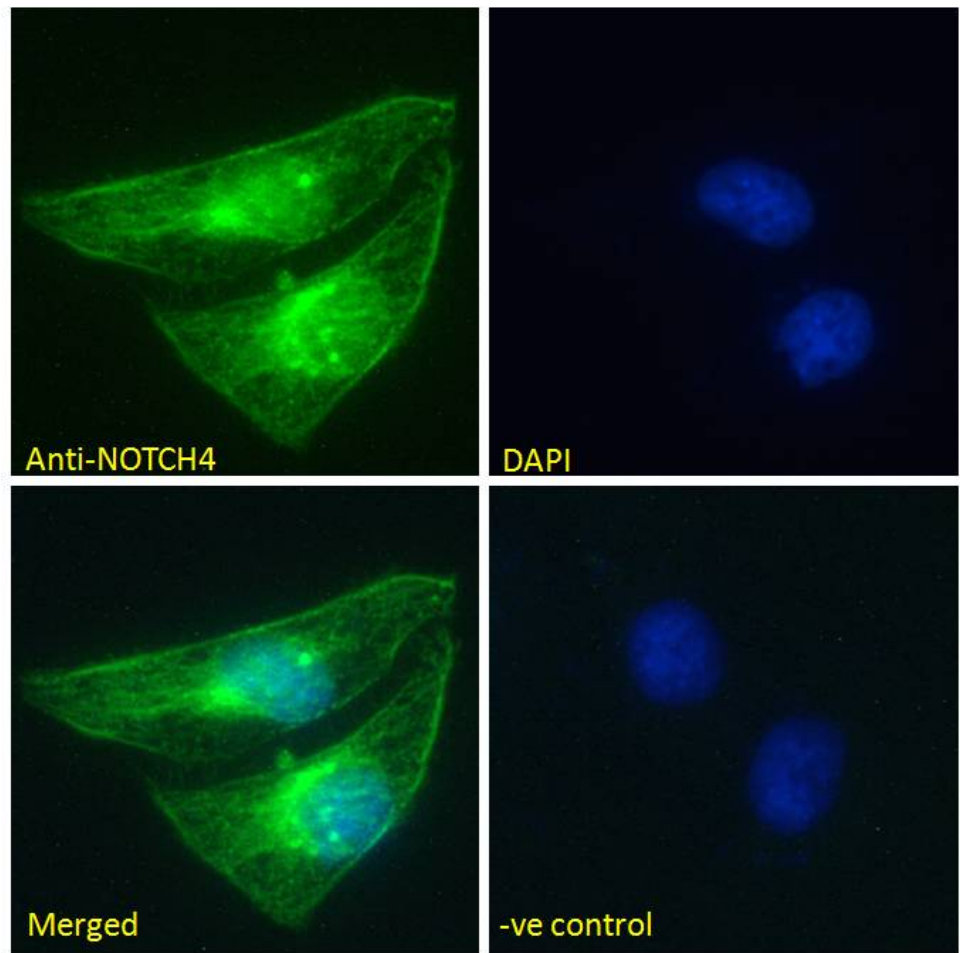
**Western blot:** Preliminary experiments gave an approx 27kDa band in all human, mouse and rat tissue and cell line lysates tested after 1µg/ml antibody staining. Please note that currently we cannot find an explanation in the literature for the band we observe given the calculated size of 210kDa according to NP\_004548.3. The 27kDa band was successfully blocked by incubation with the immunizing peptide.

**Immunofluorescence:** Strong expression of the protein seen in the nuclei and membranes of HeLa cells, and in the membranes of NIH3T3 cells. Recommended concentration: 10µg/ml.

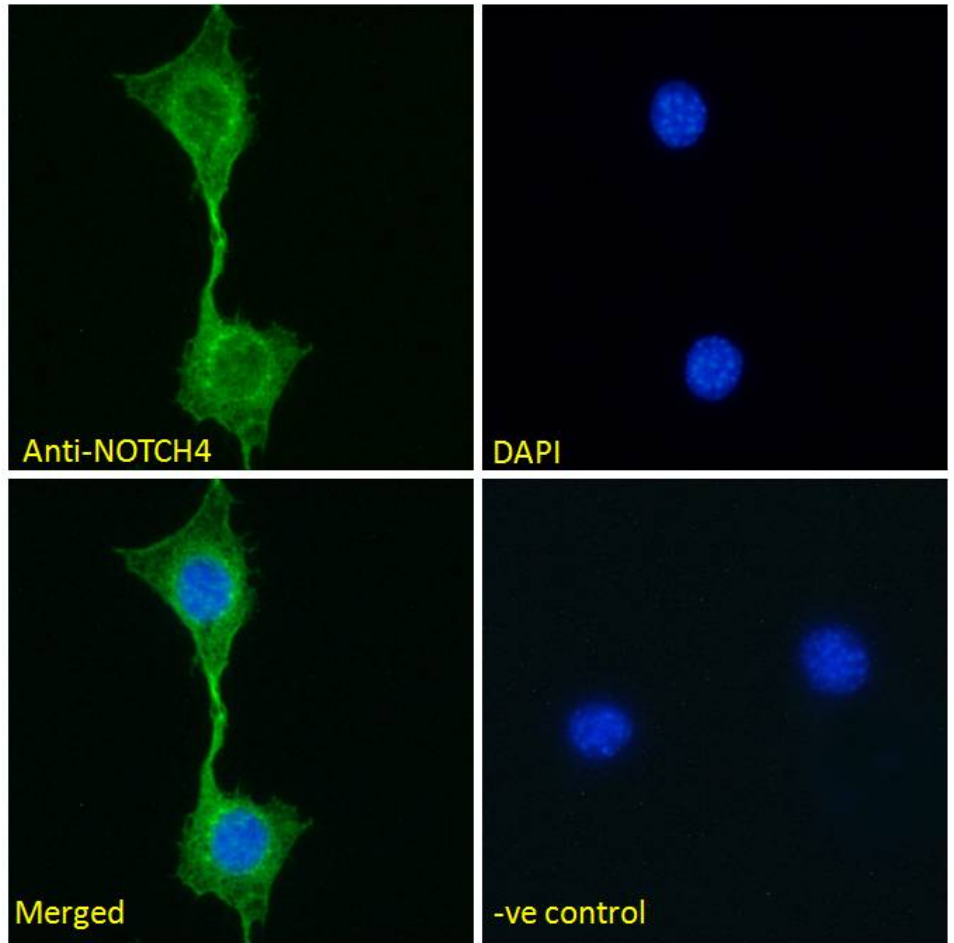
### Species Reactivity

**Tested:** Human, Mouse

**Expected from sequence similarity:** Human, Mouse, Rat, Dog, Pig, Cow



EB10786 Immunofluorescence analysis of paraformaldehyde fixed HeLa cells, permeabilized with 0.15% Triton. Primary incubation 1hr (10ug/ml) followed by Alexa Fluor 488 secondary antibody (2ug/ml), showing membrane and nuclear staining. The nuclear stain is DAPI (blue). Negative control: Unimmunized goat IgG (10ug/ml) followed by Alexa Fluor 488 secondary antibody (2ug/ml).



EB10786 Immunofluorescence analysis of paraformaldehyde fixed NIH3T3 cells, permeabilized with 0.15% Triton. Primary incubation 1hr (10ug/ml) followed by Alexa Fluor 488 secondary antibody (2ug/ml), showing membrane staining. The nuclear stain is DAPI (blue). Negative control: Unimmunized goat IgG (10ug/ml) followed by Alexa Fluor 488 secondary antibody (2ug/ml).