



## UK Office

### Everest Biotech Ltd

Cherwell Innovation Centre  
77 Heyford Park  
Upper Heyford  
Oxfordshire  
OX25 5HD  
UK

Enquiries:

[info@everestbiotech.com](mailto:info@everestbiotech.com)

Sales:

[sales@everestbiotech.com](mailto:sales@everestbiotech.com)

Tech support:

[support@everestbiotech.com](mailto:support@everestbiotech.com)

Tel: +44 (0)1869 238326

Fax: +44 (0)1869 238327

## US Office

### Everest Biotech c/o Abcore

405 Maple Street, Suite A106  
Ramona,  
CA 92065  
USA

Inquiries:

[info@everestbiotech.com](mailto:info@everestbiotech.com)

Sales:

[usasales@everestbiotech.com](mailto:usasales@everestbiotech.com)

Tech support:

[support@everestbiotech.com](mailto:support@everestbiotech.com)

Tel: 888-320-4628 (toll-free)

Fax: 888-841-9041

[www.everestbiotech.com](http://www.everestbiotech.com)

**Research Use Only. Not for  
diagnostic or therapeutic use.**

## EB08387 - Goat Anti-NOVA1 Antibody

Size: 100µg specific antibody in 200µl



### Target Protein

**Principal Names:** NOVA1, neuro-oncological ventral antigen 1, Nova-1, paraneoplastic Ri antigen, ventral neuron-specific protein 1

**Official Symbol:** NOVA1

**Accession Number(s):** NP\_002506.2 ; NP\_006480.2 ; NP\_006482.1

**Human GeneID(s):** [4857](#)

**Important Comments:** This antibody is expected to recognise all three reported isoforms (NP\_002506.2 ; NP\_006480.2 ; NP\_006482.1)

### Immunogen

Peptide with sequence C-REMPQNVAKTEPVS, from the internal region of the protein sequence according to NP\_002506.2 ; NP\_006480.2 ; NP\_006482.1.

Please note the [peptide](#) is available for sale.

### Purification and Storage

Purified from goat serum by ammonium sulphate precipitation followed by antigen affinity chromatography using the immunizing peptide.

Supplied at 0.5 mg/ml in Tris saline, 0.02% sodium azide, pH7.3 with 0.5% bovine serum albumin.

Aliquot and store at -20°C. Minimize freezing and thawing.

### Applications Tested

**Peptide ELISA:** antibody detection limit dilution 1:64000.

**Western blot:** Approx 50-55kDa band observed in Human Breast Cancer lysates (calculated MW of 51.7kDa according to NP\_002506.2). In transfected HEK293 transiently expressing NOVA1 a band of approx. 52kDa is observed. This band is not observed in the non-transfected HEK293. Recommended concentration: 0.01-0.03µg/ml. Primary incubation was 1 hour.

**IHC:** Paraffin embedded Human Brain (Cortex) and Heart. Recommended concentration: 5µg/ml.

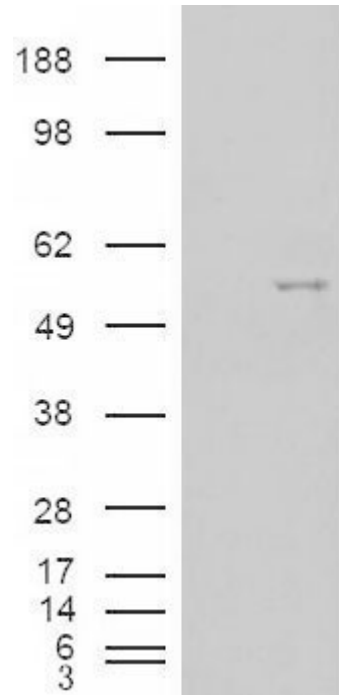
### Species Reactivity

**Tested:** Human

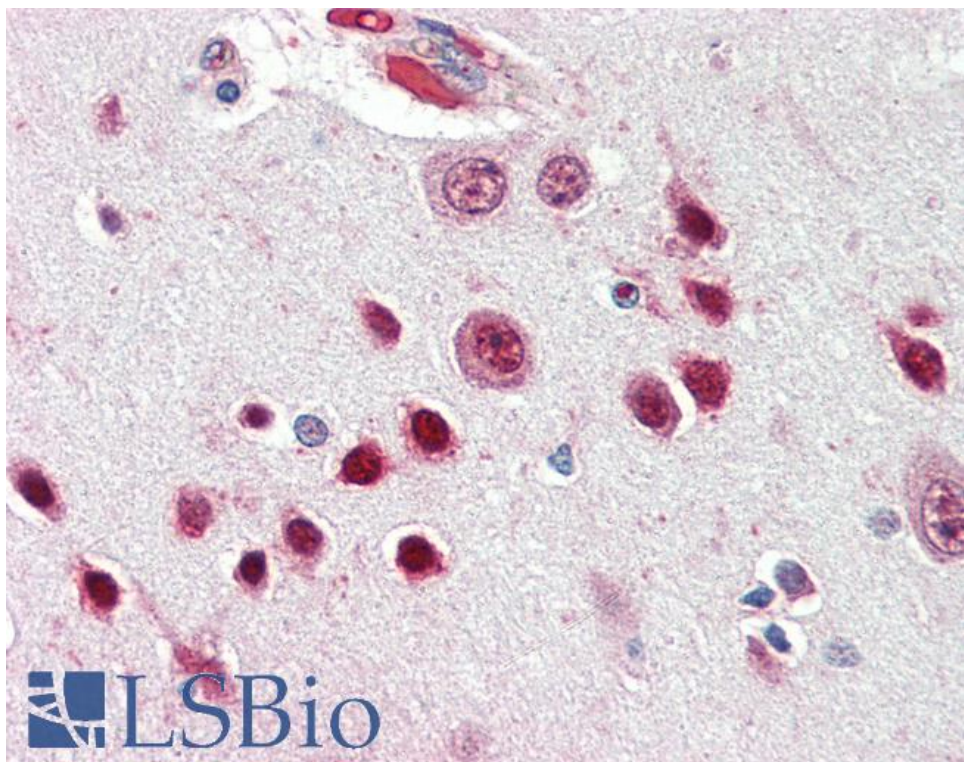
**Expected from sequence similarity:** Human



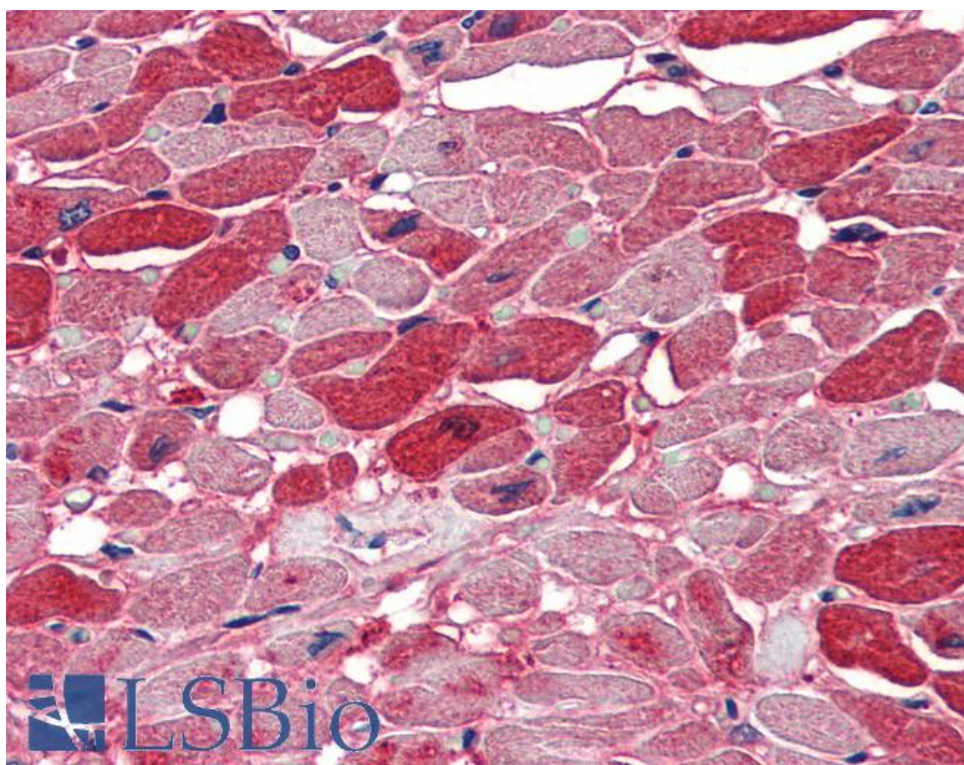
EB08387 (0.01 $\mu$ g/ml) staining of Human Breast Cancer lysate (35 $\mu$ g protein in RIPA buffer). Detected by chemiluminescence.



HEK293 overexpressing NOVA1 (RC210407) and probed with EB08387 (mock transfection in first lane), tested by Origene.



EB08387 (5µg/ml) staining of paraffin embedded Human Cortex. Steamed antigen retrieval with citrate buffer pH 6, AP-staining.



EB08387 (5µg/ml) staining of paraffin embedded Human Heart. Steamed antigen retrieval with citrate buffer pH 6, AP-staining.