

## International Office

### Everest Biotech Ltd

Vector Laboratories, Inc.  
6737 Mowry Ave  
Newark, CA 94560  
United States

Customer Service:

[customerservice@vectorlabs.com](mailto:customerservice@vectorlabs.com)

Technical Service:

[technical@vectorlabs.com](mailto:technical@vectorlabs.com)

Tel: +1 (800) 227-6666

[www.everestbiotech.com](http://www.everestbiotech.com)

**Research Use Only. Not for  
diagnostic or therapeutic use.**

## EB10578 - Goat Anti-NOX1 Antibody

Size: 100µg specific antibody in 200µl



### Target Protein

**Principal Names:** NOX1, NADPH oxidase 1, GP91-2, MOX1, NOH-1, NOH1, MOX-1, NADH/NADPH mitogenic oxidase subunit P65-MOX, NADPH oxidase 1 variant NOH-1L, NADPH oxidase homolog-1, NOX-1, mitogenic oxidase (pyridine nucleotide-dependent superoxide-generating), mitogenic oxidase 1

**Official Symbol:** NOX1

**Accession Number(s):** NP\_008983.2; NP\_39249.1

**Human GeneID(s):** [27035](#)

**Non-Human GeneID(s):** 237038 (mouse)

**Important Comments:** This antibody is expected to recognize both reported isoforms (NP\_008983.2; NP\_39249.1).

### Immunogen

Peptide with sequence C-DKATDIVTGLKQK, from the internal region of the protein sequence according to NP\_008983.2; NP\_39249.1.

Please note the [peptide](#) is available for sale.

### Purification and Storage

Purified from goat serum by ammonium sulphate precipitation followed by antigen affinity chromatography using the immunizing peptide.

Supplied at 0.5 mg/ml in Tris saline, 0.02% sodium azide, pH7.3 with 0.5% bovine serum albumin.

Aliquot and store at -20°C. Minimize freezing and thawing.

### Applications Tested

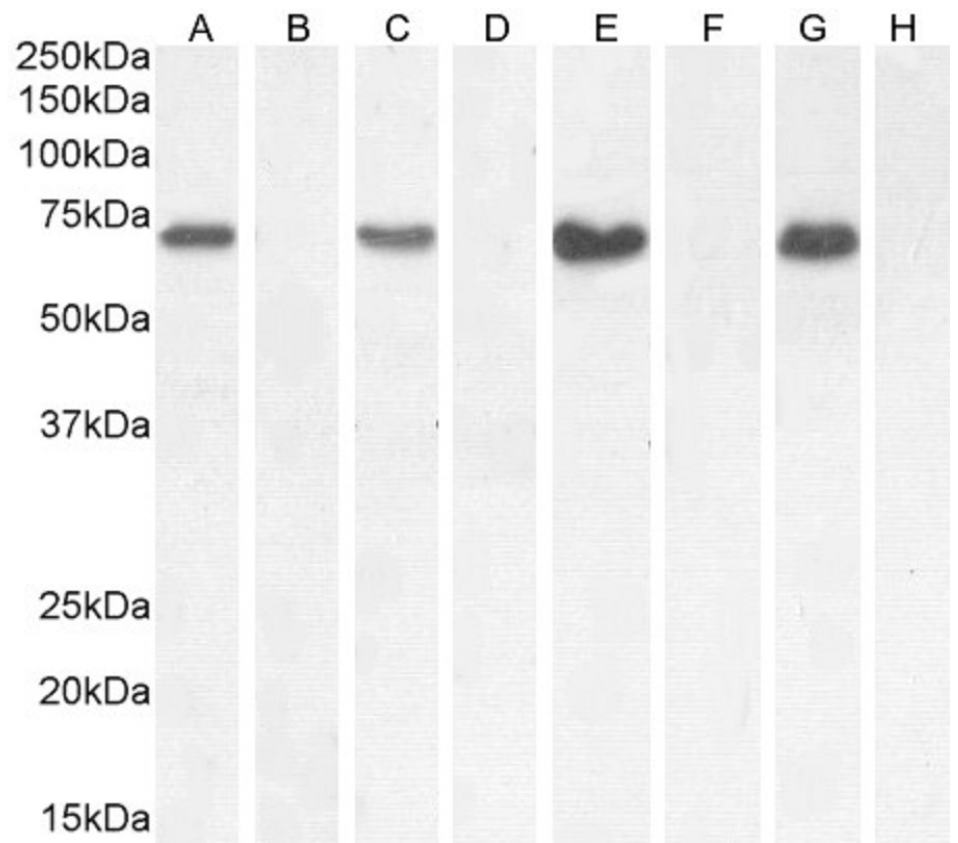
**Peptide ELISA:** antibody detection limit dilution 1:32000.

**Western blot:** Approx 70-72kDa band observed in lysates of cell lines A549, CaCo-2, HeLa and U937, (calculated MW of 64.9kDa according to NP\_008983.2;). This molecular weight is routinely observed by other sources and was successfully blocked by incubation with the immunising peptide. Recommended concentration: 0.3-1ug/ml. Primary incubation 1 hour at room temperature.

### Species Reactivity

**Tested:** Human

**Expected from sequence similarity:** Human



EB10578 (0.5µg/ml) staining of CaCo-2 (A) + peptide (B), HeLa (C) + peptide (D), A549 (E) + peptide (F) and U937 (G) + peptide (H) cell lysate (35µg protein in RIPA buffer). Detected by chemiluminescence.